

# CAPP Rondo

## PLATFORM SHAKER



The CAPP Rondo Platform Shaker offers efficient mixing with a durable, maintenance-free design for extended use.

### Features

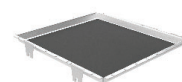
- Offers multiple programmable modes, such as motion direction, speed, time, dwell time, sequence and loop operation
- Different optional attachment platforms and clamps make it possible to use almost all shapes and sizes of vessels
- The Auto Power On option ensures operation continues for the remaining time after a power failure

### Specifications

<b>Speed</b>	50-300 RPM	<b>Platform Size</b>	330 x 330 mm
<b>Orbital Diameter</b>	20 mm	<b>Protection Class</b>	IP 21
<b>Motion</b>	Orbital/Linear	<b>Programmable Features</b>	Up to 6 programs, each with 9 sub-programs
<b>Motor Type</b>	Brushless DC motor	<b>Programmable Looping</b>	Yes
<b>Max. Loading Capacity</b>	7.5kg (with attachment)	<b>Dimensions (W x D x H)</b>	408 x 350 x 99 mm
<b>Time Setting</b>	1 min to 99 hours and 59 mins	<b>Weight</b>	10 kg
<b>Noise Level</b>	< 60 dB	<b>Power Consumption</b>	24 W
<b>Digital Display</b>	Yes		



CRP-U



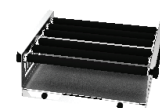
CRP-D



CRP-C9-250



CRP-C9-500



CRP-F



CRP-CS9-250



CRP-CS9-500



CRP-CS-250

## Ordering Information

Cat. No.	Description
CRP-3X	CAPPRondo Platform Shaker ø 20 mm
CRP-U	Universal Platform with Adjustable Bars (Flask capacity 9 x 250 mL, 6 x 500 mL)
CRP-D	Disk Attachment Base Plate with Slip-resistant Tray
CRP-C9-250	Base Plate with 9 Plastic Clamps: 9 x 250 mL
CRP-C9-500	Base Plate with 9 Plastic Clamps: 9 x 500 mL
CRP-F	Funnel Attachment
CRP-CS9-250	Base Plate with 9 Stainless Steel Clamps: 9 x 250 mL
CRP-CS9-500	Base Plate with 9 Stainless Steel Clamps: 9 x 500 mL
CRP-CS-100	Stainless Steel Clamp for 100 mL Flask
CRP-CS-150	Stainless Steel Clamp for 150 mL Flask
CRP-CS-250	Stainless Steel Clamp for 250 mL Flask
CRP-CS-500	Stainless Steel Clamp for 500 mL Flask
CRP-CS-1000	Stainless Steel Clamp for 1000 mL Flask

### Scope of Delivery

- 1 pc. Platform Shaker
- 1 pc. Power Adapter
- 1 pc. Spanner
- 1 pc. User Manual
- 1 pc. Warranty Card