

# CAPP Rondo

## REFRIGERATED CENTRIFUGE

The CAPP Rondo Refrigerated Centrifuge is a high-performance centrifuge for spinning samples in a controlled low-temperature environment of up to  $-20^{\circ}\text{C}$  ( $\pm 4^{\circ}\text{C}$ ). Using this centrifuge, molecular biology samples such as antibodies, DNA, RNA, and PCR, among others, can be processed with ease.

### Features

- Comes with 4 interchangeable rotor options for flexible sample handling and easy customisation
  - Brushless, maintenance-free DC motor runs at high speeds of up to 15000 RPM, delivering a smooth, high-speed performance with no maintenance required
    - Refrigerated benchtop centrifuge maintains a stable temperature throughout the run, even at high speeds, with its built-in refrigeration system
  - Flexible run timer offers exceptional versatility - from 30 seconds to 999 minutes - suitable for many protocols
    - Up to 99 user-defined programs of four lines each
  - Imbalance detection feature and lid lock safety mechanism for secure operation every time
    - Silent operation
- Functions - countdown timer / RPM/RCF speed setting / error display



### Specifications

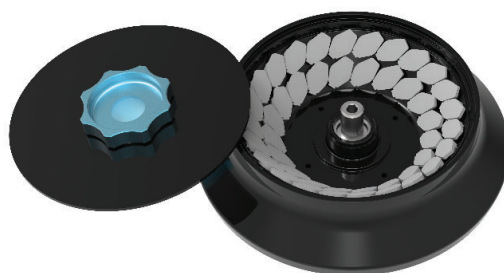
<b>Speed</b>	500-15000 RPM / RCF varies per rotor	<b>Display</b>	Yes, backlit LCD
<b>Speed Accuracy</b>	$\pm 100$ RPM	<b>Time Setting</b>	30 sec. - 999 min.
<b>Motor Type</b>	Brushless DC	<b>Temperature Range</b>	$-20^{\circ}\text{C}$ to $40^{\circ}\text{C}$
<b>Rotor Capacity</b>	24 x 1.5 / 2 ml micro tubes / 44 x 1.5 / 2 ml micro tubes / 8 x 5 ml / 4 PCR strips	<b>Temperature Accuracy</b>	$\pm 1^{\circ}\text{C}$
<b>Imbalance Detection</b>	Yes	<b>Dimensions (W x D x H)</b>	325 x 720 x 305 mm
<b>Noise Level</b>	<60 dB	<b>Weight</b>	43kg

### Scope of Delivery

1 pc. Refrigerated Centrifuge	1 pc. Grease Tube
1 pc. Power Adapter	1 pc. User Manual
Adaptors for 0.4/0.5 mL Tubes	1 pc. Warranty Card
Adaptors for 0.1/0.2 mL Tubes	

**CR-15-44**

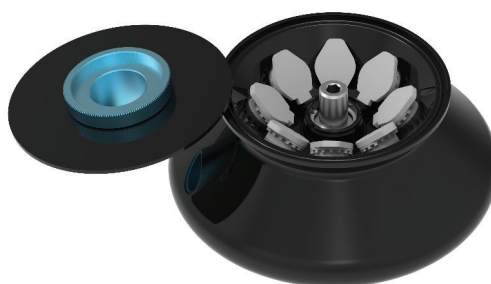
Fixed angle rotor for  
44x 1.5 mL/  
2.0 mL microtubes

**CR-15-24**

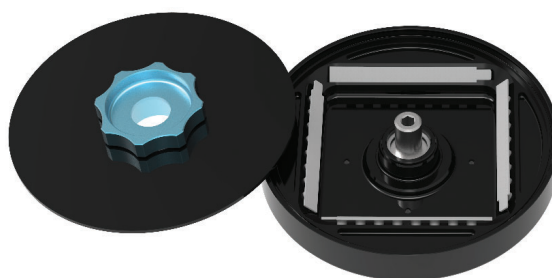
Fixed angle rotor  
for 24x 1.5 mL/  
2.0 mL microtubes

**CR-15-8**

Fixed angle rotor  
for 8x 5.0 mL  
microtubes

**CR-15-4**

Fixed angle rotor  
for 4 strips of 8x 0.2 mL/  
0.5 mL PCR tubes



## Ordering Information

**Cat No. Description**

CR-1544R CAPP Rondo Refrigerated Centrifuge 15000 RPM, 220V

CR-15-44 Fixed angle rotor for 44x 1.5 mL/ 2.0 mL MT, 22388 x g

CR-15-24 Fixed angle rotor for 24x 1.5 mL/ 2.0 mL MT, 21420 x g

CR-15-8 Fixed angle rotor for 8x 5.0 mL MT, 18462 x g

CR-15-4 Fixed angle rotor for 4 strips of 8x 0.2 mL/ 0.5 mL PCR tubes, 15397 x g