

CAPP Rondo

UNIVERSAL CENTRIFUGE



CAPP Rondo Universal Centrifuge has been developed after much research on user feedback and expectations.

Occupying a minimal amount of bench space, it offers powerful and efficient centrifugation while maintaining high performance over a long time of use.

Features

- Wide range of rotor options include both swing-out and fixed-angle rotors for versatile applications
 - Emergency Lid Release provides safe lid opening if power is lost
 - Imbalance detection with auto cutoff feature
- Nine acceleration/deceleration modes allow a smooth start/stop to protect sensitive samples
 - Intelligent airflow system that prevents sample overheating during centrifugation
 - User-friendly interface with a digital display for easy monitoring of multiple parameters
 - Functions – last run memory / countdown timer / quick spin / RPM/RCF speed setting / error display / customised programs

Specifications

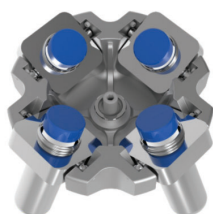
Speed	500 - 4500 RPM / RCF varies per rotor type	Programmable	Yes, up to 99 programs
Speed Accuracy	± 100 RPM	Noise Level	<65 dB
Motor Type	Brushless DC motor (BLDC)	Imbalance Detection	Yes
Rotor Capacity	400 mL (4x100 mL)		
Display	Yes, LED Display	Rotors (optional)	Multiple rotor options (swing-out and fixed-angle rotors)
Time Setting	from 1 to 99 mins and infinite mode	Dimensions (W x D x H)	585 x 475 x 325 mm
Min. Acceleration Time	30 sec.	Weight	23kg (without rotor)
Min. Deceleration Time	30 sec.	Power Consumption	300 W

Scope of Delivery

1 pc. Universal Centrifuge	1 pc. Grease Tube
1 pc. Power Adapter	1 pc. User Manual
1 pc. T-Allen Key	1 pc. Warranty Card

CR-43-50-4

4 x 50 mL
swing out rotor, with
stainless steel tubes,
RCF 3485 x g

**CR-43-50-4F**

4 x 50 mL
fixed angle rotor,
with stainless steel
tubes, RCF 2644 x g

**CR-43-100**

4 x 100 mL
swing out rotor with
Bio Safety Cap,
RCF 3164 x g

**CR-43-100F**

4 x 100 mL
fixed-angle rotor
RCF 2559 x g

**CR-43-15**

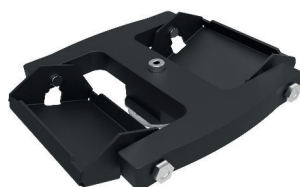
16 x 15 mL swing out
rotor with stainless steel
tubes RCF 3485 x g

**CR-43-15F-16**

16 x 15 mL
fixed-angle rotor
RCF 3144 x g

**CR-43-PL**

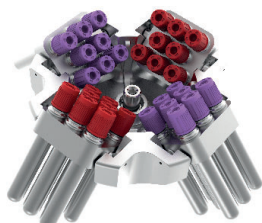
2 x plate
swing out rotor
RCF 2355 x g

**CR-43-15F-24**

24 x 15 mL
fixed-angle rotor
RCF 2852 x g

**CR-43-06**

32 x 6mL
swing rotor
RCF 3164 x g



Ordering Information

Cat. No.	Description
CR-432X	CAPProndo Universal Centrifuge (up to 4 x 100 mL)
Rotor options	
CR-43-50-4	4 x 50 mL swing out rotor, with stainless steel tubes, RCF 3485 x g
CR-43-100	4 x 100 mL swing out rotor with Bio Safety Cap, RCF 3164 x g
CR-43-15	16 x 15 mL swing out rotor with stainless steel tubes, RCF 3485 x g
CR-43-PL	2 x plates swing out rotor, RCF 2355 x g
CR-43-06	32 x 6 mL swing out rotor, RCF 3164 x g
CR-43-50-4F	4 x 50 mL fixed angle rotor, with stainless steel tubes, RCF 2644 x g
CR-43-100F	4 x 100 mL fixed-angle rotor, RCF 2559 x g
CR-43-15F-16	16 x 15 mL fixed-angle rotor, RCF 3144 x g
CR-43-15F-24	24 x 15 mL fixed-angle rotor, RCF 2852 x g
CR-43-06	32 x 6mL swing rotor, RCF 3164 g (includes 32 x 6mL SS tubes dia.13 mm, length 100 mm)

Important note – Each rotor has a range of optional tube adaptors.

Go to: www.CAPP.dk/product/CAPProndo-universal-centrifuge to see the full overview of all adaptors available.