



Benchtop
Equipment
CATALOGUE

2025/26



Empowering your lab with precision and innovation

At CAPP, we know that modern laboratories demand not just reliable tools, but cutting-edge solutions that ensure accuracy and efficiency in every experiment.

From pipetting solutions to a full range of benchtop equipment, our products are designed to meet the rigorous standards of scientific research, enabling you to focus on what truly matters: advancing your research and achieving reproducible results.

Our catalogue offers a broad selection of high-performance instruments for various laboratory applications, including molecular biology, microbiology, and cell culture. Each product is engineered for ease of use and optimised for seamless integration into your workflow. Whether it's minimising evaporation in PCR, ensuring consistent cell growth, or improving liquid handling accuracy, CAPP is committed to supporting your success in the lab.

Alongside our precision-engineered products, we offer extensive resources and expert guidance. You'll find practical tips and usage recommendations throughout this catalogue, helping you get the most out of every instrument. For more in-depth information, our online knowledge base provides additional resources and technical notes to enhance your laboratory's performance.

Discover how CAPP can elevate your laboratory's precision and productivity with innovative, high-quality solutions. Explore our catalogue and see the difference CAPP can make in your scientific journey.

We are proud to be your partner in excellence.

Your CAPP Team

Index

| | |
|----------------------------|----|
| Mini Incubator | 7 |
| Mini Vortex Mixer | 8 |
| Vortex Mixer | 9 |
| Microcentrifuge | 10 |
| High Speed Mini Centrifuge | 11 |
| PCR Plate Centrifuge | 12 |
| Universal Centrifuge | 13 |
| Clinical Centrifuges | 15 |
| Refrigerated Centrifuge | 17 |
| Gel Card Centrifuge | 19 |
| Platform Shaker | 20 |
| Single Plate Shaker | 21 |
| 4-Place Plate Shaker | 22 |
| 4-Place Incubating Shaker | 23 |
| 3D Shaker | 24 |
| Magnetic Stirrers | 25 |
| Hotplate Stirrer | 28 |
| Tube Roller | 29 |
| Tube Rotators | 30 |
| Microplate Washer | 32 |

Certification

We use state-of-the-art energy-efficient technology to manufacture eco-friendly products with minimal environmental impact. Sustainability drives every step, from sourcing green materials to durable designs and recyclable packaging.

As a Green Dot-certified company, we're part of a Europe-wide recycling initiative, making it easy for our German customers to recycle through the national system.



Der Energiedienstleister

Green electricity certificate

for the supply of 100% green electricity from hydropower plants for AHN Biotechnologie GmbH in calendar year 2024 (1.0 million kWh/year).



There are no CO₂ emissions during electricity production.

Proof of the allocation of the green electricity quantities is provided by Energieversorgung Nordhausen GmbH after delivery in the Guarantee of Origin Register of the Federal Environment Agency in Dessau/Roßlau.



Nordhausen
Energieversorgung Nordhausen GmbH

This declaration of guarantees of origin complies with the legal requirements for electricity labelling in accordance with § 42 of the Energy Industry Act. Accordingly, an electricity supplier must use guarantees of origin for directly marketed "other renewable energies" that have not been financed by the EEG surcharge and validate them at the Federal Environment Agency. The Register of Guarantees of Origin at the Federal Environment Agency implements the requirements of EU Directive 2009/28/EC in Germany. Article 15 of that directive requires Member States to establish an electronic register of electricity from renewable energy sources. The Renewable Energy Sources Act entrusts this task to the Federal Environment Agency (§ 79 EEG 2017). The Guarantees of origin are validated for AHN Biotechnologie GmbH by Energieversorgung Nordhausen GmbH.



Confirmation

Ahn Biotechnologie GmbH
Uthleber Weg 14
D-99734 Nordhausen

Customer no. | Reg.no.: DE4909522176878

We herewith confirm the participation of your packaging according to § 7 para. 1 VerpackG in our system for the year 2024.

The presentation of this certificate to your customers and business partners ensures transparency about the proper participation of your packaging within the framework of the Packaging Act.





13.03.2024
date
Jörg Deppmeyer
Managing Director



Dr. Markus Helftes
Managing Director





Industrie Service

CERTIFICATE

TÜV SÜD Industrie Service GmbH TÜV SÜD hereby confirms that the cleanroom system

| Room-No. | Room name | Air cleanliness class according to DIN EN ISO 14644-1/ in operation |
|----------|------------|---|
| P 1.02 | Produktion | 9 |
| P 1.03 | Fertigung | 7 |

of the company

AHN Biotechnologie GmbH
Uthleber Weg 14
D-99734 Nordhausen
Germany

meets the requirements for airborne particles according to the cleanliness classes according to DIN EN ISO 14644-1. The basis for issuing the certificate is the metrological acceptance of the room areas according to the international standard DIN EN ISO 14644-1. The measurements were carried out operationally on August 14, 2024, by TÜV SÜD Industrie Service GmbH.

Report-No.: 3981804-00
Certificate-No.: 3981804-00
Date of Expiry: August 2025



Dipl.-Biol. Katrin Hartmann
Berlin, 20.08.2024
TÜV SÜD Industrie Service GmbH
Wilhelmstraße 30, Haus L, 13509 Berlin

CERTIFICATE



for the management system
according to ISO 9001:2015

The proof of the conforming application with the regulation was furnished and in accordance with certification procedure it is certified for the company



AHN Biotechnologie GmbH
Uthleber Weg 14, 99734 Nordhausen / Germany

Scope

Development, manufacturing and sale of laboratory products, especially for molecular biology

Certificate Registration No.: TIC 15 100 88635
Valid until: 2025-05-07
Valid from: 2023-05-08

Audit Report No. 3330 24AH P3

This certification was conducted in accordance with the TIC auditing and certification procedures and is subject to regular surveillance audits.



TÜV Thüringen e.V.
Certification only for systems and personnel



Jena, 2023-04-05





Sustainability

We model our commitment to sustainable production through our environmentally-friendly manufacturing practices and products.

We have a wide range of sustainable laboratory consumables expertly crafted to help you reach your sustainability goals while practicing excellent science.

100%
electrical injection moulding

= 40% less electricity consumption
compared to hydraulic machines



100%
recycled plastic

in production of CAPP rack boxes



100%
reusable racks

suitable for multiple
autoclaving cycles



65%
space saved

when using a reload system
- reducing packaging and transport



59%
plastic saved

when using a reload system



Zero
additional plastic ingredients

packs, inserts and reloads are made
entirely from recyclable polypropylene



Unlimited
upcycling options

for reusing tip racks as
storage solutions



Our Ecotrade Programme – the green economy

We fully realise that, by the very nature of some of our products, some can only be used for a short time, and sometimes just once.

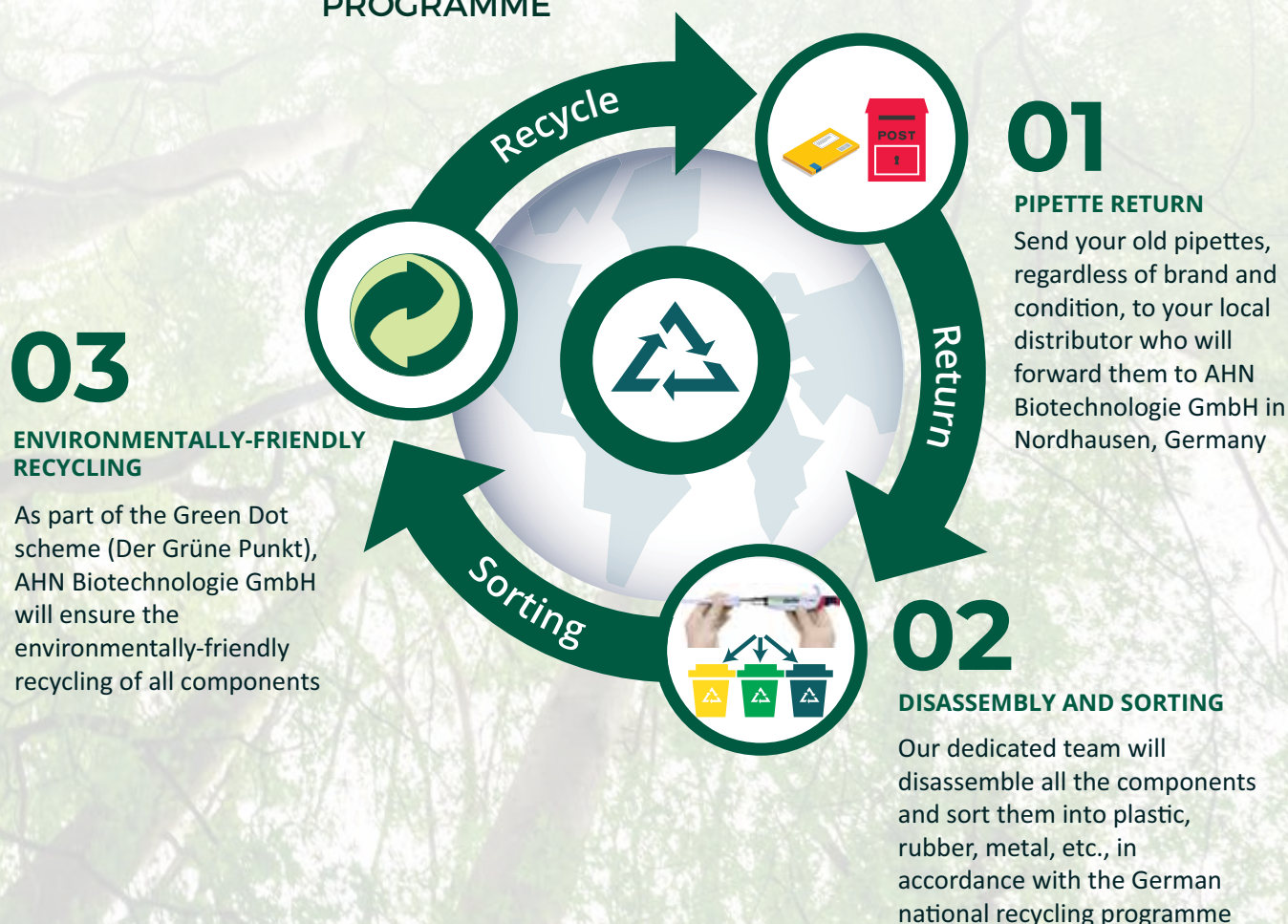
Our answer to this is to recycle as much as we possibly can and encourage our customers to do the same.

Customers can partner with AHN by incorporating sustainable laboratory practices through the ecotrade programme.

By partnering with a local distributor you can submit your old pipettes (of any brand, not just ours). Our distribution partner will then ship the old pipettes to our manufacturing facility where we will carefully disassemble each pipette into its individual component, following Green Dot guidelines.



Did you know?
Old pipettes can
be responsibly
recycled through
AHN Biotechnologie
GmbH



For further information visit www.capp.dk/blog/sustainable-lab-consumables

The CAPP Rondo Mini Incubator is the perfect lab incubator for space-limited and mobile laboratories. Designed with a fine-tuned microprocessor-controlled thermal system and generous internal space.

Features

- User-friendly, intuitive control panel with a large easy-to-read LED display
- Microprocessor-controlled thermal adjustment with fine, granular $\pm 1^{\circ}\text{C}$ adjustments
- Large inner chamber (22 L) with plenty of space for holding a variety of sample types
- Removable, adjustable shelving makes it easy to adjust the space to suit the samples to be stored
- Small footprint is ideal for space-restricted labs
- Internal chamber illuminated with a bright light fixture for easy sample retrieval, even in low light conditions
- Internal power outlet for powering small instruments (e.g. vortex mixers, rollers, shakers etc.)



Specifications

| | | | |
|-------------------------------|--------------------------------|----------------------------|--------------------|
| Temperature Range | 15°C below ambient, up to 60°C | Exterior Dimensions | 410 x 340 x 480 mm |
| Temperature Accuracy | 0.5°C (at 37°C) | Interior Dimensions | 260 x 235 x 360 mm |
| Temperature Uniformity | +/- 1.5°C (at 37°C) | Weight | 7.4kg |
| Temperature Increments | +/- 1°C | Electrical | 100-240V, 50-60Hz |
| Capacity | 22 L | | |

Scope of Delivery

| |
|----------------------|
| 1 pc. Mini Incubator |
| 1 pc. Power Adapter |
| 1 pc. User Manual |
| 1 pc. Warranty Card |

Ordering Information

| Cat No. | Description |
|---------|--------------------------|
| CR-MI1 | CAPPRondo Mini Incubator |

CAPPRondo Mini Vortex Mixer offers the ideal solution for thorough mixing and quick vortexing, delivering high performance in terms of speed, reliability and safety.

Features

- Microprocessor-controlled ensures delivery of the maximum speed, even under varying load conditions
- Variable speed is adjusted by turning speed control button
- Highly touch-sensitive switch ensures real-time mixing
- Suspension design for longer switch life
- Low-profile design with a small footprint, making it ideal for laboratory benches
- In-built counterbalance system creates maximum vortexing action, while minimising noise and excessive vibration
- Brushless DC motor for safety, quick acceleration and low maintenance
- Ideal for cold rooms and incubators, it maintains a set speed between 5-40°C
- Chemically-resistant PC ABS molded exterior, with aluminium die-cast base



Specifications

| | | | |
|---------------------------|--------------------|--|-----------------------------------|
| Speed Range | 2000- 4500 RPM | Protection Class (DIN EN 60529) | IP 43 |
| Speed Accuracy | ± 5 % | Material | Body- PC ABS / Platform- Die Cast |
| Motor Type | Brushless DC motor | Operating Mode | Touch |
| Max. Load Capacity | 500 g | Dimensions (W x D x H) | 100 x 100 x 70 mm |
| Max Tube Diameter | 30 mm | Weight | 0.55kg |
| Motion | Orbital | Power Consumption | 15 W |
| Orbital Diameter | 4.5 mm | | |

Scope of Delivery

- 1 pc. Mini Vortex Mixer
- 1 pc. Inbuilt Power Adapter
- 1 pc. User Manual
- 1 pc. Warranty Card

Ordering Information

Cat. No. Description

| | |
|---------|---|
| CRV-45X | CAPPRondo Mini Vortex Mixer 4500 RPM w/ adjust. speed |
|---------|---|

CAPP Rondo

VORTEX MIXER



The CAPP Rondo Vortex Mixer is an indispensable piece of high-performance equipment designed to meet the rigorous demands of everyday mixing operations in any laboratory setting.

Features

- Maintenance-free motor technology is ideal for extended runs
- Adjustable speed and time, speed ranging from 300-3000 RPM
- Remains static on the bench due to the inbuilt counterbalance
 - Has a conical tube attachment. A round disk attachment with base is also available as an accessory



Conical tube attachment



Round disk attachment

Scope of Delivery

| |
|--|
| 1 pc. Vortex Mixer |
| 1 pc. Power Adapter |
| 1 pc. Standard Conical Tube Attachment (pre-installed) |
| 1 pc. User Manual |
| 1 pc. Warranty Card |

Specifications

| | | | |
|---------------------------|---------------|-------------------------------|-------------------------------------|
| Speed Range | 300- 3000 RPM | Operating Mode | Touch, Timer, Continuous (999 mins) |
| Motor | Brushless DC | Display | Yes |
| Max. Load Capacity | 500g | Pulse Mode | Yes, Programmable |
| Motion | Orbital | Dimensions (W x D x H) | 200 x 225 x 107 mm |
| Orbital Diameter | 4 mm | Weight | 4kg |
| Protection Class | IP 21 | Power Consumption | 22 W |

Ordering Information

| Cat. No. | Description |
|-------------|---|
| CRV-30XC | CAPPRondo Vortex Mixer 3000 RPM w/ adjust. speed, timer and continuous mode |
| CRV-30XC-RA | Round disc attachment with base for CRV-30XC CAPPRondo Vortex Mixer |

CAPPRondo Microcentrifuge has a lot more to offer than the basic microcentrifuges available on the market. It is available in two versions. The CR-68, is the basic version with a fixed speed of 6000 rpm/2000 x g. CR-68X is the advanced model with programmable speeds of up to 6000 rpm/2000 g and a timer function, which is operated via two buttons and a digital display.

Features

- Quiet and powerful operation
- Supplied with 2 interchangeable magnetic rotors and reduction adaptors
- Equipped with safety functions such as a lid safety interlock and electronic safety brake, which activates an immediate stop when the lid is opened
- Quick operation with a simple lid open/close, starts and stops in seconds
- Microprocessor-controlled digital display with speed and time indication
- Small footprint for use in hoods and at small working areas
- Magnetic rotor for easy tool-free rotor replacement



Specifications

CR-68

| | |
|------------------------|--------------------------------|
| Speed | 6000 RPM |
| | 2000 x g (max. RCF) |
| Speed Accuracy | ± 300 RPM |
| Motor Type | DC motor |
| Rotor Capacity | 8 x 1.5/2.0 mL. 2 x 8 x 0.2 mL |
| Time | No |
| Display | No |
| Dimensions (W x D x H) | 162 x 157 x 116 mm |
| Weight | 1.1kg |
| Power consumption | 10 W |

CR-68X

| | |
|------------------------|--|
| Speed | 1000-6000 RPM |
| | 2000 x g (max. RCF) |
| Speed Accuracy | ± 100 RPM |
| Motor Type | Brushless DC motor |
| Rotor Capacity | 8 x 1.5/2.0 mL & 2-place PCR strip rotor |
| Time Setting | 0 to 25 mins and infinite |
| Display | Yes |
| Dimensions (W x D x H) | 162 x 157 x 116 mm |
| Weight | 1.1kg |
| Power consumption | 15 W |

Scope of Delivery

| |
|--|
| 1 pc. Microcentrifuge |
| 1 pc. Power Adapter |
| 1 pc. 8 x 1.5/2.0 mL Closed Micro Tube Rotor |
| 1 pc. 2 x 8x0.2 mL PCR Strip Rotor |
| 8 pcs. Adaptors for 0.5 mL Tubes |
| 8 pcs. Adaptors for 0.1/0.2 mL Tubes |
| 1 pc. User Manual |
| 1 pc. Warranty Card |

Ordering Information

| Cat. No. | Description |
|----------|--|
| CR-68 | CAPPRondo Microcentrifuge 6000 RPM/2000 x g |
| CR-68X | CAPPRondo Microcentrifuge w/ adjustable speed and timer function, max. 6000 RPM/2000 x g |

CAPP Rondo

HIGH SPEED MINI CENTRIFUGE

CAPP Rondo Mini Centrifuge is a modern, easy-to-use, and high-performance mini centrifuge equipped with a maintenance-free drive.

Features

- Lid lock safety and imbalance detection features ensure the utmost safety of the user during the operation
- USB port for remote control via a terminal device with data logger
- Adaptors provided for 0.1/0.2 mL and 0.4/0.5 mL tubes
- Quick and convenient setting made possible by the simple, intuitive interface
- Aluminum rotor, with a capacity to hold 12 tubes of 2 mL in volume, and a secure, screw-on metal lid
- Functions - last run memory / countdown timer / one touch short spin centrifugation / RPM/RCF speed setting / error display
- Small footprint



Specifications

| | |
|-------------------------------|---|
| Speed | 500 - 15000 RPM / 15596 x g (max. RCF) |
| Speed Accuracy | ± 100 RPM |
| Motor Type | Brushless DC |
| Rotor Capacity | 12 x 2.0 mL microtubes (pre-installed) Optional 2x8 0.1/0.2 mL PCR strip rotor |
| Time Setting | 30 sec. to 999 min. and infinite mode |
| Noise Level | < 60 db |
| Imbalance Detection | Yes |
| Display | Yes, backlit LCD display |
| Remote Operation | Yes, via USB Port |
| Dimensions (W x D x H) | 262 x 230 x 131 mm |
| Weight | 4.5kg (with rotor) |
| Power Consumption | 72 W |

Scope of Delivery

| |
|--|
| 1 pc. High Speed Mini Centrifuge |
| 1 pc. Power Adapter |
| 1 pc. USB Cable |
| 1 pc. Software CD |
| 1 pc. T-Allen Key |
| 1 pc. 12 slots microtube rotor (Pre-installed) |
| 12 pcs Adaptors for 0.4/0.5 mL Tubes |
| 12 pcs Adaptors for 0.1/0.2 mL Tubes |
| 1 pc. User Manual |
| 1 pc. Warranty Card |

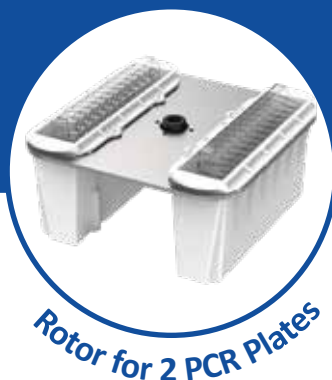
Ordering Information

| Cat. No. | Description |
|-----------|---|
| CR-1512 | CAPPRondo Mini Centrifuge 15000 RPM/15595 x g, for 12x 1.5/2.0 mL tubes |
| CR-15-PCR | PCR strip rotor for CAPPRondo CR-1512 w/ reduction adaptors, 1 pc. |

The CAPP Rondo CR-22P PCR Plate Centrifuge is a compact centrifuge for spinning down samples in PCR plates. This modern PCR Plate Centrifuge is compatible with both 96-well plates and 384-well plates.

Features

- Maintenance-free brushless DC motor
- Modern microprocessor-controlled centrifuge with variable speed and time setting and last run memory feature
- P1/P2 program feature
- Lid-lock safety mechanism prevents access to the rotor while it is spinning
- Automatic imbalance detection protects the centrifuge from running with an uneven load
- Intuitive and precise volume/speed adjustment via a digital interface with soft-touch buttons
- Small footprint and low loading height for maximum space saving



Ordering Information

Specifications

| | |
|-------------------------------|-----------------------------------|
| Speed | 500- 2500 RPM / 462 x g (max RCF) |
| Speed accuracy | ±100 RPM |
| Motor type | Brushless DC motor |
| Rotor capacity | 2 PCR plates (96 and 384-well) |
| Time Setting | 1 to 999 min. and infinite mode |
| Acceleration time | 30 + 5 seconds |
| Deceleration time | 20 + 5 seconds |
| Display | Yes |
| Dimensions (W x D x H) | 330 x 265 x 161 mm |
| Weight | 4kg (without rotor) |
| Power consumption | 24 W |

Cat No. Description

| | |
|--------|---|
| CR-22P | CAPPRondo PCR Plate Centrifuge 2500 RPM/ 462 x g for 2x PCR plates |
|--------|---|

Scope of Delivery

| |
|------------------------------|
| 1 pc. PCR Plate Centrifuge |
| 1 pc. Power Adapter |
| 1 pc. T-Allen Key |
| 1 pc. Rotor for 2 PCR Plates |
| 1 pc. User Manual |
| 1 pc. Warranty Card |
| 1 pc. User Manual |

CAPP Rondo

UNIVERSAL CENTRIFUGE



CAPP Rondo Universal Centrifuge has been developed after much research on user feedback and expectations.

Occupying a minimal amount of bench space, it offers powerful and efficient centrifugation while maintaining high performance over a long time of use.

Features

- Wide range of rotor options include both swing-out and fixed-angle rotors for versatile applications
 - Emergency Lid Release provides safe lid opening if power is lost
 - Imbalance detection with auto cutoff feature
- Nine acceleration/deceleration modes allow a smooth start/stop to protect sensitive samples
 - Intelligent airflow system that prevents sample overheating during centrifugation
- User-friendly interface with a digital display for easy monitoring of multiple parameters
 - Functions – last run memory / countdown timer / quick spin / RPM/RCF speed setting / error display / customised programs

Specifications

| | | | |
|-------------------------------|--|-------------------------------|---|
| Speed | 500 - 4500 RPM / RCF varies per rotor type | Programmable | Yes, up to 99 programs |
| Speed Accuracy | ± 100 RPM | Noise Level | <65 dB |
| Motor Type | Brushless DC motor (BLDC) | Imbalance Detection | Yes |
| Rotor Capacity | 400 mL (4x100 mL) | | |
| Display | Yes, LED Display | Rotors (optional) | Multiple rotor options (swing-out and fixed-angle rotors) |
| Time Setting | from 1 to 99 mins and infinite mode | Dimensions (W x D x H) | 585 x 475 x 325 mm |
| Min. Acceleration Time | 30 sec. | Weight | 23kg (without rotor) |
| Min. Deceleration Time | 30 sec. | Power Consumption | 300 W |

Scope of Delivery

| | |
|----------------------------|---------------------|
| 1 pc. Universal Centrifuge | 1 pc. Grease Tube |
| 1 pc. Power Adapter | 1 pc. User Manual |
| 1 pc. T-Allen Key | 1 pc. Warranty Card |

| | | | |
|---|---|--|---|
| CR-43-50-4 4 x 50 mL swing out rotor, with stainless steel tubes, RCF 3485 x g |  | CR-43-50-4F 4 x 50 mL fixed angle rotor, with stainless steel tubes, RCF 2644 x g |  |
| CR-43-100 4 x 100 mL swing out rotor with Bio Safety Cap, RCF 3164 x g |  | CR-43-100F 4 x 100 mL fixed-angle rotor RCF 2559 x g |  |
| CR-43-15 16 x 15 mL swing out rotor with stainless steel tubes RCF 3485 x g |  | CR-43-15F-16 16 x 15 mL fixed-angle rotor RCF 3144 x g |  |
| CR-43-PL 2 x plate swing out rotor RCF 2355 x g |  | CR-43-15F-24 24 x 15 mL fixed-angle rotor RCF 2852 x g |  |
| CR-43-06 32 x 6mL swing rotor RCF 3164 x g |  | | |

Ordering Information

| Cat. No. | Description |
|----------------------|--|
| CRC-432X | CAPPRondo Universal Centrifuge (up to 4 x 100 mL) |
| Rotor options | |
| CR-43-50-4 | 4 x 50 mL swing out rotor, with stainless steel tubes, RCF 3485 x g |
| CR-43-100 | 4 x 100 mL swing out rotor with Bio Safety Cap, RCF 3164 x g |
| CR-43-15 | 16 x 15 mL swing out rotor with stainless steel tubes, RCF 3485 x g |
| CR-43-PL | 2 x plates swing out rotor, RCF 2355 x g |
| CR-43-06 | 32 x 6 mL swing out rotor, RCF 3164 x g |
| CR-43-50-4F | 4 x 50 mL fixed angle rotor, with stainless steel tubes, RCF 2644 x g |
| CR-43-100F | 4 x 100 mL fixed-angle rotor, RCF 2559 x g |
| CR-43-15F-16 | 16 x 15 mL fixed-angle rotor, RCF 3144 x g |
| CR-43-15F-24 | 24 x 15 mL fixed-angle rotor, RCF 2852 x g |
| CR-43-06 | 32 x 6mL swing rotor, RCF 3164 g (includes 32 x 6mL SS tubes dia.13 mm, length 100 mm) |

Important note – Each rotor has a range of optional tube adaptors.

Go to: www.CAPP.dk/product/CAPPProndo-universal-centrifuge to see the full overview of all adaptors available.

CAPP Rondo

CLINICAL CENTRIFUGE



CAPP Rondo Clinical Centrifuge is a compact and reliable low-speed centrifuge, ideal for blood centrifuge applications involving volumes below 15 mL. It stands out in its category for having great features that ensure an easy-to-use, reliable, safe performance.

Features

- Rotor capacity of up to 8 x 15 mL tubes on a fixed-angle rotor
 - Smart airflow design reduces noise
 - Precise RPM setting with increments from 100 RPM and setting from 500-6500 RPM
- Built with a long-life brushless DC motor and a microprocessor
 - Can accommodate widely used blood collection tubes due to included adaptors for 5 mL, 7mL, 1.5 mL and 2 mL tubes
 - Digital display with speed and timer indicator
 - Automatic imbalance detection
- Lid lock safety – lid opens automatically after the operation is completed
- Functions – countdown timer / RPM/RCF speed setting / error display



Rotor

Specifications

| | |
|-------------------------------|--------------------------------------|
| Speed | 500 - 6500 RPM / 3873 x g (max. RCF) |
| Speed Accuracy | ±100 RPM |
| Motor Type | Brushless DC Motor |
| Time Setting | 1 to 30 min and infinite mode |
| Imbalance Detection | Yes |
| Noise Level | < 60 dB |
| Acceleration Time | 43 ± 2 sec. |
| Deceleration Time | 40 ± 2 sec. |
| Display | Yes |
| Dimensions (W x D x H) | 244 x 260 x 203 mm |
| Weight | 4kg (with rotor) |
| Power Consumption | 100 W |

Scope of Delivery

| |
|---|
| 1 pc. Clinical Centrifuge |
| 1 pc. 8-slots Fixed Angle Rotor (Pre-installed) |
| 1 pc. Power Adapter |
| 1 pc. T-Allen Key |
| 8 pc. Reduction Adaptors |
| 8 pc. Tube Holder and Rubber Cap |
| 1 pc. User Manual |
| 1 pc. Warranty Card |

Ordering Information

| Cat. No. | Description |
|----------|---|
| CRC-658 | CAPPRondo Clinical Centrifuge 6500 RPM / 3.873 x g for 8 x 15 mL |

With multiple rotor options, and maximum speed of 4000 RPM, the versatile CAPP Rondo Clinical Centrifuge accommodates a wide range of sample sizes. It is carefully designed with a compact footprint to occupy less desktop space, without losing functionality. Features such as its motorised latch, favourite mode, microprocessor-controlled motor all result in a superbly easy-to-use piece of equipment

Features



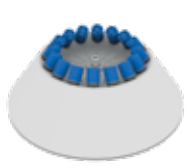
- Brushless DC motor enables maintenance-free and long-lasting operation
- Microprocessor-controlled with variable speed and time setting
- Safe operation thanks to automatic imbalance detection
- Compact design with low loading height allows an easy operation
- Precise RPM setting from 500 to 4000 RPM in steps of 10 RPM
- Safety lid brake, preventing the lid from opening until the rotor has completely stopped
- The user can program up to 99 individual protocols
- Functions – Short Spin operation / change from RPM to RCF / last run memory



Specifications

| | | | |
|----------------------------|-------------------------------------|-------------------------------|-----------------------|
| Speed | 500-4000 RPM / RCF varies per rotor | Display | Yes |
| Speed Accuracy | ± 10 RPM | Dimensions (W x D x H) | 381 x 480 x 185 mm |
| Time Setting | 1-999 minutes and infinite mode | Weight | 8.2kg (without rotor) |
| Imbalance Detection | Yes | Power Consumption | 90 W |
| Noise level | ≤65 dB (A) | | |

Rotor Types (optional)

| | | | | | |
|--------------------------------|---|----------------------------------|--|----------------------------------|---|
| Rotor Type Swing out |  | Rotor Type Fixed angle |  | Rotor Type Fixed angle |  |
| Capacity 6x10 mL | | Capacity 8x15 mL | | Capacity 16x10 mL | |
| Max RCF 2270 x g | | Max RCF 1950 x g | | Max RCF 2180 x g | |

Scope of Delivery

| |
|---------------------------|
| 1 pc. Clinical Centrifuge |
| 1 pc. Power Adapter |
| Reduction Adaptors |
| Tube Holder |
| 1 pc. User Manual |
| 1 pc. Warranty Card |

Ordering Information

| Cat No. | Description |
|----------|--|
| CRC-416X | CAPP Rondo Clinical Centrifuge 4000 RPM |
| CRC-4-8 | Fixed angle rotor of CRC-416X for 8 x 15 mL tubes |
| CRC-4-16 | Fixed angle rotor of CRC-416X for 16 x 10 mL tubes |
| CRC-4-6S | Swing-out rotor of CRC-416X for 6 x 10 mL tubes |

CAPP Rondo

REFRIGERATED CENTRIFUGE

The CAPP Rondo Refrigerated Centrifuge is a high-performance centrifuge for spinning samples in a controlled low-temperature environment of up to -20°C (±4°C). Using this centrifuge, molecular biology samples such as antibodies, DNA, RNA, and PCR, among others, can be processed with ease.



Features

- Comes with 4 interchangeable rotor options for flexible sample handling and easy customisation
- Brushless, maintenance-free DC motor runs at high speeds of up to 15000 RPM, delivering a smooth, high-speed performance with no maintenance required
- Refrigerated benchtop centrifuge maintains a stable temperature throughout the run, even at high speeds, with its built-in refrigeration system
- Flexible run timer offers exceptional versatility - from 30 seconds to 999 minutes - suitable for many protocols
- Up to 99 user-defined programs of four lines each
- Imbalance detection feature and lid lock safety mechanism for secure operation every time
- Silent operation
- Functions - countdown timer / RPM/RCF speed setting / error display

Specifications

| | | | |
|----------------------------|---|-------------------------------|--------------------|
| Speed | 500-15000 RPM / RCF varies per rotor | Display | Yes, backlit LCD |
| Speed Accuracy | ± 100 RPM | Time Setting | 30 sec. - 999 min. |
| Motor Type | Brushless DC | Temperature Range | - 20°C to 40 °C |
| Rotor Capacity | 24 x 1.5 / 2 ml micro tubes / 44 x 1.5 / 2 ml micro tubes / 8 x 5 ml / 4 PCR strips | Temperature Accuracy | ± 1 °C |
| Imbalance Detection | Yes | Dimensions (W x D x H) | 325 x 720 x 305 mm |
| Noise Level | <60 dB | Weight | 43kg |

Scope of Delivery

| | |
|-------------------------------|---------------------|
| 1 pc. Refrigerated Centrifuge | 1 pc. Grease Tube |
| 1 pc. Power Adapter | 1 pc. User Manual |
| Adaptors for 0.4/0.5 mL Tubes | 1 pc. Warranty Card |
| Adaptors for 0.1/0.2 mL Tubes | |

CR-15-44

Fixed angle rotor for
44x 1.5 mL/
2.0 mL microtubes

**CR-15-24**

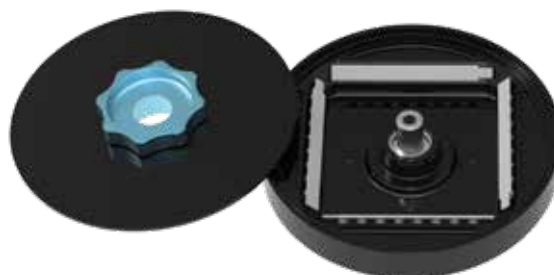
Fixed angle rotor
for 24x 1.5 mL/
2.0 mL microtubes

**CR-15-8**

Fixed angle rotor
for 8x 5.0 mL
microtubes

**CR-15-4**

Fixed angle rotor
for 4 strips of 8x 0.2 mL/
0.5 mL PCR tubes



Ordering Information

Cat No. Description

| | |
|----------|--|
| CR-1544R | CAPPRondo Refrigerated Centrifuge 15000 RPM, 220V |
| CR-15-44 | Fixed angle rotor for 44x 1.5 mL/ 2.0 mL MT, 22388 x g |
| CR-15-24 | Fixed angle rotor for 24x 1.5 mL/ 2.0 mL MT, 21420 x g |
| CR-15-8 | Fixed angle rotor for 8x 5.0 mL MT, 18462 x g |
| CR-15-4 | Fixed angle rotor for 4 strips of 8x 0.2 mL/ 0.5 mL PCR tubes, 15397 x g |

The CAPP Rondo Gel Card Centrifuge is designed for universal compatibility, making it suitable for use with all standard gel cards. It is an very good choice for hospitals, blood banks and laboratories.

Features

- This excellent centrifuge is capable of holding up to 12 gel cards simultaneously and is compatible with a wide variety of Gel Cards
- Favourite Mode allows users to set up and store up to 99 user-defined programs
- For enhanced safety, the CAPP Rondo Gel Card Centrifuge features a lid lock mechanism that secures the lid during operation
- Safe operation thanks to automatic imbalance detection
- Microprocessor-controlled centrifuge with variable speed and time setting
- The brushless DC motor enables maintenance-free and long-lasting operation
- Compact design with low loading height for easy operation
- Precise RPM setting from 500 to 2200 RPM in steps of 10 RPM
- Safety lid brake, preventing the lid from opening until the rotor has completely stopped
- Functions - last run memory / RPM/RCF speed setting / short spin



Specifications

| | | | |
|--------------------------|---------------------------|------------------------------|---------------------------------|
| Speed | 500-2200 RPM / RCF varies | Noise Level | < 65 dB (A) |
| Speed Accuracy | ± 100 RPM | Time Setting | 1 to 999 mins and Infinite mode |
| Motor Type | Brushless DC Motor | Display | Yes |
| Rotor Capacity | 12 Gel cards | Dimension (W x D x H) | 381 x 480 x 185 mm |
| Acceleration Time | 35 ± 5 seconds | Weight | 8.3kg |
| Deceleration Time | 50 ± 5 seconds | Power Consumption | 48 W |

Ordering Information

| Cat. No. | Description |
|-----------|---|
| CRC-212GC | CAPP Rondo Gel Card Centrifuge 2200 RPM |

Scope of Delivery

| |
|---------------------------|
| 1 pc. Gel Card Centrifuge |
| 1 pc. Power Adapter |
| 1 pc. T-Allen Key |
| Reduction Gel Card Plate |
| Gel Card Holder |
| 1 pc. User Manual |
| 1 pc. Warranty Card |



The CAPP Rondo Platform Shaker offers efficient mixing with a durable, maintenance-free design for extended use.

Features

- Offers multiple programmable modes, such as motion direction, speed, time, dwell time, sequence and loop operation
- Different optional attachment platforms and clamps make it possible to use almost all shapes and sizes of vessels
- The Auto Power On option ensures operation continues for the remaining time after a power failure

Specifications

| | | | |
|------------------------------|-------------------------------|-------------------------------|--|
| Speed | 50-300 RPM | Platform Size | 330 x 330 mm |
| Orbital Diameter | 20 mm | Protection Class | IP 21 |
| Motion | Orbital/Linear | Programmable Features | Up to 6 programs, each with 9 sub-programs |
| Motor Type | Brushless DC motor | | |
| Max. Loading Capacity | 7.5kg (with attachment) | Programmable Looping | Yes |
| Time Setting | 1 min to 99 hours and 59 mins | Dimensions (W x D x H) | 408 x 350 x 99 mm |
| Noise Level | < 60 dB | Weight | 10 kg |
| Digital Display | Yes | Power Consumption | 24 W |

Ordering Information

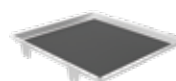
| Cat. No. | Description |
|-------------|---|
| CRP-3X | CAPPRondo Platform Shaker ø 20 mm |
| CRP-U | Universal Platform with Adjustable Bars (Flask capacity 9 x 250 mL, 6 x 500 mL) |
| CRP-D | Disk Attachment Base Plate with Slip-resistant Tray |
| CRP-C9-250 | Base Plate with 9 Plastic Clamps: 9 x 250 mL |
| CRP-C9-500 | Base Plate with 9 Plastic Clamps: 9 x 500 mL |
| CRP-F | Funnel Attachment |
| CRP-CS9-250 | Base Plate with 9 Stainless Steel Clamps: 9 x 250 mL |
| CRP-CS9-500 | Base Plate with 9 Stainless Steel Clamps: 9 x 500 mL |
| CRP-CS-100 | Stainless Steel Clamp for 100 mL Flask |
| CRP-CS-150 | Stainless Steel Clamp for 150 mL Flask |
| CRP-CS-250 | Stainless Steel Clamp for 250 mL Flask |
| CRP-CS-500 | Stainless Steel Clamp for 500 mL Flask |
| CRP-CS-1000 | Stainless Steel Clamp for 1000 mL Flask |

Scope of Delivery

- 1 pc. Platform Shaker
- 1 pc. Power Adapter
- 1 pc. Spanner
- 1 pc. User Manual
- 1 pc. Warranty Card



CRP-U



CRP-D



CRP-C9-250



CRP-C9-500



CRP-F



CRP-CS9-250



CRP-CS9-500



CRP-CS-250

CAPP Rondo

SINGLE PLATE SHAKER

The CAPP Rondo Plate Shaker is an ideal choice of microplate shaker for any test environment. It combines high performance and exceptional user-friendliness in a compact format. It saves valuable space and is ideal for use in cold rooms or incubators.

Features

- Comes with interchangeable clamps that provide universal fitting for different microplates
- Microprocessor-controlled for higher accuracy
- The in-built counterbalance ensures a stable, quiet and long-life operation
- Easy and spill-free loading and removal of plates
- Provided with an accessory tube platform to accommodate 20 microtubes of 1.5/2 mL
- Compact footprint saves valuable space, ideal for use in cold rooms or incubators (5 to 40°C)
- Variable Speed and Timer Setting
- Rubber suction cups for stable operation



Tube foam adaptor



Clamp set

Specifications

| | |
|-------------------------|-------------------------------|
| Speed | 300- 1800 RPM |
| Orbital Diameter | 2 mm (orbital motion) |
| Motor Type | Brushless DC |
| Time Setting | 1 to 99 min and infinite mode |
| In-built Counterbalance | Yes |
| Noise Level | <60 dB |
| Digital Display | Yes |
| Dimensions (W x D x H) | 127 x 86 x 85 mm |
| Weight | 1.4kg |
| Power Consumption | 9 W |

Scope of Delivery

| |
|---------------------------|
| 1 pc. Single Plate Shaker |
| 1 pc. Power Adapter |
| Clamp Sets |
| O-Rings |
| 1 pc. MCT Foam Attachment |
| 1 pc. User Manual |
| 1 pc. Warranty Card |

Ordering Information

| Cat. No. | Description |
|----------|---|
| CRP-18X | CAPPRondo plate shaker, 300 to 1800 RPM |

CAPP Rondo

4-PLACE PLATE SHAKER

CAPPRondo 4-Place Plate Shaker is the perfect solution for efficiently and thoroughly mixing up to four individual microplates of various types at once. Its precise 3 mm orbital motion delivers exceptional mixing performance, ensuring consistent results with every use.

Features

- Shaker is compatible with all commonly used skirted microplates
- Pulse mode for continuous mixing in both clockwise and counterclockwise directions
- Microprocessor controlled for efficient performance even under high load
- Last run feature
- Rubber O-rings ensure an ultimate grip for all four plates
- Digital display gives the user an overview of the speed and time settings
- Easy access to all 4 plates for easy loading and unloading



Specifications

| | | | |
|-------------------------|--------------------------------------|-------------------------------|--------------------|
| Speed | 200 - 1200 RPM | Digital Display | Yes |
| Orbital Diameter | 3 mm | Platform Size | 274 x 188 mm |
| Motion | Orbital | Protection Class | IP 21 |
| Motor Type | BLDC motor | Noise Level | <60 dB |
| Time Setting | 1 to 99 mins and infinity mode | Dimensions (W x D x H) | 267 x 393 x 105 mm |
| Pulse Mode | Yes, clockwise and counter clockwise | Weight | 4.91kg |
| Capacity | Up to 4 microplates | Power Consumption | 36 W |

Ordering Information

Cat No. Description

| | |
|----------|---|
| CRP-412X | CAPPRondo 4-Place Plate Shaker 1200 RPM |
|----------|---|

Scope of Delivery

| |
|----------------------------|
| 1 pc. 4-Place Plate Shaker |
| 1 pc. Power Adapter |
| 1 pc. O-Ring |
| 1 pc. User Manual |
| 1 pc. Warranty Card |

CAPP Rondo

4-PLACE INCUBATING SHAKER

The CAPP Rondo 4-Place Incubation Shaker provides thorough mixing and even heating for 96/384-well microplates. This innovative microprocessor-controlled incubating shaker can be used in a wide spectrum of life science applications including immunochemistry protocols, biochemical analyses, cell culture protocols, microarrays, and more.

Features

- High-performance maintenance-free DC motor with extended run times (from 1 to 99 minutes and beyond)
- Large capacity for 4 x 96/384 microplates
- Pulse mode for continuous clockwise and counterclockwise mixing of samples in microplates
- Incubation shaker with a simple design for easy access to all 4 plates and effortless cleaning and maintenance
- Temperature control from ambient 3°C to 70 °C
- Last run feature
- Rubber O-rings ensure the ultimate grip for all four plates



Specifications

| | | | |
|---------------------------------------|---------------------|-------------------------------|---|
| Speed | 200-1200 RPM | Time Setting | 1 to 99 hours 59 min and infinite |
| Motion | 3mm, Orbital | Pulse Mode | Programmable (clockwise and counterclockwise) |
| Motor Type | Brushless DC | Display | Yes |
| Capacity | 4 Microplates | Dimensions (W x D x H) | 267 x 361 x 155 mm |
| Temperature Range | Ambient 3°C to 70°C | Weight | 8.45kg |
| Temperature Stability/Accuracy | ±0.5°C | Power Consumption | 264 W |

Ordering Information

| Cat. No. | Description |
|-----------|-------------------------------------|
| CRPI-412X | CAPPRondo 4-Place Incubating Shaker |

Scope of Delivery

| |
|---------------------------------|
| 1 pc. 4-Place Incubating Shaker |
| 1 pc. Power Adapter |
| 1 pc. O-Ring |
| 1 pc. User Manual |
| 1 pc. Warranty Card |

CAPP Rondo

3D SHAKER

CAPP Rondo 3D Shaker operates at a variable speed range from 10 to 120 RPM. Driven by a brushless DC motor it ensures stable, quiet and maintenance-free operation, making it the right choice for applications requiring extended run sessions.

Features

- With an operational capacity of 5kg, the three-dimensional rocking and tumbling motion provides thorough homogenous mixing
- The user can save up to 9 individual protocols
 - To assure total stability on the bench the shaker is equipped with non-slip rubber feet and comes with a spiked rubber mat
- Accessories - Spiked rubber mat (included), Sticky pad mat (optional: Cat. No. CR3-08X-0001)



Specifications

| | | | |
|-------------------------|---------------------------------------|-------------------------------|---------------------------|
| Speed | 10-120 RPM in steps of 1 RPM | Time Setting | 1-999 minutes or infinite |
| Load Capacity | 5kg incl. attachment | Protection Class | IP 21 |
| Motor | BLDC (Brushless DC motor) | Display | Yes |
| Movement | Tumbling in fixed angle $\pm 7^\circ$ | Dimensions (W x D x H) | 392 x 268 x 197 mm |
| Plate Dimensions | 350 x 350 mm | Weight | 7kg |
| Pulse Mode | Yes, programmable | Power Consumption | 17 W |

Ordering Information

| Cat. No. | Description |
|----------|---------------------|
| CR3-08X | CAPPRondo 3D Shaker |

Scope of Delivery

| |
|-------------------------|
| 1 pc. 3D Shaker |
| 1 pc. Power Adaptor |
| 1 pc. Spiked Rubber Mat |
| 1 pc. User Manual |
| 1 pc. Warranty Card |

CAPP Rondo

MAGNETIC STIRRER

The CAPP Rondo Magnetic Stirrer is a compact, high-performance device. It features a durable stainless steel top surface that resists moderate contamination of harsh chemicals, making it suitable for a variety of lab environments.

Features

- Adjustable speed and timer
- Last run memory feature
- Pulse mode works for 30 seconds in each direction, for improved mixing
- Wear-free driven without any moving parts
- Innovative, water spill resistant design is IP 65 compliant
- Slim profile of just 16.5 mm thick
- Easy-to-use control pad with user-friendly interface
- Flat surface for ease of cleaning



Specifications

| | | | |
|------------------------------------|-----------------|-------------------------------|---|
| Speed | 15 to 1500 RPM | Time Setting | 1 to 99 minutes and infinite mode |
| Load Capacity | 800 mL (H2O) | Pulse Function | Yes, auto direction change, with time interval of 30 sec. |
| Plate Material | Stainless Steel | Dimensions (W x D x H) | 124 x 191 x 16.5 mm |
| Plate Diameter | 94 mm | Weight | 500g |
| Recommended Stir Bar Length | 25 mm | Power Consumption | 5 W |
| Digital Display | Yes | | |

Ordering Information

Cat. No. Description

| | |
|---------|---|
| CRS-15X | CAPPRondo Magnetic Stirrer 1500 RPM w/ 1 stirring bar |
|---------|---|

Scope of Delivery

| |
|-----------------------------|
| 1 pc. Magnetic Stirrer |
| 1 pc. Inbuilt Power Adapter |
| 1 pc. Stirring Bar |
| 1 pc. User Manual |
| 1 pc. Warranty Card |

Important note – to maximise the performance of your CAPPRondo Magnetic Stirrer, we recommend that you use our original Teflon coated, 25 mm high strength stirring bar. One unit is supplied with each instrument. Contact your local distributor to order more.

The CAPP Rondo Magnetic Stirrer a compact liquid mixing device designed for excellent stirring of liquids of various viscosities. The space efficient design allows for a broad scope of usage environments ranging from normal workbenches to laminar-flow cabinets, hoods, and cold rooms.

Features

- Compact magnetic stirrer with a large volume capacity (up to 10L)
- Portable mixer that can be easily moved around the laboratory
- Intuitive single-knob operation provides plug-and-play setup for maximum efficiency and minimum set up
- Space-efficient dimensions are tailored for confined laboratory spaces such as hoods, cabinets and cold rooms



Specifications

| | | | |
|-----------------------|-------------------------------------|-------------------------------|----------------------|
| Speed | 400 – 2200 RPM | Protection class | IP 21 |
| Load Capacity | 10L (H ₂ O) | Time Setting | Continuous operation |
| Motor Type | DC Motor | Dimensions (W x D x H) | 248 x 156 x 92 mm |
| Plate Material | Enamel coated stainless steel plate | Weight | 1.5kg |
| Plate Diameter | 140 mm | Power Consumption | 15W |

Ordering Information

Cat. No. Description

| | |
|---------|-------------------------------------|
| CRS-21A | CAPPRondo Analogue Magnetic Stirrer |
|---------|-------------------------------------|

Scope of Delivery

| |
|---------------------------------|
| 1 pc. Analogue Magnetic Stirrer |
| 1 pc. Stirring Bar |
| 1 pc. User Manual |
| 1 pc. Warranty Card |

CAPP Rondo

MAGNETIC HOTPLATE STIRRER

The CAPP Rondo Magnetic Hotplate Stirrer has a load capacity of 10 litres and comes with a ceramic-coated stainless steel plate and a powerful motor, enabling it to deliver constant speed even under varying load conditions.



Features

- Microprocessor-controlled, ensuring precise, stable and reliable operation for consistent performance
 - To increase user comfort, the CAPP Rondo Magnetic Hotplate Stirrer is equipped with a large display that clearly presents all critical parameters, ensuring easy visibility and seamless operation
 - This stirrer has an ultra-compact design, making it an excellent space-saving solution for your laboratory bench without compromising functionality
 - Keypad lock to prevent accidental changes of parameters
- Accessories included - CRS-21H-P (temperature probe) and CRS-21H-S (stand)

Specifications

| | | | |
|--------------------------|--|-------------------------------|---------------------------|
| Speed | 200- 2200 RPM, in steps of 10 RPM | Time Setting | 1-999 mins and continuous |
| Load Capacity | 10L (H2O) | Pulse Mode | Yes |
| Motor Type | DC | Digital Display | Yes |
| Plate Material | Stainless steel top with ceramic coating | Dimensions (W x D x H) | 156 x 248 x 104 mm |
| Plate Diameter | 140 mm | Weight | 2.0kg |
| Temperature Range | from Ambient to 320°C | Power Consumption | 620 W |
| Protection Class | IP 21 | | |

Ordering Information

| Cat. No. | Description |
|----------|--|
| CRS-21H | CAPPRondo Magnetic Hotplate Stirrer 2200 RPM, 320°C ceramic, 220V |

Scope of Delivery

| |
|---------------------------------|
| 1 pc. Magnetic Hotplate Stirrer |
| 1 pc. Temperature Probe |
| 1 pc. Probe Attachment Stand |
| 1 pc. Power Cord |
| 1 pc. Stirring Bar |
| 1 pc. User Manual |
| 1 pc. Warranty Card |

The CAPP Rondo Hotplate Stirrer is packed with a ton of useful improvements designed to make scientists more productive and efficient in their liquid handling protocols.

Features

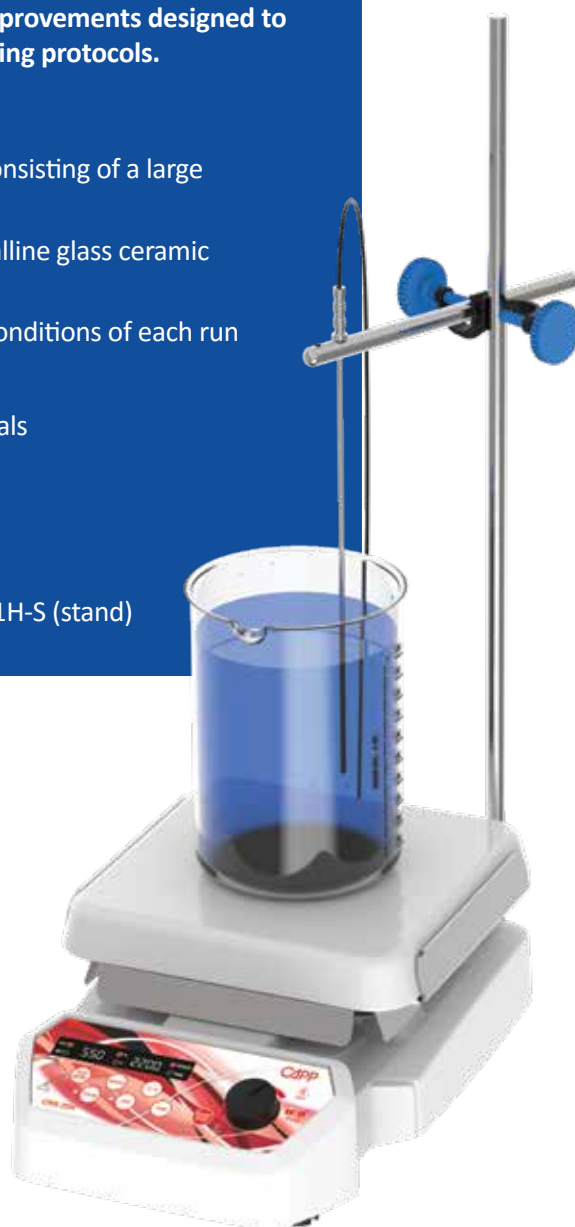
- Equipped with an intuitive microprocessor-driven control panel consisting of a large digital display, touch buttons and smooth rotational dial
- Heating plate with long-lasting and chemical-resistant nano-crystalline glass ceramic coating provides a constant heat transfer
- Six intelligent heating modes facilitate regulation of the thermal conditions of each run
- Powerful motor ensures constant speed with changing loads
- Highly resistant and solid body, can even withstand strong chemicals
- Functions - last run memory / programmable puls mode
- Small footprint to save valuable bench space
- Keypad lock to prevent accidental changes of parameters
- Accessories included - CRS-21H-P (temperature probe) and CRS-21H-S (stand)

Specifications

| | |
|------------------------------------|---|
| Speed | 200-2200 RPM in 10 RPM steps |
| Load Capacity | 20L (H ₂ O) |
| Heating Temperature Range | Ambient to 550°C (±1°C) |
| Safety Temperature Limit | 575°C |
| Plate Material | Nano-crystalline glass ceramic |
| Plate Dimensions | 180 x 180 mm |
| Over-temperature Protection | Yes |
| Time Setting | 1 to 999 min and infinite |
| Pulse Mode | Yes, programmable with run-pause-run function |
| Recommended Stir Bar Length | 25 mm |
| Protection Class | IP 21 |
| Dimensions (W x D x H) | 313 x 205 x 110 mm |
| Weight | 4.9kg |
| Power Consumption | 1000 W |

Ordering Information

| Cat. No. | Description |
|----------|--|
| CRS-22H | CAPPRondo Hotplate Stirrer 2200 RPM, 550°C ceramic, 220V |



Scope of Delivery

| |
|------------------------------|
| 1 pc. Hotplate Stirrer |
| 1 pc. Temperature Probe |
| 1 pc. Probe Attachment Stand |
| 1 pc. Power Cord |
| 1 pc. Stirring Bar |
| 1 pc. User Manual |
| 1 pc. Warranty Card |

CAPP Rondo Tube Roller ensures efficient mixing of blood samples, viscous substances and liquid-solid suspensions. The programmable pulse mode feature with Run-Pause-Run motion and variable time setting from 30 to 99 seconds, gives the user additional flexibility and improves the mixing process.

Features

- With a focus on increased user comfort and minimising the risk of contamination, CAPP Rondo Tube Roller has easily removable and autoclavable rollers
- Compact footprint will optimise your bench space
- CAPP Rondo Tube Roller is also suitable for use in incubators in temperatures up to 40°C and humidity up to 80%
- Adjustable roller spacing to accommodate different tube diameters
- Allows the user to set up to 9 user-defined programs for optimised user comfort
- Circular movement for gentle mixing with a tilt angle of 3 degrees



Specifications

| | | | |
|------------------------|---------------------------------|-------------------------------|---|
| Speed | 10 to 80 RPM, in steps of 1 RPM | Removable Rollers | Yes |
| Speed Accuracy | ± 5 RPM | Tilt Angle | +/-3° |
| Motor | Brushless DC motor | Protection Class | IP21 |
| Motion | Rocking and rolling | Pulse Mode | Yes, programmable with run-pause-run function |
| Load Capacity | 2kg | Dimensions (W x D x H) | 505 x 293 x 90 mm |
| Number Of Tubes | Up to 15 x 7mL blood tubes | Weight | 5.5kg |
| Time Setting | 1 to 99 mins and infinite | Power Consumption | 6 W |
| Operation Type | Continuous and timed operation | | |

Ordering Information

| Cat. No. | Description |
|----------|------------------------------|
| CRR-08X | CAPPRondo Tube Roller 80 RPM |

Scope of Delivery

| |
|---------------------|
| 1 pc. Tube Roller |
| 1 pc. Power Adaptor |
| 1 pc. User Manual |
| 1 pc. Warranty Card |

CAPP Rondo

DISC TUBE ROTATOR



The advanced CAPP Rondo Disc Tube Rotator is designed for optimal performance, drawing on extensive research and valuable user feedback. Equipped with a maintenance-free BLDC motor, this rotator delivers quiet, efficient, and reliable operation.

Features

- Microprocessor-controlled, offering intelligent performance that includes a convenient last run memory feature for added ease of use
- Allows up to 9 user-defined programs for optimised user comfort
 - A digital display is included for convenient and easy-to read monitoring of all operational parameters, enhancing usability
 - The rotator's angle can be adjusted from 0° to 90°, to accommodate a wide range of experimental preferences



2 mL



15 mL



50 mL

Specifications

| | |
|---|--|
| Speed | 10-80 RPM, in steps of 1 RPM |
| Speed Accuracy | ± 1 RPM |
| Motor | BLDC motor |
| Load Capacity | Up to 2kg |
| Capacity (supplied with one chosen disc plate) | 12 tubes x 50 mL 24 tubes x 15 mL 44 tubes x 2 mL |
| Time Setting | 1-99 mins and infinite |
| Pulse Mode | Yes, clockwise and anticlockwise motion with 2 sec stops |
| Protection class | IP 21 |
| Digital Display | Yes |
| Dimensions (W x D x H) | 383 x 325 x 325 mm |
| Weight | 4.5 kg |
| Power Consumption | 4.5 W |

Scope of Delivery

| |
|-------------------------|
| 1 pc. Disc Tube Rotator |
| 1 pc. Power Adaptor |
| 1 pc. User Manual |
| 1 pc. Warranty Card |

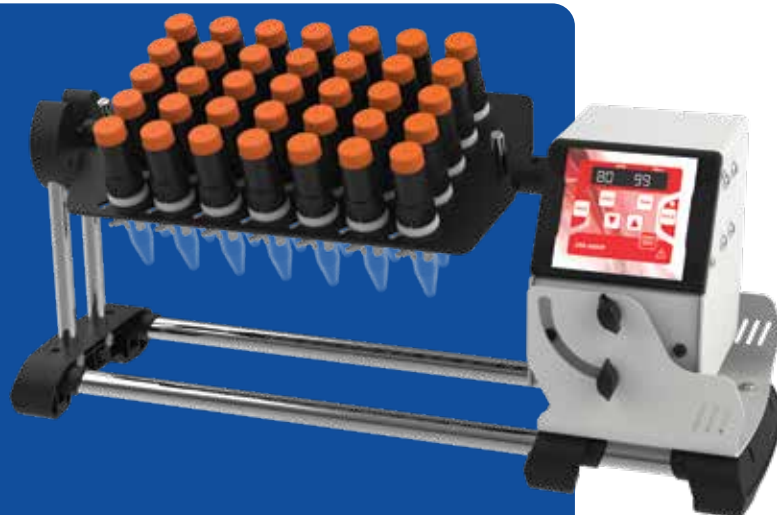
Ordering Information

| Cat. No. | Description |
|----------------|---|
| CRR-0800D | CAPPRondo Disc Tube Rotator (Order plate rotator separately) |
| CRR-0800D-D50 | 50 mL disc plate with tube holder |
| CRR-0800D-D15 | 15 mL disc plate with tube holder |
| CRR-0800D-D05 | 2 mL / 5 mL disc plate with tube holder |
| CRR-0800D-TH50 | 50 mL tube holder |
| CRR-0800D-TH15 | 15 mL tube holder |
| CRR-0800D-TH05 | 2 mL / 5 mL tube holder |
| CRR-0800D-FN | Front Nut |
| CRR-0800D-PA | Power Adaptor |

The CAPP Rondo Plate Tube Rotator delivers exceptional performance, ensuring both convenience and reliability. Equipped with a brushless DC motor that operates quietly, it requires no maintenance, and is really built to last.

Features

- With its microprocessor control, the CAPP Rondo Plate Tube Rotator allows for variable speed settings
- Users can programme and save up to 9 customised programs for efficient operation
- Supports three plate options, accommodating 16 tubes of 50 mL, 35 tubes of 15 mL, or 55 tubes of 2 mL, providing versatility for various applications
- The auto power-on feature which ensures that the rotator automatically resumes and completes the run after a power failure



Specifications

| | |
|---|--|
| Speed | 10-80 RPM, in steps of 1 RPM |
| Speed Accuracy | ± 1 RPM |
| Motor | BLDC motor |
| Load Capacity | 1.5kg |
| Capacity (supplied with any one chosen disc plate) | 16 tubes x 50 mL 35 tubes x 15 mL 55 tubes x 2 mL |
| Time Setting | 1-99 mins and infinite |
| Pulse Mode | Yes, clockwise and anticlockwise motion with 2 sec stops |
| Protection class | IP 21 |
| Angle of Disc Plate | Adjustable from 0-90 degrees |
| Digital Display | Yes |
| Dimensions (W x D x H) | 540 x 274 x 186 mm |
| Weight | 4.5kg |
| Power Consumption | 4.5 W |

Scope of Delivery

| |
|--------------------------|
| 1 pc. Plate Tube Rotator |
| 1 pc. Power Adaptor |
| 1 pc. User Manual |
| 1 pc. Warranty Card |

Ordering Information

| Cat. No. | Description |
|---------------|--|
| CRR-0800P | CAPPRondo Plate Tube Rotator 80 RPM (plate rotator must be ordered separately) |
| CRR-0800P-P50 | 50 mL plate rotator (with clamps) |
| CRR-0800P-P15 | 15 mL plate rotator (with clamps) |
| CRR-0800P-P02 | 2 mL plate rotator (with clamps) |
| CRR-0800P-C50 | 50 mL clamp |
| CRR-0800P-C15 | 15 mL clamp |
| CRR-0800P-C02 | 2 mL clamp |
| CRR-0800P-FN | Front nut |
| CRR-0800P-PA | Power adaptor |

Whether you work in a research or clinical laboratory, the compact CAPPWash Microplate Washer is the ideal washing tool for small scale immuno assays. Fitting into even the tightest budget, it is the perfect alternative to dependence on department washers for washing microplates and strips.

Features

- Performs uniformly and efficiently every time
- Washing is simple – lower the tubes into the well, push the knob to fill and release the knob to empty. Repeat for desired number of washings and move on to the next row
 - Matches all well types – the washer can be set to the desired depth by simply adjusting the two finger screws found on either side of the tubes
 - CAPPWash is available in 8-channel, 12-channel and 16-channel models
- Produced from high-grade stainless steel and polypropylene, the washer is fully autoclavable as well as highly resistant to aggressive chemicals.
- Unique two-in-one design whereby each tube consists of an inner tube that releases the distilled water washing solution into the wells for rinsing, while the outer tube vacuums away the liquid upon completion of the washing procedure
 - The vacuum pump is available for 115V and 230V connections
 - No programming required
 - No electrical wiring connection



Ordering Information

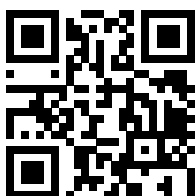
| Cat. No. | Description |
|----------|---|
| W-8 | CAPPWash 8-channel |
| W-12 | CAPPWash 12-channel |
| W-16 | CAPPWash 16-channel |
| WP-115V | Vacuum pump 115V |
| WP-230V | Vacuum pump 230V |
| WB-1 | Bottle for washing solution |
| WB-3 | Waste collection bottle |
| WB-4 | Vacuum trap |
| WB-1000 | Silicon Tubing (1 metre). Recommended to order 3 metres |

Handwriting practice lines consisting of 28 horizontal dotted lines.



AHN Biotechnologie GmbH
Uthleber Weg 14
99734 Nordhausen
Germany
Tel. +49 (0) 3631 65242-0
Fax. +49 (0) 3631 65242-90
contact@ahn-bio.com

www.ahn-bio.com



Distributed by

