

CAPP[®]

Catalogue 2026

LIQUID HANDLING

LAB CONSUMABLES

BENCHTOP EQUIPMENT

Index

LIQUID HANDLING

| | | | |
|---|----|----------------------------------|----|
| CAPP Ecopipette Single Channel Pipettes | 6 | CAPP Maestro Electronic Pipettes | 17 |
| CAPP Solo Single Multichannel Pipettes | 8 | CAPP Tempo Pipette Controller | 18 |
| CAPP Bravo Single Multichannel Pipettes | 10 | CAPP Forte Bottle-top Dispenser | 19 |
| CAPP Aero384 Multichannel Pipettes | 12 | | |
| CAPP Aero96 Multi Channel Pipettes | 13 | | |
| CAPP Microbiology Single Channel Pipettes | 14 | | |
| Pipette Accessories | 15 | | |

LAB CONSUMABLES

| | | | |
|---------------------------|----|------------------------|----|
| Pipette Filter Tips | 20 | Centrifuge Tubes | 30 |
| Bulk Pipette Tips | 21 | PCR Tubes PCR Strips | 31 |
| Racked Tips | 22 | Petri Dishes | 32 |
| Reload System | 24 | Reagent Reservoirs | 33 |
| PaperBox | 26 | Cryo Tubes | 35 |
| Individually Wrapped Tips | 28 | Cryo Boxes | 36 |
| Microcentrifuge Tubes | 29 | Serological Pipettes | 38 |

Index

BENCHTOP EQUIPMENT

| | | | |
|----------------------------|----|---------------------------|----|
| Mini Vortex Mixer | 39 | Platform Shaker | 55 |
| Vortex Mixer | 40 | Single Plate Shaker | 56 |
| Microcentrifuge | 41 | 4-Place Plate Shaker | 57 |
| High Speed Mini Centrifuge | 42 | 4-Place Incubating Shaker | 58 |
| PCR Plate Centrifuge | 43 | 3D Shaker | 59 |
| Refrigerated Centrifuge | 44 | Magnetic Stirrers | 60 |
| Lab Centrifuge | 48 | Hotplate Stirrer | 62 |
| Clinical Centrifuges | 50 | Tube Roller | 64 |
| Universal Centrifuge | 52 | Tube Rotators | 65 |
| Gel Card Centrifuge | 54 | Microplate Washer | 67 |

Certification

We use state-of-the-art energy-efficient technology to manufacture eco-friendly products with minimal environmental impact. Sustainability drives every step, from sourcing green materials to durable designs and recyclable packaging.

As a Green Dot-certified company, we're part of a Europe-wide recycling initiative, making it easy for our German customers to recycle through the national system.



EVN
Der Energiedienstleister

Green electricity certificate

for the supply of 100% green electricity from hydropower plants for AHN Biotechnologie GmbH in calendar year 2024 (1.0 million kWh/year).



There are no CO₂ emissions during electricity production.

Proof of the allocation of the green electricity quantities is provided by Energieversorgung Nordhausen GmbH after delivery in the Guarantee of Origin Register of the Federal Environment Agency in Dessau/Roßlau.

Nordhausen
Energieversorgung Nordhausen GmbH

This devolution of guarantees of origin complies with the legal requirements for electricity labelling in accordance with § 42 of the Energy Industry Act. Accordingly, an electricity supplier must use guarantees of origin for directly marketed "other renewable energies" that have not been financed by the EEG surcharge and validate them at the Federal Environment Agency. The Register of Guarantees of Origin at the Federal Environment Agency implements the requirements of EU Directive 2009/28/EC in Germany Article 15 of that directive requires Member States to establish an electronic register of electricity from renewable energy sources. The Renewable Energy Sources Act entrusts this task to the Federal Environment Agency (§ 79 EEG 2017). The Guarantees of origin are validated for AHN Biotechnologie GmbH by Energieversorgung Nordhausen GmbH.




Confirmation

Ahn Biotechnologie GmbH
Uthleber Weg 14
D-99734 Nordhausen

Customer no. | Reg.no.: DE4909522176878

We herewith confirm the participation of your packaging according to § 7 para. 1 VerpackG in our system for the year 2024.

The presentation of this certificate to your customers and business partners ensures transparency about the proper participation of your packaging within the framework of the Packaging Act.



13.03.2024 date
Jörg Deppmeyer Managing Director
Dr. Markus Helfwes Managing Director



Certificate

Quality Management System
EN ISO 13485:2016
EN ISO 13485:2016/AC:2018
EN ISO 13485:2016/A1:2021

Registration No.: SX 1830807-1
Certificate Holder: AHN Biotechnologie GmbH
Uthleber Weg 14
99734 Nordhausen
Germany

Scope: Design & development, production and distribution of plastic injection moulding components for medical devices in the field of molecular systems for the detection and identification of human DNA and RNA

The Certification Body of TÜV Rheinland LGA Products GmbH certifies that the organization has established and applies a quality management system for medical devices. Proof has been furnished that the requirements specified in the abovementioned standard are fulfilled. The quality management system is subject to yearly surveillance.

Report No.: 1152479-40
Effective date: 2025-03-09
Expiry date: 2028-03-08
Issue date: 2025-03-09

A. Fechner
Dipl.-Ing. A. Fechner
TÜV Rheinland LGA Products GmbH
Tillystraße 2 - 90451 Nürnberg - Germany

This certificate can be validated on <https://www.tuev.com>




177

CERTIFICATE



for the management system according to ISO 9001:2015

The proof of the conforming application with the regulation was furnished and in accordance with certification procedure it is certified for the company

AHN

Biotechnologie GmbH

AHN Biotechnologie GmbH
Uthleber Weg 14, 99734 Nordhausen / Germany

Scope: **Development, manufacturing and sale of laboratory products, especially for molecular biology**

Certificate Registration No.: TIC 15 100 85535 Valid until: 2026-05-07
Valid from: 2023-05-08

Audit Report No.: 3330 24AH P0

This certification was conducted in accordance with the TIC auditing and certification procedures and is subject to regular surveillance audits.

Michael
TUV Thüringen e.V.
Certification body for systems and personnel

Jena, 2023-04-06






Sustainability

We model our commitment to sustainable production through our environmentally-friendly manufacturing practices and products.

We have a wide range of sustainable laboratory consumables expertly crafted to help you reach your sustainability goals while practicing excellent science



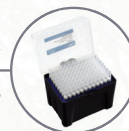
100%
electrical injection moulding

= 40% less electricity consumption compared to hydraulic machines



100%
recycled plastic

in production of CAPP rack boxes



100%
reusable racks

suitable for multiple autoclaving cycles



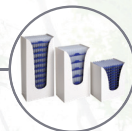
65%
space saved

when using a reload system
- reducing packaging and transport



59%
plastic saved

when using a reload system



Zero
additional plastic ingredients

packs, inserts and reloads are made entirely from recyclable polypropylene



Unlimited
upcycling options

for reusing tip racks as storage solutions



SINGLE CHANNEL PIPETTES

Each eco pipette is carefully manufactured to high standards to extend its useful life and minimise the environmental impact of frequent disposal of laboratory pipettes. Featuring an interchangeable counter mechanism, which is unique to the eco pipette, users can quickly switch between different volume capacities without having to change their pipette. This helps to protect the environment as fewer pipettes are needed.



Features

- Robust design includes metal tip base
- Interchangeable fixed and variable counter-mechanism
- Double O-rings for optimal tip seal and universal compatibility with broad range of tips
- Fully autoclavable pipette body, except volume knob
- Easy volume control through volume controller that requires 50% fewer turns
- Lockable volume controller
- Display is fully visible during hand-held operations
- Reduced need for force during aspiration and dispensing
- Large ejection pad for easy tip ejection
- Colour-coded pipette counter for quick selection of correct volume for liquid transfer



Double O-ring



Metal components



Interchangeable volume knobs



Ordering Information

eco pipette Single Channel Pipettes - Variable Volume

| Cat. No. | Channel | Volume | Increments | Inaccuracy % | Imprecision % | Colour |
|----------|---------|----------------------------|------------|--------------|---------------|--------|
| C02-1S | 1 | 0.2-2 µL | 0.02 µL | 12.00 / 2.00 | 6.00 / 1.00 | ● |
| C02-1 | 1 | 0.2-2 µL (length as C10-1) | 0.02 µL | 12.00 / 2.00 | 6.00 / 1.00 | ● |
| C10-1 | 1 | 0.5-10 µL | 0.1 µL | 2.50 / 1.00 | 1.80 / 0.50 | ○ |
| C20-1 | 1 | 2-20 µL | 0.2 µL | 5.00 / 1.00 | 1.50 / 0.30 | ● |
| C50-1 | 1 | 5-50 µL | 0.5 µL | 2.00 / 1.00 | 1.20 / 0.30 | ● |
| C100-1 | 1 | 10-100 µL | 1.0 µL | 2.50 / 0.70 | 1.00 / 0.20 | ● |
| C200-1 | 1 | 20-200 µL | 2.0 µL | 2.50 / 0.60 | 0.70 / 0.20 | ● |
| C1000-1M | 1 | 100-1000 µL | 2.0 µL | 2.00 / 0.80 | 0.60 / 0.20 | ● |
| C5000-1M | 1 | 0.5-5 mL | 10.0 µL | 1.20 / 0.60 | 0.30 / 0.15 | ● |
| C10000-1 | 1 | 1-10 mL | 20.0 µL | 3.00 / 0.60 | 0.60 / 0.15 | ● |

eco pipette Starter Kits

| Cat. No. | Description |
|-----------|--|
| SK-03-E01 | CAPP ecopipette Starter Kit: C10-1 / C100-1 / C1000-1 pipettes, C-05 stand and 3 racks of tips |
| SK-03-E02 | CAPP ecopipette Starter Kit: C20-1 / C200-1 / C1000-1 pipettes, C-05 stand and 3 racks of tips |



Interchangeable knobs

Ordering information can be found on pages 15-16



CAPP Solo Pipettes are cost effective and robust liquid-handling tools, designed for research, clinical and academic laboratories. They are available as single and multichannel pipettes.

Features

- Very light pipette chassis reduces risk of repetitive strain injuries
- Fine-tuned to ensure high level of pipetting accuracy, precision and long-term calibration stability
- Lock counter-mechanism prevents accidental rotation while pipetting
- Exchangeable colour inserts for easy identification of pipettes by user or volume capacities
- Crafted to withstand the toughest laboratory conditions, including chemical exposure, dropping and autoclaving





Ordering Information

CAPP Solo Single Channel Pipette - Variable Volume

| Cat. No. | Channel | Volume | Increments | Inaccuracy % | Imprecision % |
|----------|---------|-----------------|--------------|----------------|-----------------|
| S2-1 | 1 | 0.1-2.5 μ L | 0.01 μ L | 12.0 % / 2.5 % | 6.00 % / 1.60 % |
| S10-1 | 1 | 0.5-10 μ L | 0.1 μ L | 2.5 % / 1.0 % | 1.50 % / 0.80 % |
| S20-1 | 1 | 2-20 μ L | 0.1 μ L | 3.0 % / 0.9 % | 2.00 % / 0.40 % |
| S50-1 | 1 | 5-50 μ L | 0.5 μ L | 2.0 % / 0.6 % | 2.00 % / 0.30 % |
| S100-1 | 1 | 10-100 μ L | 0.5 μ L | 3.0 % / 0.8 % | 1.50 % / 0.15 % |

CAPP Solo Single Channel Pipette - Variable Volume

| Cat. No. | Channel | Volume | Increments | Inaccuracy % | Imprecision % |
|---|---------|-------------|------------|---------------|-----------------|
| S200-1 | 1 | 20-200 µL | 1.0 µL | 2.0 % / 0.6 % | 0.80 % / 0.15 % |
| S1000-1 | 1 | 100-1000 µL | 5.0 µL | 2.0 % / 0.6 % | 0.70 % / 0.20 % |
| S5000-1 | 1 | 0.5-5 mL | 50. µL | 2.0 % / 0.5 % | 0.60 % / 0.15 % |
|  S5000-1-N* | 1 | 0.5-5 mL | 50. µL | 2.0 % / 0.5 % | 0.60 % / 0.15 % |
| S10000-1 | 1 | 1-10 mL | 100.0 µL | 3.0 % / 0.6 % | 0.60 % / 0.20 % |
|  S10000-1-N* | 1 | 1-10 mL | 100.0 µL | 3.0 % / 0.6 % | 0.60 % / 0.20 % |

*With updated Tip cone design

CAPP Solo Single Channel Pipette - Fixed Volume

| Cat. No. | Channel | Volume | Increments | Inaccuracy % | Imprecision % |
|-----------|---------|---------|------------|--------------|---------------|
| S5-1F | 1 | 5 µL | - | 1.3 % | 1.20 % |
| S10-1F | 1 | 10 µL | - | 0.8 % | 0.80 % |
| S20-1F | 1 | 20 µL | - | 0.6 % | 0.50 % |
| S25-1F | 1 | 25 µL | - | 0.5 % | 0.30 % |
| S50-1F | 1 | 50 µL | - | 0.5 % | 0.30 % |
| S100-1F | 1 | 100 µL | - | 0.5 % | 0.30 % |
| S200-1F | 1 | 200 µL | - | 0.4 % | 0.20 % |
| S250-1F | 1 | 250 µL | - | 0.4 % | 0.20 % |
| S500-1F | 1 | 500 µL | - | 0.3 % | 0.20 % |
| S1000-1F | 1 | 1000 µL | - | 0.3 % | 0.20 % |
| S2000-1F | 1 | 2 mL | - | 0.3 % | 0.15 % |
| S2500-1F | 1 | 2.5 mL | - | 0.3 % | 0.15 % |
| S5000-1F | 1 | 5 mL | - | 0.3 % | 0.15 % |
| S10000-1F | 1 | 10 mL | - | 0.6 % | 0.20 % |

CAPP Solo Single Channel Pipette - Fixed Volume

| Cat. No. | Channel | Volume | Increments | Inaccuracy % | Imprecision % |
|----------|---------|-------------|------------|--------------|---------------|
| S10-8 | 8 | 0.5 – 10 µL | 0.1 µL | 4.0 %/1.5 % | 4.00 %/1.50 % |
| S100-8 | 8 | 10 – 100 µL | 0.5 µL | 3.0 %/1.0 % | 2.00 %/0.70 % |
| S300-8 | 8 | 30 – 300 µL | 1.0 µL | 1.5 %/0.8 % | 0.75 %/0.25 % |
| S10-12 | 12 | 0.5 – 10 µL | 0.1 µL | 4.0 %/1.5 % | 4.00 %/1.50 % |
| S100-12 | 12 | 10 – 100 µL | 0.5 µL | 3.0 %/1.0 % | 2.00 %/0.70 % |
| S300-12 | 12 | 30 – 300 µL | 1.0 µL | 1.5 %/0.8 % | 0.75 %/0.25 % |

CAPP Solo Starter Kit

| Cat. No. | Description |
|-----------|--|
| SK-03-S01 | 3 pipettes S10-1 /S100-1 /S1000-1, C-05 stand, 3 racks of tips |
| SK-03-S02 | 3 pipettes S20-1 /S200-1 /S1000-1, C-05 stand, 3 racks of tips |

*Only multichannel pipettes have a metal cone

SINGLE | MULTI CHANNEL PIPETTES

CAPP Bravo pipettes combine lightweight ergonomic design, and the utmost accuracy and precision in an affordable package

Features

- Ultra lightweight construction
- Metallic piston results in accurate liquid dispensing, delivering consistent, reliable results across all channels
- Built-in oversized volume indicator simplifies volume monitoring and makes precise adjustment particularly easy
- Durable construction ensures chemical resistance, thermal stability and resilience from accidental bumps or damage
- Long-term calibration retention, even after sterilising in an autoclave
- Metal shaft with double O-rings for all multichannel volumes and 0.1-2 μ L, 0.5-10 μ L, 2-20 μ L single channel volumes
- Coloured caps and identification stickers enable the easy visual identification of pipettes or volume capacities



Ordering Information

CAPP Bravo Single Channel Pipettes - Variable Volume

| Cat. No. | Channel | Description | Increments | Inaccuracy % | Imprecision % | Colour |
|----------|---------|----------------|--------------|--------------|---------------|--------|
| B02-1 | 1 | 0.1-2 μ L | 0.01 μ L | 12.00 / 2.00 | 6.00 / 1.00 | ● |
| B10-1 | 1 | 0.5-10 μ L | 0.02 μ L | 2.50 / 1.00 | 1.80 / 0.50 | ○ |
| B20-1 | 1 | 2-20 μ L | 0.02 μ L | 5.00 / 1.00 | 1.50 / 0.30 | ● |
| B50-1 | 1 | 5-50 μ L | 0.1 μ L | 2.00 / 1.00 | 1.20 / 0.30 | ● |

CAPP Bravo Single Channel Pipettes - Variable Volume

| Cat. No. | Channel | Description | Increments | Inaccuracy % | Imprecision % | Colour |
|----------|---------|-------------|------------|--------------|---------------|--------|
| B100-1 | 1 | 10-100 µL | 0.1µL | 2.50 / 0.70 | 1.00 / 0.20 | Orange |
| B200-1 | 1 | 20-200 µL | 0.2µL | 2.50 / 0.60 | 0.70 / 0.20 | Yellow |
| B1000-1 | 1 | 100-1000 µL | 1.0µL | 2.00 / 0.80 | 0.60 / 0.20 | Blue |
| B5000-1 | 1 | 1-5 mL | 10.0µL | 1.20 / 0.60 | 0.30 / 0.15 | Green |
| B10000-1 | 1 | 1-10 mL | 20.0µL | 3.00 / 0.60 | 0.60 / 0.15 | Green |

CAPP Bravo Single Channel Pipettes - Fixed Volume

| Cat. No. | Channel | Description | Increments | Inaccuracy % | Imprecision % | Colour |
|-----------|---------|-------------|------------|--------------|---------------|--------|
| B01-1F | 1 | 1 µL | - | 2.50 | 1.80 | Purple |
| B02-1F | 1 | 2 µL | - | 2.00 | 1.00 | Purple |
| B05-1F | 1 | 5 µL | - | 1.20 | 0.80 | White |
| B10-1F | 1 | 10 µL | - | 1.00 | 0.50 | White |
| B20-1F | 1 | 20 µL | - | 1.00 | 0.30 | Black |
| B50-1F | 1 | 50 µL | - | 1.00 | 0.30 | Red |
| B100-1F | 1 | 100 µL | - | 0.70 | 0.20 | Orange |
| B200-1F | 1 | 200 µL | - | 0.60 | 0.20 | Yellow |
| B500-1F | 1 | 500 µL | - | 0.80 | 0.15 | Blue |
| B1000-1F | 1 | 1000 µL | - | 0.80 | 0.20 | Blue |
| B5000-1F | 1 | 5 mL | - | 0.60 | 0.15 | Green |
| B10000-1F | 1 | 10 mL | - | 0.60 | 0.15 | Green |

CAPP Bravo Multichannel Pipettes

| Cat. No. | Channel | Description | Increments | Inaccuracy % | Imprecision % | Colour |
|---|---------|-------------|------------|--------------|---------------|--------|
|  B10-8 | 8 | 0.5-10 µL | 0.02 µL | 5.00 /2.00 | 3.60 /1.00 | White |
|  B100-8 | 8 | 10-100 µL | 0.1 µL | 2.50 /1.30 | 1.20 /0.50 | Orange |
|  B300-8 | 8 | 30-300 µL | 0.2 µL | 1.66 /1.40 | 0.60 /0.30 | Black |
|  B10-12 | 12 | 0.5-10 µL | 0.02 µL | 5.00 /2.00 | 3.60 /1.00 | Orange |
|  B100-12 | 12 | 10-100 µL | 0.1 µL | 2.50 /1.30 | 1.20 /0.50 | White |
|  B300-12 | 12 | 30-300 µL | 0.2 µL | 1.66 /1.40 | 0.60 /0.30 | Black |

CAPP Bravo Starter Kits

| Cat. No. | Description |
|-----------|--|
| SK-03-B01 | Starter Kit including B10-1 / B100-1 / B1000-1 pipettes, C-05 stand, 3 racks of tips |
| SK-03-B02 | Starter Kit including B20-1/B200-1/B1000-1 pipettes, C-05 stand, 3 racks of tips |



Aero384

MULTICHANNEL PIPETTES

CAPP Aero384 is the ideal multichannel pipette for 384-well plates, enabling fast, precise pipetting of 16, 48 or 64 wells simultaneously, as well as in one row with the 24- and 32-channel pipettes and no need for expensive automated equipment.

Features

- High-quality metal shaft and piston assembly designed for enhanced resistance to everyday laboratory conditions
- Metallic construction of the piston assembly results in accurate and precise performance across all channels
- Easy volume adjustment through controller that requires 50% fewer turns
- Colour-coded pipette counter for quick volume selection for liquid transfer
- Ergonomic tip ejection lever with minimal thumb effort required to offload tips
- Interchangeable fixed and variable counter-mechanism
- Fully autoclavable pipette body, except volume knob
- Display is fully visible during hand-held operations
- Lightweight ergonomic construction
- Lockable volume controller



Ordering Information

CAPP Aero 384 Multichannel Pipettes - Variable Volume

| Cat. No. | Channel | Description | Inaccuracy % | Imprecision % | Colour |
|----------|---------|-------------|--------------|---------------|--------|
| C02-16 | 16 | 0.2-2 µL | 4.00 | 2.00 | ● |
| C10-16 | 16 | 0.5-10 µL | 2.00 | 1.00 | ○ |
| C50-16 | 16 | 5-50 µL | 1.40 | 0.60 | ● |
| C10-24 | 24 | 0.5-10 µL | 2.00 | 1.00 | ○ |
| C50-24 | 24 | 5-50 µL | 1.40 | 0.60 | ● |
| C10-32 | 32 | 0.5-10 µL | 4.00 | 2.00 | ○ |
| C10-48 | 48 | 0.5-10 µL | 4.00 | 2.00 | ○ |
| C10-64 | 64 | 0.5-10 µL | 4.00 | 2.00 | ○ |

EXPelIPlus 384, Low Retention, Racked / Filter Tips

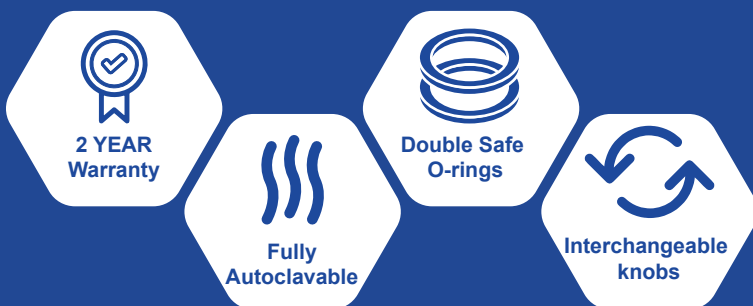
| Cat. No. | Description |
|----------|--|
| 5030005C | EXPelIPlus 0.2-50 µL, long, racked, sterile, 5x10x384 pcs. |
| 5030006C | EXPelIPlus 0.2-50 µL, long, racked, sterile, filtered, 5x10x384 pcs. |

MULTICHANNEL PIPETTES

The CAPP Aero96 multichannel pipette combines the accuracy and precision of a single-channel pipette across all channels with ergonomic aspects that minimise thumb strain, a common cause of repetitive stress injuries during multichannel pipetting.

Features

- External ejection lever reduces thumb strain for easier tip mounting and ejection
- Double O-rings ensure tip placement on nose cone requires only light pressure
- Lightweight ergonomic construction
- Robust design through aluminium and metal tip cones
- Stainless steel pistons ensure stability and a constantly reliable, precise performance
- Colour-coded pipette counter for quick selection of the right volume for liquid transfer
- Interchangeable fixed and variable counter-mechanism
- Fully autoclavable pipette body, except volume knob
- Easy volume control through volume controller that requires 50% fewer turns
- Lockable volume controller
- Display is fully visible during hand-held operations



Ordering Information

CAPP Aero 96 Multichannel Pipettes - Variable Volume

| Cat. No. | Channel | Description | Increments | Inaccuracy % | Imprecision % | Colour |
|----------------|---------|-------------|------------|--------------|---------------|--------|
| C10-8 | 8 | 0.5-10 µL | 0.1 µL | 5.00 /2.00 | 3.60 /1.00 | ○ |
| C20-8 | 8 | 2-20 µL | 0.2 µL | 5.00 /2.00 | 3.60 /1.00 | ● |
| C50-8 | 8 | 5-50 µL | 0.5 µL | 3.20 /1.40 | 1.60 /0.60 | ● |
| C100-8 | 8 | 10-100 µL | 1.0 µL | 2.50 /1.30 | 1.20 /0.50 | ● |
| C200-8 | 8 | 20-200 µL | 2.0 µL | 1.80 /1.20 | 0.80 /0.40 | ● |
| C300-8 | 8 | 30-300 µL | 2.0 µL | 1.66 /1.40 | 0.60 /0.30 | ● |
| C10-12 | 12 | 0.5-10 µL | 0.1 µL | 5.00 /2.00 | 3.60 /1.00 | ○ |
| C20-12 | 12 | 2-20 µL | 0.2 µL | 5.00 /2.00 | 3.60 /1.00 | ● |
| C50-12 | 12 | 5-50 µL | 0.5 µL | 3.20 /1.40 | 1.60 /0.60 | ● |
| C100-12 | 12 | 10-100 µL | 1.0 µL | 2.50 /1.30 | 1.20 /0.50 | ● |
| C200-12 | 12 | 20-200 µL | 2.0 µL | 1.80 /1.20 | 0.80 /0.40 | ● |
| C300-12 | 12 | 30-300 µL | 2.0 µL | 1.66 /1.40 | 0.60 /0.30 | ● |



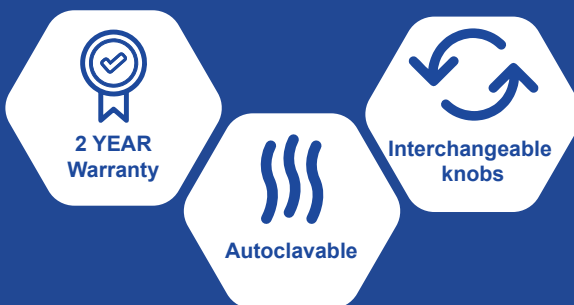
Microbiology

SINGLE CHANNEL PIPETTES

The CAPP Microbiology single channel pipette is designed for microbiology testing in the food industry, the environment and in public institutes. It is supplied with three fixed volume knobs and a modified tip cone geometry suitable for use with straw tips, enabling it to handle viscous liquids and 1:10 dilutions effortlessly and precisely.

Features

- Extended reach for convenient pipetting of difficult-to-reach samples
- Rotation-free volume selection ensures quick and easy adjustments without the risk of missetting the volume
- Pre-set calibrated volume controllers (100 µL/900µL/1000 µL) for consistent, accurate measurements
- Fully autoclavable for easy sterilisation and reuse in sterile environments
- Robust metallic construction to assure a longer durability



Ordering Information

CAPP Microbiology Single Channel Pipettes (for use with sterile straws)

| Cat. No. | Channel | Description | Increments | Inaccuracy % | Imprecision % |
|-----------|---------|-----------------|------------|--------------|---------------|
| C1000-1BS | 1 | 100/900/1000 µL | - | 1.50 / 0.80 | 1.50 / 0.40 |



CAPP Microbiology Straw Tips

| Cat. No. | Description | Volume | Length | Sales Unit |
|----------|--------------------|--------|--------|------------|
| 4170807 | Straw tip, sterile | 1.1 mL | 190 mm | 40x25 pcs |



PIPETTE ACCESSORIES

CAPP offers a comprehensive selection of practical accessories to complement and enhance the functionality of its full line of pipettes.

Volume knobs

- Pre-calibrated interchangeable, variable and fixed volume knobs
- Allow users to use one pipette with many fixed volume knobs to substantially reduce cost. Now, instead of four fixed volume pipettes, for example, user can buy one CAPP pipette and four inexpensive knobs to achieve the same precise results.

Pipette Stands

- Delivers optimal storage solutions for laboratories
- Options hold between 3 and 6 mechanical pipettes

Pipette Filters

- An economical solution to eliminate “splash effects” and will substantially reduce risk of sample and shaft contamination



Ordering Information

Fixed Volume Knobs - for CAPP ecopipette, CAPP Aero 96 and CAPP Aero 384

| Cat. No. | Volume | Use with pipette volumes | Colour |
|------------|--------|--------------------------|--------|
| 02-FE-1 | 1 µL | 0.2-2 µL | Purple |
| 02-FE-2 | 2 µL | 0.2-2 µL | Purple |
| 10-FE-5 | 5 µL | 0.5-10 µL | White |
| 10-FE-10 | 10 µL | 0.5-10 µL | White |
| 20-FE-10 | 10 µL | 2-20 µL | Black |
| 20-FE-20 | 20 µL | 2-20 µL | Black |
| 50-FE-20 | 20 µL | 5-50 µL | Red |
| 50-FE-25 | 25 µL | 5-50 µL | Red |
| 50-FE-50 | 50 µL | 5-50 µL | Red |
| 100-FE-30 | 30 µL | 10-100 µL | Orange |
| 100-FE-50 | 50 µL | 10-100 µL | Orange |
| 100-FE-100 | 100 µL | 10-100 µL | Orange |

Fixed Volume Knobs for CAPP ecopipette, CAPP Aero 96 and CAPP Aero 384

| Cat. No. | Volume | Use with pipette volumes | Colour |
|----------------|--|--------------------------|--------|
| 200-FE-100 | 100 µL | 20-200 µL | Yellow |
| 200-FE-200 | 200 µL | 20-200 µL | Yellow |
| 300-FE-300 | 300 µL | 30-300 µL | Black |
| 1000-FE-50 | 50 µL | 10-50 µL | Black |
| 1000-FE-100 | 100 µL | 50-100 µL | Black |
| 1000-FE-200 | 200 µL | 10-200 µL | Blue |
| 1000-FE-500 | 500 µL | 100-1000 µL | Blue |
| 1000-FE-1000 | 1000 µL | 100-1000 µL | Blue |
| 5000-FE-1000 | 5000 µL | 1-5 mL | Green |
| 5000-FE-5000 | 5000 µL | 1-5 mL | Green |
| 10000-FE-10000 | 10000 µL | 10 mL | Green |
| XXX-FE-YYY | Other fixed volume controllers, ecopipette | | |



C-01



C-04

Variable Volume Knobs for CAPP ecopipette, CAPP Aero 96 and CAPP Aero 384

| Cat. No. | Volume | Use with pipette volumes | Increment | Colour |
|------------|---------------|--------------------------|-----------|--------|
| 2-VZ | 0.2-2 µL | 0.2-2 µL | 0.02 µL | Purple |
| 10-VZ | 0.5-10 µL | 0.5-10 µL | 0.1 µL | White |
| 20-VZ | 2-20 µL | 2-20 µL | 0.2 µL | Black |
| 50-VZ | 5-50 µL | 5-50 µL | 0.5 µL | Red |
| 100-VZ | 10-100 µL | 10-100 µL | 1.0 µL | Orange |
| 200-VZ | 20-200 µL | 20-200 µL | 2.0 µL | Yellow |
| 300-VZ / 1 | 30-200 µL | 30-300 µL | 2.0 µL | Black |
| 300-VZ | 125-300 µL | 30-300 µL | 2.0 µL | Black |
| 1000-VZ-M | 100-1000 µL | 100-1000 µL | 2.0 µL | Blue |
| 5000-VZ-M | 500-5000 µL | 500-5000 µL | 10.0 µL | Green |
| 10000-VZ-M | 1000-10000 µL | 1000-10000 µL | 20.0 µL | Green |



C-05



C-06

Pipette Stands

| Cat. No. | Description |
|----------|--|
| C-01 | Combi stand (2 modules) for up to 3 mechanical pipettes, except CAPP Bravo |
| C-04 | Pipette stand for up to 4 CAPP Maestro pipettes or all mechanical pipettes |
| C-05 | Pipette stand for up to 5 CAPP mechanical pipettes, all models |
| C-06 | Pipette stand for up to 6 CAPP mechanical pipettes, except CAPP Bravo |
| 00392-1 | Block for 4 volume controllers |

Pipette Filters

| Cat. No. | Use with pipette | Use with pipette volumes | Increment |
|---------------|------------------|--------------------------|---------------|
| C1000-1-FT | CAPP ecopipette | 100-1000 µL | Bag / 50 pcs. |
| C5000-1-FT | CAPP ecopipette | 1-5 mL | Bag / 50 pcs. |
| B510 mL-25-FT | CAPP Bravo | 1-5 mL and 1-10 mL | Bag / 25 pcs. |



00392-1

CAPP[®] Maestro

ELECTRONIC PIPETTES

CAPP Maestro electronic single channel pipettes are user-friendly digital pipettes that will optimise your serial work. They come equipped with advanced functions such as multi-dispensing, dilution and mixing.

Features

- Lightweight construction and ergonomic design with a wide hook allows you to hold the pipette in your hand, without the need to “grab” it
- Large tip ejector works as a rest for your thumb
- Fully-coloured OLED display with better contrast and a greater screen refresh rate in comparison to other LCD screens and less power consumption compared to other displays
- Optimised serial work with advanced functions such as multi-dispensing, dilution and mixing
- For routine laboratory work, you can simply save your favourite protocols and switch from one to another with just two clicks
- Calibration and password-setting functions enable you to maintain precise measurements and secure user access.
- Easy operation through the user-friendly graphic intuitive interface
- Long lasting performance through the use of lithium ion batteries



OLED display



Large tip ejector



Hook

Ordering Information

CAPP Maestro Electronic Pipettes - Variable Volume

| Cat. No. | Channel | Volume | Increments | Inaccuracy % | Imprecision % |
|----------|---------|-------------|------------|--------------|---------------|
| M10-1 | 1 | 0.2-10 µL | 0.01 µL | 2.50 / 1.00 | 1.80 / 0.50 |
| M100-1 | 1 | 5-100 µL | 0.1 µL | 2.50 / 0.70 | 1.00 / 0.20 |
| M200-1 | 1 | 10-200 µL | 0.1 µL | 2.50 / 0.60 | 0.70 / 0.20 |
| M1000-1 | 1 | 50-1000 µL | 1.0 µL | 2.00 / 0.80 | 0.60 / 0.20 |
| M5000-1 | 1 | 500-5000 µL | 5.0 µL | 2.40 / 0.60 | 0.60 / 0.15 |

BOTTLE-TOP DISPENSER

CAPP Forte bottle top dispenser is the ideal choice for handling strong and corrosive chemicals. Made of highly chemical-resistant materials, such as PTFE, PFA, borosilicate and platinum, CAPP Forte Bottle-Top Dispenser is the ideal choice for dispensing bases, acids and solvents.

Features

- Positive displacement piston is ideal for many problematic media, such as crystallising, viscous, foaming or vaporizing liquids, it removes the liquid completely through the tightly fitting piston that wipes the walls of the glass cylinder completely clean
- Unique wiping seal eliminates swelling and freezing of piston
- Locking the 3-way valve disables the dispensing function, preventing unintentional reagent flow and makes it possible to drain the system without removing the unit from the bottle
- The rapid prime system channels the reagent back into the bottle, eliminating reagent waste and increasing user safety
- Slide-and-lock volume adjustment allows an easy operation, the volume can be adjusted quickly and precisely and can be used for both left-handed and right-hand
- The discharge tube is turnable, making the bottle label visible at any time
- The telescope intake tube is easily adjustable, fitting reagent bottles without cutting
- PP-adapters for the most common bottle sizes are supplied with the instrument
- Autoclavable at 121° C / 250° F



Ordering Information

| Cat. No. | Volume |
|----------|-------------|
| CF2-1 | 0.25-2.5 mL |
| CF5-1 | 0.5-5 mL |
| CF10-1 | 1-10 mL |
| CF25-1 | 2.5-25 mL |
| CF50-1 | 5-50 mL |



Specifications

| Volume | Volume steps | Thread | Adapters GL | Accuracy % | Precision % |
|-----------------|--------------|--------|---------------|------------|-------------|
| 0.25 – 2.50 mL | 0.05 mL | GL 32 | 28, 40, 45 | 0.6% | ≤0.1% |
| 0.50 – 5.00 mL | 0.10 mL | GL 32 | 28, 40, 45 | 0.5% | ≤0.1% |
| 1.00 – 10.00 mL | 0.20 mL | GL 32 | 28, 40, 45 | 0.5% | ≤0.1% |
| 2.50 – 25.00 mL | 0.50 mL | GL 45 | 38, 40, 38/32 | 0.5% | ≤0.1% |
| 5.00 – 50.00 mL | 1.00 mL | GL 45 | 38, 40, 38/32 | 0.5% | ≤0.1% |

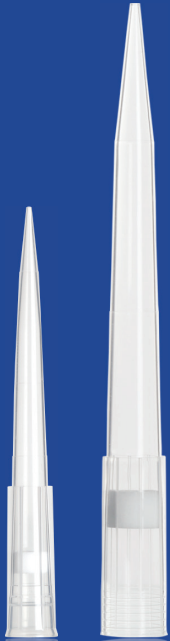


EXPellPlus | EXPell



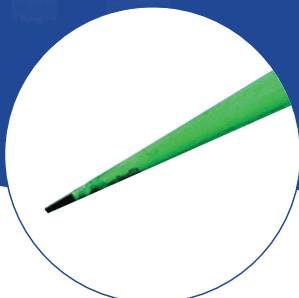
PIPETTE TIPS | FILTER TIPS

With 25+ years of expertise, CAPP manufactures pipette tips that exceed the highest standards. Our extensive range meets the diverse needs of research, diagnostics, and analytical labs —perfect for routine tasks or specialised applications.



Features

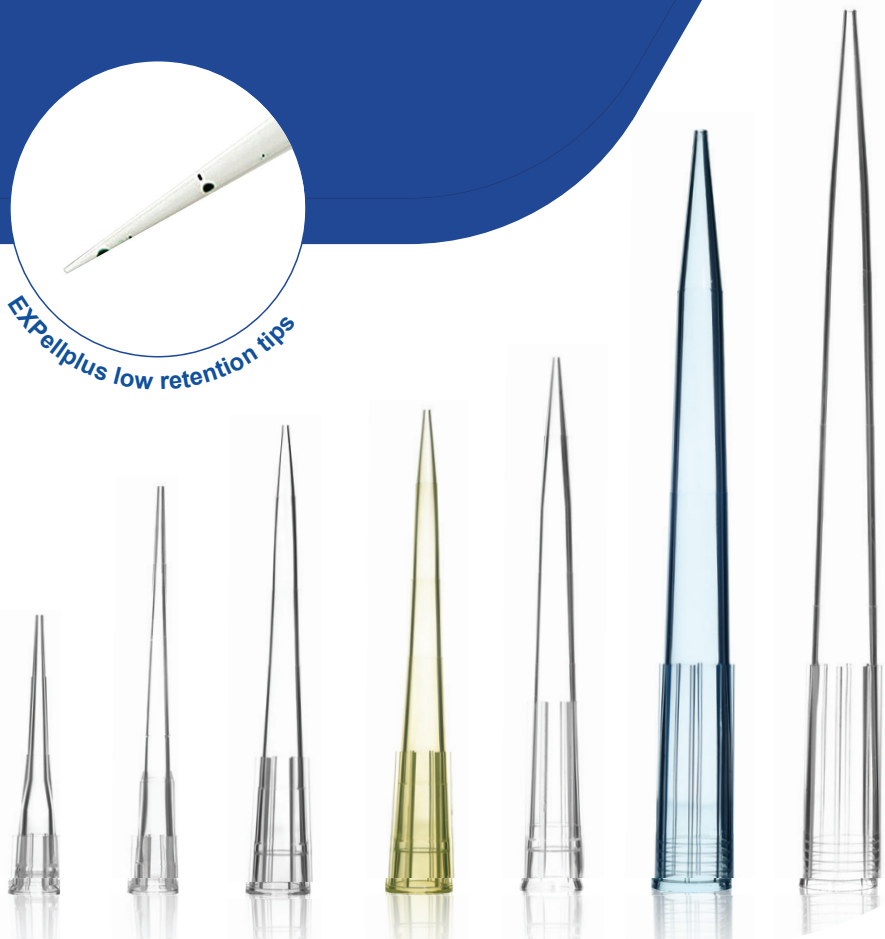
- Made from US FDA virgin polypropylene without any traces of heavy metals (FDA approved 21 CFR)
- Superb quality, Swiss-made injection molds
- Certified RNase, DNase, Human DNA, RNA and Pyrogen-free
- Universal compatibility with most pipette brands on the market
- Different lengths suitable for different applications within the same volume range
- Crystal clear, incremental marks for convenience of use
- Select from EXPellPlus Low Retention or EXPell Standard (both of premium quality)
- Options of bulk, racked, reloads and Paperbox tips
- CAPP Filter Tips are consistent in their dimensions, feature controlled pore sizes and provide reliable protection against contamination



Standard tips



EXPellPlus low retention tips



BULK PIPETTE TIPS

EXPell and EXPellPlus Bulk Pipette Tips are available in self-standing, self-sealing plastic bags, enabling comfortable usage and compact storage.

Features

- Ready-to-use tips directly from the bag or for manual refilling into all CAPP racks
- Colour-coded labels enable quick and easy identification of the pipette tip
- Cost-effective option for budget-conscious users
- Made under strict quality standards, certified RNase, DNase, Human DNA, RNA and Pyrogen-free

Did you know that ordering in bulk reduces plastic use by **665g per case?**



Ordering Information

EXPell Bulk Non-filter Tips

| Cat. No. | Description |
|----------|---|
| 5130010C | EXPell 10 µL, clear, bag, 20x1000 pcs. |
| 5130041C | EXPell 10/20 µL XL, extra narrow, clear, bag, 20x1000 pcs |
| 5130070C | EXPell 200 µL, clear, bag, 30x1000 pcs. |
| 4130075C | EXPell 200 µL, yellow, bag, 30x1000 pcs. |
| 5130100C | EXPell 300 µL, clear, bag, 10x1000 pcs. |
| 5130130C | EXPell 1000 µL, clear, bag, 20x500 pcs. |
| 4130135C | EXPell 1000 µL, blue, bag, 20x500 pcs. |
| 5130120C | EXPell 1250 µL XL, clear, bag, 20x 500 pcs. |
| 5130160C | EXPell 5000 µL, clear, bag, 10x250 pcs. |
| 5130161C | EXPell 5000 µL, clear, bag, 8x250 pcs. |
| 5130190C | EXPell 10000 µL, clear, bag, 5x200 pcs. |
| 5130191C | EXPell 10000 µL, clear, bag, 10x100 pcs. |

EXPell Bulk Filter Tips

| Cat. No. | Description |
|----------|---|
| 5131030C | EXPell 10 µL, clear, bag, 20x1000 pcs. |
| 5131061C | EXPell 10 µL XL, extra narrow, bag, 20x1000 pcs |
| 5131062C | EXPell 20 µL, bag, 10x1000 pcs. |
| 5131066C | EXPell 100 µL, bag, 10x1000 pcs. |
| 5131090C | EXPell 200 µL, bag, 10x1000 pcs. |
| 5131150C | EXPell 1000 µL, bag, 10x1000 pcs. |

EXPellPlus Bulk Non-filter Tips, Low Retention

| Cat. No. | Description |
|----------|---|
| 5030010C | EXPellPlus 10 µL, clear, bag, 20x1000 pcs. |
| 5030041C | EXPellPlus 10/20µl XL, extra narrow, clear, bag, 20x1000 pcs. |
| 5030070C | EXPellPlus 200 µL, clear, bag, 30x1000 pcs. |
| 5030130C | EXPellPlus 1000 µL, clear, bag, 20x500 pcs. |

CAPP[®] EXPellPlus | EXPell



RACKED TIPS

CAPP offers a versatile range of pipette tips in autoclavable racks packed in user-friendly and space-saving dispenser boxes.

Features

- Each dispenser box includes 10 rackboxes or 8 rackboxes (for 1000/1250 µL tips)
- Colour-coded labels enable quick and easy identification of the pipette tip
- Available with filter, non-filter, sterile and non-sterile tips
- Offered in two options: EXPell Standard and EXPellPlus low-retention quality



Why are our rack boxes black? We produce them using 100% of our own recycled plastic - for greater sustainability.

Ordering Information

EXPell Hinged Rackboxes

| Cat. No. | Description |
|----------|---|
| 5030015C | EXPell 10 µL, hinged rackboxes, 5x10x96 pcs. |
| 5030016C | EXPell 10 µL, sterile, hinged rackboxes, 5x10x96 pcs. |
| 5030046C | EXPell 10/20 µL XL, extra narrow, hinged rackboxes, 5x10x96 pcs. |
| 5030047C | EXPell 10/20 µL XL, extra narrow, sterile, hinged rackboxes, 5x10x96 pcs. |
| 5030075C | EXPell 200 µL, hinged rackboxes, 5x10x96 pcs. |
| 5030076C | EXPell 200 µL, sterile, hinged rackboxes, 5x10x96 pcs. |
| 5130105C | EXPell 300 µL, hinged rackboxes, 5x10x96 pcs. |
| 5130135C | EXPell 1000 µL, hinged rackboxes, 4x8x96 pcs. |
| 5130140C | EXPell 1000 µL, sterile, hinged rackboxes, 4x8x96 pcs. |
| 5130121C | EXPell 1250 µL XL, hinged rackboxes, 4x8x96 pcs. |
| 5130122C | EXPell 1250 µL XL, sterile, hinged rackboxes, 4x8x96 pcs. |

Ordering Information

EXPell Racked Filter Tips

| Cat. No. | Description |
|----------|--|
| 5130030C | EXPell 10 µL, sterile, w/ filter, hinged rackboxes, 5x10x96 pcs. |
| 5130061C | EXPell 10/20 µL XL, extra narrow, sterile, w/ filter, hinged rackboxes, 5x10x96 pcs. |
| 5130062C | EXPell 20 µL, sterile, w/ filter, hinged rackboxes, 5x10x96 pcs. |
| 5130066C | EXPell 100 µL, sterile, w/ filter, hinged rackboxes, 5x10x96 pcs. |
| 5130090C | EXPell 200 µL, sterile, w/ filter, hinged rackboxes, 5x10x96 pcs. |
| 5130115C | EXPell 300 µL, sterile, w/ filter, hinged rackboxes, 5x10x96 pcs. |
| 5130150C | EXPell 1000 µL, sterile, w/ filter, hinged rackboxes, 4x8x96 pcs. |
| 5130123C | EXPell 1250 µL XL, sterile w/filter, hinged rackboxes, 4x8x96 pcs. |

EXPellPlus Low Retention, Racked Filter Tips

| Cat. No. | Description |
|----------|--|
| 5030030C | EXPellPlus 10 µL, sterile, w/ filter, hinged rackboxes, 5x10x96 pcs. |
| 5030061C | EXPellPlus 10/20 µL XL, extra narrow, sterile, w/ filter, hinged rackboxes, 5x10x96 pcs. |
| 5030062C | EXPellPlus 20 µL, sterile, w/ filter, hinged rackboxes, 5x10x96 pcs. |
| 5030066C | EXPellPlus 100 µL, sterile, w/ filter, hinged rackboxes, 5x10x96 pcs. |
| 5030090C | EXPellPlus 200 µL, sterile, w/ filter, hinged rackboxes, 5x10x96 pcs. |
| 5030115C | EXPellPlus 300 µL, sterile, w/ filter, hinged rackboxes, 5x10x96 pcs. |
| 5030150C | EXPellPlus 1000 µL, sterile, w/ filter, hinged rackboxes, 4x8x96 pcs. |
| 5030123C | EXPellPlus 1250 µL XL, sterile w/filter, hinged rackboxes, 4x8x96 pcs. |

EXPellPlus 384, Low Retention, Racked / Filter Tips

| Cat. No. | Description |
|----------|--|
| 5030005C | EXPellPlus 0.2-50 µL, long, racked, sterile, 5x10x384 pcs. |
| 5030006C | EXPellPlus 0.2-50 µL, long, racked, sterile, filtered, 5x10x384 pcs. |



RELOAD SYSTEM

CAPP's EXPell Pipette Tips Reload System is designed for 10 µL 10/20 µL XL, 200 µL, 300 µL, 1000 µL tips. Depending on the volume of your chosen tip, it contains towers of 5, 8 or 10 racks containing 96 tips each.

The system is extremely easy to use. Take off the tower cover and pick up the rack with tips. Place it into the empty rack. The rack has been refilled with 96 tips.

The EXPell Reload System has multiple benefits:

- Shipping costs are significantly reduced by up to 75% of the packing volume. The tips are packed more compactly than standard racked or bulk tips.
- The tips from the upper rack are partially placed into the tips of the lower plate, resulting in a slim tower, taking much less space than a single box of 10 racked tips.
- CAPP's EXPell Reload System reduces plastic waste. Each rack can be reused multiple times and, apart from the insert plates with tips, there are no further plastic components – only the recyclable cardboard packaging.
- Thanks to the minimal footprint, the towers of the EXPell Reload System take up less space on the benchtop and in the storage room.
- The system is compatible with all CAPP racks of corresponding tip volumes.



Ordering Information

EXPell Bulk Non-filter Tips

| Cat. No. | Description |
|----------|---|
| 5030035C | EXPell 10 µL, reload tips, 10x10x96 pcs. |
| 5030055C | EXPell 10/20 µL XL, extra narrow, 10x10x96 pcs. |
| 5030095C | EXPell 200 µL, reload tips, 10x10x96 pcs. |
| 5130155C | EXPell 1000 µL, reload tips, 10x5x96 pcs. |

Cleaner, greener transport

– Reducing our carbon footprint

Over the past few years, we have worked hard to hone our expertise in sustainable production, striving to reduce our environmental footprint at every stage of our process, and one significant challenge we have successfully addressed is the optimisation of product shipping.

With our revolutionary reload system, we have saved an impressive **65% reduction** in shipping space per consignment, allowing for more efficient transportation and reducing our environmental impact.

Consequently, this has reduced our overall carbon footprint in shipping and other transportation.

Of course, this innovative system also frees up valuable benchtop space in your laboratory!



CAPP[®] EXPellPlus | EXPell

PAPERBOX



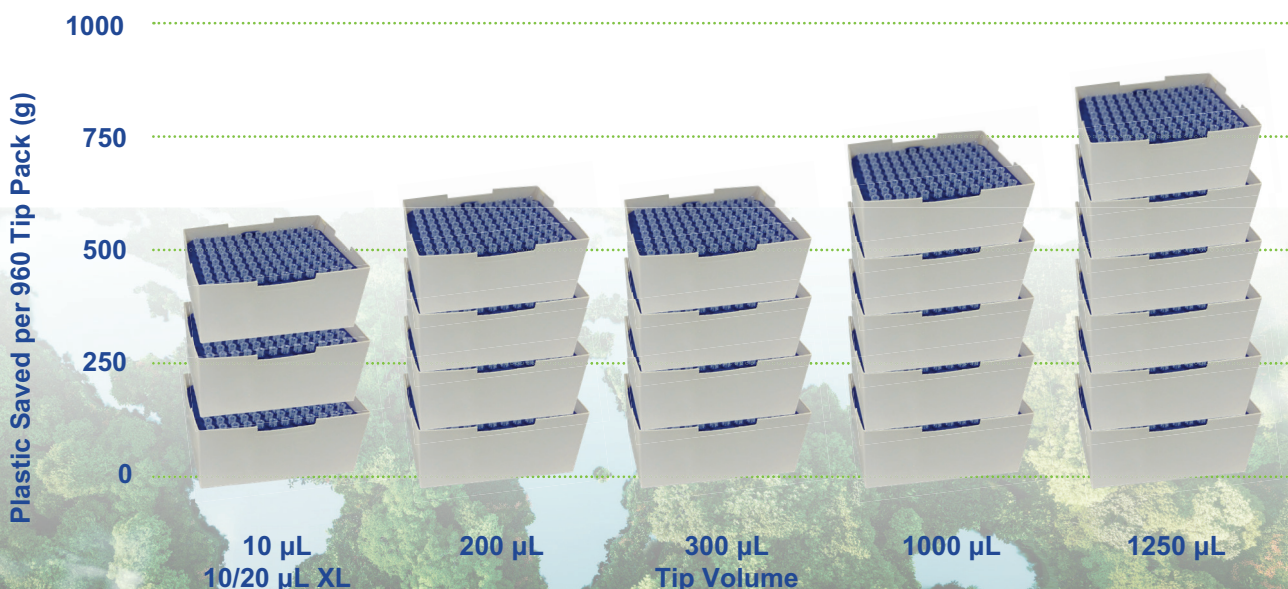
Make a difference and choose PaperBox for sustainable lab practices. Discover a smarter, greener choice with our PaperBox racks, the perfect eco-friendly alternative to plastic racks.

Features



- Sustainability meets Reliability - These durable racks ensure secure pipette tip storage while being 100% recyclable
- Innovative design - Eco-friendly PaperBox construction minimises environmental impact without compromising performance
- Space-saving efficiency - Supplied in compact dispenser towers, reducing bulk transportation needs and cutting emissions
- Significant plastic savings - Each case of PaperBox Filter tips saves an average of 665g of plastic, helping you protect the planet with every use
- Designed for guilt-free disposal - uniquely lightweight, thoughtfully composed
- Plastic Reduction up to 60%: Drastically lowers plastic consumption compared to traditional plastic racks
- Universal Compatibility: Works perfectly with both single - channel and multi-channel pipettes.

Plastic saved using Paperbox Filter Tips versus Racked tips





The environment friendly PaperBox rackboxes for EXPellPlus filter tips offer a sustainable solution for refilling your empty rack box with filter tips.

These recyclable rack boxes are an excellent alternative to conventional plastic filter tip rackboxes.

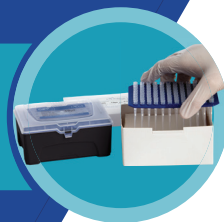


1 Prepare empty rackbox and new Paperbox.

1



2 Remove rack of tips from Paperbox.



3 Insert rack into rackbox and recycle Paperbox packaging.

3

Ordering Information

EXPell and EXPellPlus Filter Tips in PaperBox Racks

| Cat. No. | Description |
|----------|---|
| 5030029C | EXPellPlus 10 μ L, sterile, w/ filter, PaperBox, 5x10x96 pcs. |
| 5030059C | EXPellPlus 10/20 μ L XL, extra narrow, sterile, w/ filter, PaperBox, 5x10x96 pcs. |
| 5030063C | EXPellPlus 20 μ L, sterile, w/ filter, PaperBox, 5x10x96 pcs. |
| 5030064C | EXPellPlus 100 μ L, sterile, w/ filter, PaperBox, 5x10x96 pcs. |
| 5030089C | EXPellPlus 200 μ L, sterile, w/ filter, PaperBox, 5x10x96 pcs. |
| 5030114C | EXPellPlus 300 μ L, sterile, w/ filter, PaperBox, 5x10x96 pcs. |
| 5130149C | EXPell 1000 μ L, sterile, w/ filter, PaperBox.4x8x96 pcs. |
| 5130119C | EXPell 1250 μ L XL, sterile, w/ filter, PaperBox, 4x8x96 pc. |

INDIVIDUALLY WRAPPED TIPS

Ideal for sensitive applications, these micropipette tips ensure the highest aseptic conditions with unique individual packaging. Each tip guarantees sterility for every pipetting cycle, delivering unmatched performance and purity standards

Features

- Available in three volume sizes: 10 µL, 200 µL and 1000 µL
- Certified free from endotoxins, DNase, RNase, Pyrogen, Endotoxin, Human DNA and PCR Inhibitor
- Universally compatible with most pipette brands
- Made with a unique plastic polymer for a hydrophobic inner surface, reducing sample adhesion
- Low-retention properties of 10 and 200 µL tips minimise sample binding, ensuring high accuracy and reproducibility
- Sterile and individually wrapped, with batch numbers and expiration dates printed on each wrap



Ordering Information

EXPellPlus Individually Wrapped Tips

| Cat. No. | Description |
|----------|--|
| 5030012C | EXPellPlus 10 µL, sterile, clear, bag, 5x400 pcs. individually wrapped tips |
| 5030072C | EXPellPlus 200 µL, sterile, clear, bag, 5x400 pcs. individually wrapped tips |
| 5030132C | EXPellPlus 1000 µL, sterile, low retention, clear, bag, 5x200 pcs. individually wrapped tips |



MICROCENTRIFUGE TUBES

With EXPell and EXPell Secure, CAPP offers two variants of microcentrifuge tubes. Both manufactured from high-quality raw materials that meet standards of purity and have high mechanical stability and excellent chemical resistance. The EXPellSecure microcentrifuge tubes feature an exclusive design that eliminates the risk of accidental opening or lid detachment during vigorous processes. Hinge orientation nibs and safe click lock ensure leakproof performance and reducing sample loss due to evaporation during incubation or storage.

Features

- Perfect sealing prevents evaporation and ensures sample integrity
- Easy opening/closing with one hand
- Quick volume control thanks to precise graduation marks
- Frosted areas on tube body and lid allow easy sample identification
- For colour coding of the samples, the 1.5 mL EXPellSecure microcentrifuge tubes are also available in colour-coded sales units
- High clarity for excellent sample visibility
- Free of DNase, RNase, human DNA, pyrogen and endotoxin
- For high-performance applications EXPell Microcentrifuge Tubes withstands up to 20000 x g and EXPellSecure Microcentrifuge Tube up to 25000 x g



Ordering Information

EXPell and EXPell Secure Microcentrifuge Tubes

| Cat. No. | Description |
|----------|---|
| 5100500C | EXPell Microcentrifuge tubes 0.5 mL, clear, bulk, 10x1000 pcs. |
| 5100505C | EXPell Microcentrifuge tubes 0.5 mL, clear, bulk, sterile, 20x500 pcs. |
| 5101500C | EXPell Secure Microcentrifuge tubes 1.5 mL, clear, bulk, 16x500 pcs. |
| 5101505C | EXPell Secure Microcentrifuge tubes 1.5 mL, clear, sterile, bulk, 10x500 pcs. |
| 5102000C | EXPell Secure Microcentrifuge tubes 2.0 mL, clear, bulk, 16x500 pcs. |
| 5102005C | EXPell Secure microcentrifuge tubes 2.0 mL, clear, sterile, bulk, 10x500 pcs. |

CENTRIFUGE TUBES

CAPP Centrifuge Tubes have been carefully designed to meet a wide range of laboratory requirements, ensuring optimum comfort and durability. CAPP provides two sizes of Centrifuge Tubes, 15 and 50 mL to cover the daily need for sample storage and centrifugation in the laboratory.

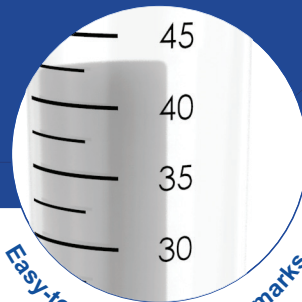
Features



- Leak-proof seal protects against accidental leakage
- Large ridges on the caps enable comfortable handling and optimum grip, even with gloves on
- The 3/4 turn closure enables faster operation and allows for one-handed use
- US FDA Approved Virgin Polypropylene
- Free of DNase, RNase, human DNA and endotoxin / non cytotoxic, biologically inert, BPA Free
- Withstand temperatures from -80° to 121°C
- Easy-to-read graduation marks for precise measurement
- Large writing area offers ample space for clear labelling and identification



Large writing area



Easy-to-read graduation marks

Ordering Information

BluCAPP Centrifuge Tubes

| Cat. No. | Description |
|----------|--|
| 5100014C | BluCAPP Centrifuge Tubes, 15 mL, bulk, 20x25 pcs. |
| 5100015C | BluCAPP Centrifuge Tubes, 15 mL, sterile, 20x25 pcs. |
| 5100019C | BluCAPP Centrifuge Tubes, 15 mL, cardboard rack, sterile, 20x25 pcs. |
| 5100049C | BluCAPP Centrifuge Tubes, 50 mL, bulk, 20x25 pcs. |
| 5100050C | BluCAPP Centrifuge Tubes, 50 mL, sterile, 20x25 pcs. |
| 5100059C | BluCAPP Centrifuge Tubes, 50 mL, cardboard rack, sterile, 20x25 pcs. |
| 5100060C | BluCAPP Centrifuge Tubes, 50 mL, sterile, self-standing, 20x25pcs. |

PCR TUBES | PCR STRIPS

CAPP EXPell PCR Tubes and PCR Strips, available in 0.1 mL and 0.2 mL sizes, are designed to deliver consistent, reliable PCR results every time. Crafted from premium polypropylene, these consumables are free from contaminants, ensuring the highest purity and precision throughout your PCR experiments, supporting accurate, reproducible results.

Features

- Thin-walled design optimised for exceptional PCR performance in a range of thermocyclers
- Frosted and white opacity options enhance signal-to-noise ratios for better PCR results
- Evaporation rate below 5% for reproducible results
- Free of DNase, RNase, DNA, PCR Inhibitor, ATP, Endotoxin
- Frosted flat cap for easy marking
- Made from USP VI polypropylene
- Compatible with standard and real-time PCR routine



Ordering Information

EXPell PCR Tubes

| Cat. No. | Description |
|----------|------------------------------------|
| 5100201C | PCR Tubes 0.2 mL, bag, 40x500 pcs. |

EXPell PCR Strips

| Cat. No. | Description |
|----------|---|
| 5100310C | qPCR 8-strip, frosted, separate optical flat caps 0.1 mL, 5x10x12 pcs. |
| 5100312C | qPCR 8-strip, clear, separate optical flat caps 0.1 mL, 5x10x12 pcs. |
| 5100316C | qPCR 8-strip, white, separate optical flat caps 0.1 mL, 5x10x12 pcs. |
| 5100210C | PCR 8-strip, clear, separate frosted flat caps 0.2 mL, 5x10x12 pcs. |
| 5100212C | PCR 8-strip, clear, w/ single attached frosted flat caps 0.2 mL, 5x10x12 pcs. |
| 5100217C | qPCR 8-strip, clear, separate optical flat caps 0.2 mL, 5x10x12 pcs. |
| 5100218C | qPCR 8-strip, white, separate optical flat caps 0.2 mL, 5x10x12 pcs. |

PETRI DISHES

Petri Dishes from CAPP are crafted in a contaminant-free cleanroom from premium-quality polystyrene, ensuring top-tier performance. Designed for optimal heat transfer, they maintain the ideal thermal zone for bacterial growth. With excellent optical clarity, they allow for quick and accurate observation of growth patterns, haemolysis, and antibiotic sensitivity.

Features

- Supplied in sleeves of 20 petri dishes
- Available in vented and non-vented formats to optimise airflow for different culture conditions
- 91.5 mm diameter provides ample space for streak-plates or spread-plates
- Space-saving stackable design for easy storage in incubators or refrigerators
- Made from premium-quality polystyrene that meets the specifications of 21 CFR US FDA regulation
- Raw materials comply with ISO 24998 guidelines, ensuring stringent sterility
- Manufactured in a contaminant-free environment for assured quality
- Simple packaging with traceable lot numbers for easy identification
- Excellent optical properties for accurate observation of cultures
- Fully compatible with medium throughput carousel-based media preparation systems



Ordering Information

CAPP Cultivation Petri Dishes

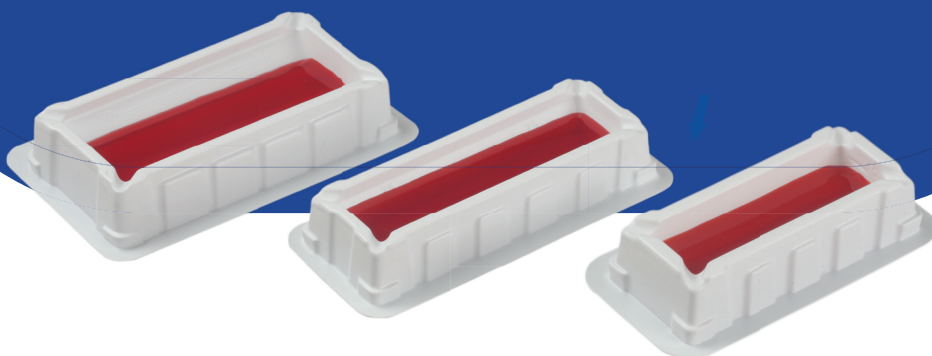
| Cat. No. | Description |
|----------|--|
| 5062000C | CAPP Petri Dishes, Ø91.5 mm, H:14.35 mm, without vents, aseptic, 24x20 pcs |
| 5062001C | CAPP Petri Dishes, Ø91.5 mm, H:14.35 mm, without vents, sterile, 24x20 pcs |
| 5062010C | CAPP Petri Dishes, Ø91.5 mm, H:14.55 mm, with 3 vents, aseptic, 24x20 pcs |
| 5062011C | CAPP Petri Dishes, Ø91.5 mm, H:14.55 mm, with 3 vents, sterile, 24x20 pcs |
| 5063000C | CAPP Petri Dishes, Ø91.5 mm, H:14.35 mm, without vents, aseptic, 25x20 pcs |
| 5063001C | CAPP Petri Dishes, Ø91.5 mm, H:14.35 mm, without vents, sterile, 25x20 pcs |
| 5063010C | CAPP Petri Dishes, Ø91.5 mm, H:14.55 mm, with 3 vents, aseptic, 25x20 pcs |
| 5063011C | CAPP Petri Dishes, Ø91.5 mm, H:14.55 mm, with 3 vents, sterile, 25x20 pcs |

REAGENT RESERVOIRS

With CAPP's sterile, disposable reagent reservoirs, you gain more efficiency in your manual liquid handling workflows. They make quick work of liquid transfer, whether you are working on ELISA, PCR, or any other suitable protocol.

Features

- Made from a unique blend of virgin polystyrene for high chemical stability and broad reagent compatibility
- Angled interior design minimises dead volume, reducing reagent waste
- Accurate graduations on interior slopes provide clear visibility from any angle
- Four pour spouts for easy, spill-free liquid discharge from all corners
- Stackable ridge design saves storage space, with a base lip for easy separation
- Supplied in two different packaging configurations : bulk or individually wrapped, sterile
- Available in 3 different sizes:
 - 10 mL, V-shaped - Ideal for 8 and 16 channel pipettes
 - 25 mL, Flat Bottom - works best with the CAPP Aero 384-well multichannel pipettes (32, 48 and 64 channel pipettes)
 - 50 mL, V-shaped Ideal for use with 12-channel pipettes



Ordering Information

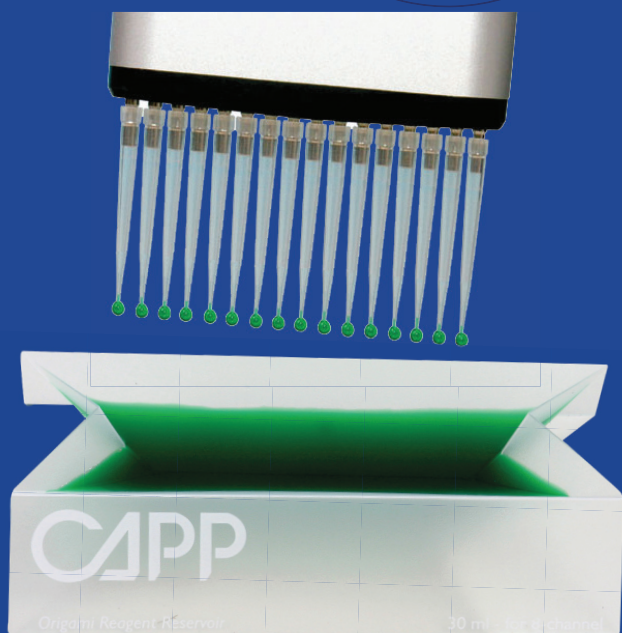
CAPP Sharp Reagent Reservoir

| Cat. No. | Description |
|----------|--|
| CA40515C | CAPP Sharp reagent reservoir 10 mL, bulk, 5x100 pcs. |
| CA40516C | CAPP Sharp reagent reservoir 10 mL, individually wrapped, sterile, 50 pcs. |
| CA40520C | CAPP Sharp reagent reservoir 25 mL, bulk, 5x100 pcs. |
| CA40521C | CAPP Sharp reagent reservoir 25 mL, individually wrapped, sterile, 50 pcs. |
| CA40525C | CAPP Sharp reagent reservoir 50 mL, bulk, 5x100 pcs. |
| CA40526C | CAPP Sharp reagent reservoir 50 mL, individually wrapped, sterile, 50 pcs. |

CAPP[®] Origami

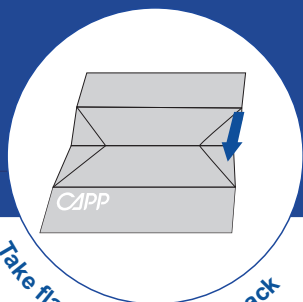
REAGENT RESERVOIRS

CAPP Origami represents a new way of thinking when it comes to reagent reservoirs

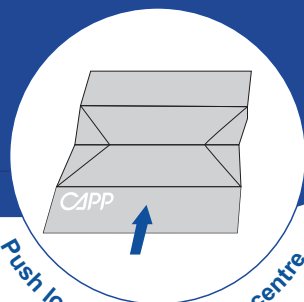


Features

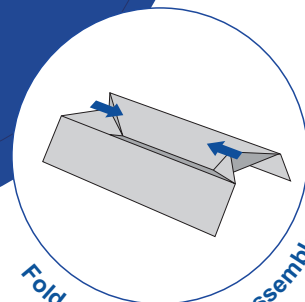
- V-shaped bottom prevents bubble formation and ensures retrieval of the last drop of liquid for efficient reagent use
- Sturdy construction offers a consistently firm and stable reservoir for pipetting
- Pre-folded design allows easy assembly by simply pushing the sides together
- Made from durable polypropylene, ensuring reliability and reusability
- Shipped and stored as flat sheets, saving space and reducing shipping costs
- Reservoirs are available as 30 mL reservoirs for 8/16 channel pipettes and 40 mL reservoirs for 12 channel pipettes
- Eco-friendly and space-saving, optimising storage and reducing environmental impact
- Increases workspace efficiency by saving benchtop space and lowering costs



Take flat reservoir from pack



Push long sides towards centre



Fold end triangles to assemble

Ordering Information

CAPP Origami Reagent Reservoir

| Cat. No. | Description |
|----------|--|
| CA40505 | CAPP Origami 30 mL (8- and 16-channel pipettes), 1 bag w/ 50 pcs. |
| CA40506 | CAPP Origami 30 mL (8- and 16-channel pipettes), sterile, 10 bags w/ 5 pcs. each |
| CA40510 | CAPP Origami 40 mL (12-channel pipettes), 1 bag w/ 50 pcs. |
| CA40511 | CAPP Origami 40 mL (12-channel pipettes), sterile, 10 bags w/ 5 pcs. each |

CRYO TUBES

CAPP offers EXPell Cryo Tubes in 5 sizes: 0.5 mL, 1.0 mL, 2.0 mL, 4.0 mL and 5.0 mL. Focusing on the best user experience and convenience, the quick seal closure with external threads enables easy tightening or removal with a half-turn.

These are one of very few cryo tubes to have external threads and star feet, allowing storage in 10x10 cryo boxes and saving up to 23% space compared to other standard options on the market. Made from specially formulated polypropylene, both the caps and tubes have matching expansion coefficients, ensuring leakproof performance at various temperatures.

EXPell Cryo Tubes are sterile ideal for storage in the vapour phase of liquid nitrogen.

Features

- Coloured cap inserts. Available in red, blue, green, white and yellow. Made of PP for easy recognition
- External thread super straight design gives up to 23% extra storage capacity when used with the 10x10 cryo boxes
- Lip seal cap design ensures that the tubes are leakproof
- Certified Purity – free of RNase, DNase, human DNA, PCR-Inhibitors, Pyrogens and ATP
- High-quality graduation marks and writing area for easy sample identification
- Quick seal design for single-handed operation. Tighten or open it with only half a turn!
- Super straight design fits into both 9x9 and 10x10 cryo boxes. No surface transition between the tube and the cap for minimal risk of contamination during storage
- Star-foot bottom for better stability and operation when stored on selected cryo boxes



Ordering Information

EXPell Cryo Tubes

| Cat. No. | Description |
|----------|---|
| 5040500C | EXPell Cryo Tube 0,5 mL, sterile, w/o print, bulk, case with 10x100 pcs (tubes) and 1x1000 pcs (caps) |
| 5041000C | EXPell Cryo Tube 1.0 mL, 10x100 pcs. sterile |
| 5042000C | EXPell Cryo Tube 2.0 mL, 10x100 pcs. sterile |
| 5044000C | EXPell Cryo Tube 4.0 mL, 5x100 pcs. sterile |
| 5045000C | EXPell Cryo Tube 5.0 mL, 5x100 pcs. sterile |

Coloured Cap Inserts for EXPell Cryo Tubes

| Cat. No. | Description |
|----------|--|
| 504R000C | Red Cap Insert for EXPell Cryo Tube, 1x500 pcs. |
| 504B000C | Blue Cap Insert for EXPell Cryo Tube, 1x500 pcs. |
| 504G000C | Green Cap Insert for EXPell Cryo Tube, 1x500 pcs. |
| 504W000C | White Cap Insert for EXPell Cryo Tube, 1x500 pcs. |
| 504Y000C | Yellow Cap Insert for EXPell Cryo Tube, 1x500 pcs. |

PLASTIC CRYO BOXES

CAPP's plastic EXPell Cryo Boxes are made from highly durable polypropylene and are suitable both for freezing at -90°C and autoclaving at +121°C for 20 minutes.



Features

- Space-saving design – 9x9 cryo boxes increasing storage capacity
- Multiple sizes – 9x9 cryo boxes are available in three heights
- Easy sample identification Numerical coding on the lid and base for quick and accurate tube tracking
- Vent holes at the bottom of each box rapidly increases freezing times and also allow the drainage of liquids
- Durable construction – made of high-quality polypropylene, suitable for storage at -90°C and autoclaving at +121°C
- One-handed operation – star-foot lock design allows tube opening without removing it from the box
- User-friendly handling – slanted edges ensure proper lid alignment and simplify use

Ordering Information

EXPell Plastic Cryo Box

| Cat. No. | Description |
|----------|---|
| 5042022C | EXPell Plastic Cryo Box, 9x9 cell grid for 1,0 - 2,0 mL cryovials, 130 x 130 x 50 mm, case of 36 pcs. |
| 5044020C | EXPell Plastic Cryo Box, 9x9 cell grid for 4,0 mL cryovials, 130 x 130 x 80 mm, case of 36 pcs. |
| 5045020C | EXPell Plastic Cryo Box, 9x9 cell grid for 5,0 mL cryovials, 130 x 130 x 90 mm, case of 36 pcs. |

CARDBOARD CRYO BOXES

CAPP's EXPell Cryo Boxes are crafted from high-quality, eco-friendly cardboard, and offer a sustainable alternative to traditional plastic storage solutions. Designed with a focus on reducing environmental impact, they are available in two grid configurations: 9x9 (81 cells) and 10x10 (100 cells), ensuring flexible and efficient storage options while supporting your commitment to a greener future.

With our cryo boxes you don't have to sacrifice quality to save the environment.

Both are important!

Features

- Eco-friendly and disposable, offering a sustainable cryo storage solution
- Temperature-resistant and recyclable for reliable performance and environmental sustainability
- Constructed with a water-repellent finish for added durability
- Write-on surface for easy sample identification and retrieval
- Removable grid provides flexibility for diverse storage needs
- Available in 9x9 (81 cells) and 10x10 (100 cells) grid options
- Chemically-resistant to alcohols and mild organic solvents



| | | | | | | | | |
|----|----|----|----|----|----|----|----|----|
| A1 | A2 | A3 | A4 | A5 | A6 | A7 | A8 | A9 |
| B1 | B2 | B3 | B4 | B5 | B6 | B7 | B8 | B9 |
| C1 | C2 | C3 | C4 | C5 | C6 | C7 | C8 | C9 |
| D1 | D2 | D3 | D4 | D5 | D6 | D7 | D8 | D9 |
| E1 | E2 | E3 | E4 | E5 | E6 | E7 | E8 | E9 |
| F1 | F2 | F3 | F4 | F5 | F6 | F7 | F8 | F9 |
| G1 | G2 | G3 | G4 | G5 | G6 | G7 | G8 | G9 |
| H1 | H2 | H3 | H4 | H5 | H6 | H7 | H8 | H9 |
| I1 | I2 | I3 | I4 | I5 | I6 | I7 | I8 | I9 |

9x9 configuration

| | | | | | | | | | |
|----|----|----|----|----|----|----|----|----|-----|
| A1 | A2 | A3 | A4 | A5 | A6 | A7 | A8 | A9 | A10 |
| B1 | B2 | B3 | B4 | B5 | B6 | B7 | B8 | B9 | B10 |
| C1 | C2 | C3 | C4 | C5 | C6 | C7 | C8 | C9 | C10 |
| D1 | D2 | D3 | D4 | D5 | D6 | D7 | D8 | D9 | D10 |
| E1 | E2 | E3 | E4 | E5 | E6 | E7 | E8 | E9 | E10 |
| F1 | F2 | F3 | F4 | F5 | F6 | F7 | F8 | F9 | F10 |
| G1 | G2 | G3 | G4 | G5 | G6 | G7 | G8 | G9 | G10 |
| H1 | H2 | H3 | H4 | H5 | H6 | H7 | H8 | H9 | H10 |
| I1 | I2 | I3 | I4 | I5 | I6 | I7 | I8 | I9 | I10 |
| J1 | J2 | J3 | J4 | J5 | J6 | J7 | J8 | J9 | J10 |

10x10 configuration

Ordering Information

EXPell Cardboard Cryo Boxes

Cat. No. **Description**

5042030C Cardboard Cryo Box B9, 133 x 133 x 50 mm, including 9x9 cell grid, case with 36 pcs.

5042020C Cardboard Cryo Box B10, 133 x 133 x 50 mm, including 10x10 cell grid, case with 36 pcs.

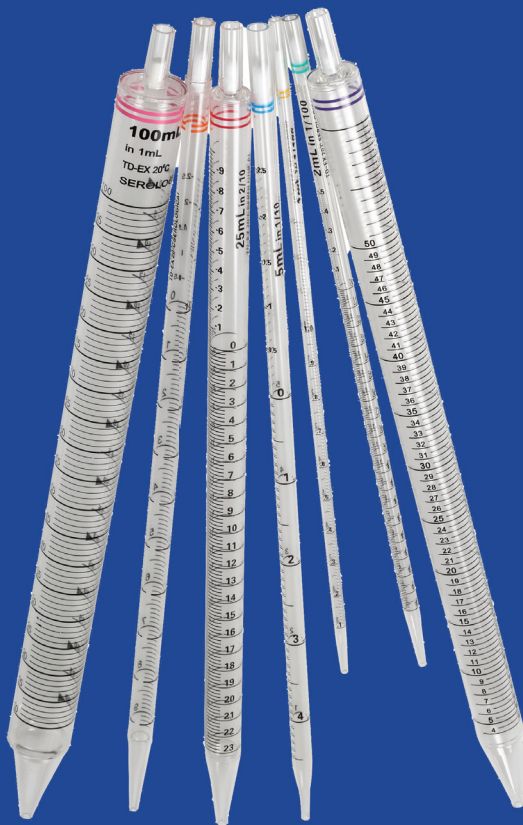
Cardboard Cryo Boxes
Eco-Friendly Innovation for Cold Storage



SEROLOGICAL PIPETTES

CAPP Harmony Serological Pipettes ensure accurate liquid handling with precise graduations, colour-coded heads, and filter plugs for contamination-free work. Made from USP CLASS VI polystyrene, they are durable, versatile, and compatible with various pipettors. Perfect for reliable results in any lab setup.

Features



- Designed for accurate and rapid fluid dispensing, these polystyrene pipettes are sterile, DNase/RNase free, non-pyrogenic and filtered (polyolefin (PO) filter) for a variety of liquid handling applications
- Clear and precise graduation achieves an accuracy of $\pm 2\%$ of the total volume
- Dual graduations simplifies the identification of pipetting volumes, the negative graduations increase the pipette's capacity and accommodate larger volume needs
- The pipettes are supplied individually wrapped in an easy-to-open, fibre-free, colour-coded paper/plastic combination
- Each pipette comes with an effective filter barrier that prevents the sample, aerosols and water vapour from entering the pipette and protects the sample from contamination by impurities within the pipette
- The uniform mouth piece fits all major pipettors and is colour-coded for easy identification

Ordering Information

CAPP Harmony Serological Pipettes

| Cat. No. | Description | Volume | Package | Colour |
|----------|---|--------|--------------------------------|--------|
| SP-1-C | CAPP Harmony Serological Pipette, sterile | 1 mL | individually wrapped, 500 pcs. | Yellow |
| SP-2-C | CAPP Harmony Serological Pipette, sterile | 2 mL | individually wrapped, 500 pcs. | Green |
| SP-5-C | CAPP Harmony Serological Pipette, sterile | 5 mL | individually wrapped, 200 pcs. | Blue |
| SP-10-C | CAPP Harmony Serological Pipette, sterile | 10 mL | individually wrapped, 200 pcs. | Orange |
| SP-25-C | CAPP Harmony Serological Pipette, sterile | 25 mL | individually wrapped, 150 pcs. | Red |
| SP-50-C | CAPP Harmony Serological Pipette, sterile | 50 mL | individually wrapped, 100 pcs. | Purple |
| SP-100-C | CAPP Harmony Serological Pipette, sterile | 100 mL | individually wrapped, 50 pcs. | Pink |

MINI VORTEX MIXER

CAPP Rondo Mini Vortex Mixer offers the ideal solution for thorough mixing and quick vortexing, delivering high performance in terms of speed, reliability and safety.

Features

- Microprocessor-controlled ensures delivery of the maximum speed, even under varying load conditions
- Variable speed is adjusted by turning speed control button
- Highly touch-sensitive switch ensures real-time mixing
- Suspension design for longer switch life
- Low-profile design with a small footprint, making it ideal for laboratory benches
- In-built counterbalance system creates maximum vortexing action, while minimizing noise and excessive vibration
- Brushless DC motor for safety, quick acceleration and low maintenance
- Ideal for cold rooms and incubators, it maintains a set speed between 5-40°C
- Chemically-resistant PC ABS molded exterior, with aluminium die-cast base



Specifications

| | | | |
|---------------------------|--------------------|--|-------------------------------------|
| Speed Range | 2000 - 4500 RPM | Protection Class (DIN EN 60529) | IP 43 |
| Speed Accuracy | ± 5 % | Material | Body - PC ABS / Platform - Die Cast |
| Motor Type | Brushless DC motor | Operating Mode | Touch |
| Max. Load Capacity | 500 g | Dimensions (W x D x H) | 100 x 100 x 70 mm |
| Max Tube Diameter | 30 mm | Weight | 0.55kg |
| Motion | Orbital | Power Consumption | 15 W |
| Orbital Diameter | 4.5 mm | | |

Scope of Delivery

| |
|-----------------------------|
| 1 pc. Mini Vortex Mixer |
| 1 pc. Inbuilt Power Adapter |
| 1 pc. User Manual |
| 1 pc. Warranty Card |

Ordering Information

| Cat. No. | Description |
|----------------|--|
| CRV-45X | CAPP Rondo Mini Vortex Mixer 4500 RPM w/ adjust. speed |

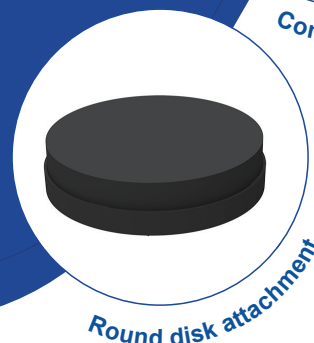
CAPP[®] Rondo

VORTEX MIXER

The CAPP Rondo Vortex Mixer is an indispensable piece of high-performance equipment designed to meet the rigorous demands of everyday mixing operations in any laboratory setting.

Features

- Maintenance-free motor technology is ideal for extended runs
- Adjustable speed and time, speed ranging from 300-3000 RPM
- Remains static on the bench due to the inbuilt counterbalance
- Has a conical tube attachment. A round disk attachment with base is also available as an accessory



Specifications

| | | | |
|---------------------------|----------------|-------------------------------|-------------------------------------|
| Speed Range | 300 - 3000 RPM | Operating Mode | Touch, Timer, Continuous (999 mins) |
| Motor | Brushless DC | Display | Yes |
| Max. Load Capacity | 500g | Pulse Mode | Yes, Programmable |
| Motion | Orbital | Dimensions (W x D x H) | 200 x 225 x 107 mm |
| Orbital Diameter | 4 mm | Weight | 4kg |
| Protection Class | IP 21 | Power Consumption | 22 W |

Scope of Delivery

| |
|--|
| 1 pc. Vortex Mixer |
| 1 pc. Power Adapter |
| 1 pc. Standard Conical Tube Attachment (pre-installed) |
| 1 pc. User Manual |
| 1 pc. Warranty Card |

Ordering Information

| Cat. No. | Description |
|--------------------|--|
| CRV-30XC | CAPP Rondo Vortex Mixer 3000 RPM w/ adjust. speed, timer and continuous mode |
| CRV-30XC-RA | Round disc attachment with base for CRV-30XC CAPP Rondo Vortex Mixer |

MICROCENTRIFUGE

CAPP Rondo Microcentrifuge has a lot more to offer than the basic microcentrifuges available on the market. It is available in two versions. The CR-68, is the basic version with a fixed speed of 6000 RPM/2000 x g. CR-68X is the advanced model with programmable speeds of up to 6000 RPM/2000 x g and a timer function, which is operated via two buttons and a digital display.

Features

- Quiet and powerful operation
- Supplied with 2 interchangeable magnetic rotors & reduction adaptors
- Equipped with safety functions such as a lid safety interlock and electronic safety brake, which activates an immediate stop when the lid is opened
- Quick operation with a simple lid open/close, starts and stops in seconds
- Microprocessor-controlled digital display with speed and time indication
- Small footprint for use in hoods and at small working areas
- Magnetic rotor for easy tool-free rotor replacement



Specifications

| CR-68 | | CR-68X | |
|-------------------------------|---------------------------------|-------------------------------|--|
| Speed | 6000 RPM 2000 x g (max. RCF) | Speed | 1000-6000 RPM 2000 x g (max. RCF) |
| Speed Accuracy | ± 200 RPM | Speed Accuracy | ± 100 RPM |
| Motor Type | DC motor | Motor Type | Brushless DC motor |
| Rotor Capacity | 8 x 1.5/2.0 mL. 2 x 8 x 0.2 mL | Rotor Capacity | 8 x 1.5/2.0 mL & 2-place PCR strip rotor |
| Time | No | Time Setting | 0 to 25 mins and infinite |
| Display | No | Display | Yes |
| Dimensions (W x D x H) | 162 x 157 x 116 mm | Dimensions (W x D x H) | 162 x 157 x 116 mm |
| Weight | 1.1kg | Weight | 1.1kg |
| Power consumption | 10 W | Power consumption | 15 W |

Scope of Delivery

| | |
|--|--------------------------------------|
| 1 pc. Microcentrifuge | 8 pcs. Adaptors for 0.5 mL Tubes |
| 1 pc. Power Adapter | 1 pc. User Manual |
| 1 pc. 8 x 1.5/2.0 mL Closed Micro Tube Rotor | 8 pcs. Adaptors for 0.1/0.2 mL Tubes |
| 1 pc. 2 x 8x0.2 mL PCR Strip Rotor | 1 pc. Warranty Card |

Ordering Information

| Cat. No. | Description |
|---------------|---|
| CR-68 | CAPP Rondo Microcentrifuge 6000 RPM/2000 x g |
| CR-68X | CAPP Rondo Microcentrifuge w/ adjustable speed and timer function, max. 6000 RPM/2000 x g |

HIGH SPEED MINI CENTRIFUGE

CAPP Rondo Mini Centrifuge is a modern, easy-to-use, and high-performance mini centrifuge equipped with a maintenance-free drive.



Features

- Lid lock safety and imbalance detection features ensure the utmost safety of the user during the operation
- USB port for remote control via a terminal device with data logger
- Adaptors provided for 0.1/0.2 mL and 0.4/0.5 mL tubes
- Quick and convenient setting made possible by the simple, intuitive interface
- Aluminum rotor, with a capacity to hold 12 tubes of 2 mL in volume, and a secure, screw-on metal lid
- Functions - last run memory / countdown timer / one touch short spin centrifugation / RPM/RCF speed setting / error display
- Small footprint



Specifications

| | |
|-------------------------------|---|
| Speed | 500 - 15000 RPM / 15596 x g (max. RCF) |
| Speed Accuracy | ± 100 RPM |
| Motor Type | Brushless DC |
| Rotor Capacity | 12 x 2.0 mL microtubes (pre-installed) Optional 2x8x0.1/0.2 mL PCR strip rotor |
| Time Setting | 30 sec. to 999 min. and infinite mode |
| Noise Level | < 60 db |
| Imbalance Detection | Yes |
| Display | Yes, backlit LCD display |
| Remote Operation | Yes, via USB Port |
| Dimensions (W x D x H) | 262 x 230 x 131 mm |
| Weight | 4.5kg (with rotor) |
| Power Consumption | 72 W |

Scope of Delivery

| |
|--|
| 1 pc. High Speed Mini Centrifuge |
| 1 pc. Power Adapter |
| 1 pc. USB Cable |
| 1 pc. Software CD |
| 1 pc. T-Allen Key |
| 1 pc. 12 slots microtube rotor (Pre-installed) |
| 12 pcs Adaptors for 0.4/0.5 mL Tubes |
| 12 pcs Adaptors for 0.1/0.2 mL Tubes |
| 1 pc. User Manual |
| 1 pc. Warranty Card |

Ordering Information

| Cat. No. | Description |
|------------------|--|
| CR-1512 | CAPP Rondo Mini Centrifuge 15000 RPM/15595 x g, for 12x 1.5/2.0 mL tubes |
| CR-15-PCR | PCR strip rotor for CAPP Rondo CR-1512 w/ reduction adaptors, 1 pc. |

PCR PLATE CENTRIFUGE

The CAPP Rondo CR-22P PCR Plate Centrifuge is a compact centrifuge for spinning down samples in PCR plates. This modern PCR Plate Centrifuge is compatible with both 96-well plates and 384-well plates.

Features

- Maintenance-free brushless DC motor
- Modern microprocessor-controlled centrifuge with variable speed and time setting and last run memory feature
- P1/P2 program feature
- Lid-lock safety mechanism prevents access to the rotor while it is spinning
- Automatic imbalance detection protects the centrifuge from running with an uneven load
- Intuitive and precise volume/speed adjustment via a digital interface with soft-touch buttons
- Small footprint and low loading height for maximum space saving



Rotor for 2 PCR Plates



Specifications

| | |
|-------------------------------|------------------------------------|
| Speed | 500 - 2500 RPM / 462 x g (max RCF) |
| Speed accuracy | ±100 RPM |
| Motor type | Brushless DC motor |
| Rotor capacity | 2 PCR plates (96 and 384-well) |
| Time Setting | 1 to 99 min. and infinite mode |
| Acceleration time | 30 + 5 seconds |
| Deceleration time | 20 + 5 seconds |
| Display | Yes |
| Dimensions (W x D x H) | 330 x 265 x 161 mm |
| Weight | 4kg (without rotor) |
| Power consumption | 24 W |

Scope of Delivery

| |
|------------------------------|
| 1 pc. PCR Plate Centrifuge |
| 1 pc. Power Adapter |
| 1 pc. T-Allen Key |
| 1 pc. Rotor for 2 PCR Plates |
| 1 pc. User Manual |
| 1 pc. Warranty Card |
| 1 pc. User Manual |

Ordering Information

| Cat. No. | Description |
|---------------|---|
| CR-22P | CAPP Rondo PCR Plate Centrifuge 2500 RPM/ 462 x g for 2x PCR plates |

REFRIGERATED UNIVERSAL CENTRIFUGE

The CAPP CRC-1544UCR is a high-performance refrigerated centrifuge engineered for a wide range of laboratory applications. Designed for precision, reliability, and user comfort, it offers a maximum speed of 15000 RPM and supports both fixed angle and swing-out rotors, making it an ideal choice for research, clinical, and diagnostic labs.



Features

- Brushless, maintenance-free DC motor runs at high speeds of up to 15000 RPM.
- Flexible operation with adjustable speed from 500–15000 RPM and time setting from 30 seconds to 999 minutes with infinite mode
- Microprocessor controlled for superior accuracy and repeatability Refrigeration temperature up to – 10 °C
- Lid-lock safety mechanism opens automatically after every run
- Smart imbalance detection with automatic cut-off ensures safety
- 9 Acceleration & 9 Deceleration modes protect delicate samples
- One-touch RPM/RCF conversion and short spin feature for ultrafast pelleting
- Intuitive large backlit digital LCD display with last-run memory
- Emergency lid release and low loading height for user convenience
- Smart airflow design prevents chamber overheating
- Stainless steel rotor chamber is corrosion-resistant and easy to clean
- Detects rotor automatically and sets maximum RCF accordingly



Specifications

| | | | |
|--------------------------|---|------------------------------------|---|
| Speed | 500–15000 RPM / RCF varies per rotor(up to 22388 g) | Imbalance Detection | Yes |
| Motor Type | Brushless DC | Lid Lock Safety | Yes (auto-open after run) |
| Display | Backlit Digital LCD | Noise Level | <72 dB |
| Speed Accuracy | ±100 RPM | Dimensions (W x D x H) | 705 x 585 x 330 mm |
| Time Setting | 30 sec – 999 min. and infinite mode | Weight | 24 kg (without rotor) |
| Speed steps | 100 RPM | Acceleration / Deceleration | 9 modes each |
| Temperature Range | -10°C to 40 °C | Rotors | Fixed angle and swing-out options available |

Scope of Delivery

| | |
|---|---------------------|
| 1 pc. CRC-1544UCR Refrigerated Centrifuge | 1 pc. User Manual |
| 1 pc. Power Adapter | 1 pc. Warranty Card |

Ordering Information

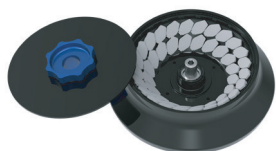
| Cat. No. | Description |
|--------------------|--|
| CRC-1544UCR | CAPP Rondo Universal Refrigerated Centrifuge 15000 RPM |

Rotor options

| | |
|-----------------------|---|
| CR-15-44UC-UCR | Fixed Angle Rotor 44 x 2 mL, max. RPM 15000 / RCF up to 22388 x g |
| CR-15-6UC-UCR | Fixed Angle Rotor 6 x 50 mL, max. RPM 6000 / RCF up to 2834 x g |
| CR-15-24UC-UCR | Fixed Angle Rotor 24 x 15 mL, max. RPM 6000 / RCF up to 2961 x g |
| CR-15-4UC-UCR | Swing Out Rotor 4 x 50 mL, max. RPM 4500 / RCF up to 3305 x g |
| CR-15-32UC-UCR | Swing Out Rotor 32 x 6 mL, max. RPM 4500 / RCF up to 3164 x g |

CR-15-44UC-UCR

Fixed Angle Rotor
44 x 2 mL,
RCF up to 22388 x g



CR-15-6UC-UCR

Fixed Angle Rotor
6 x 50 mL,
RCF up to 2834 x g



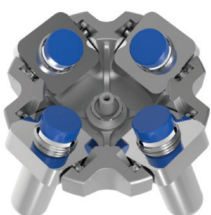
CR-15-24UC-UCR

Fixed Angle Rotor
24 x 15 mL,
RCF up to 2961 x g



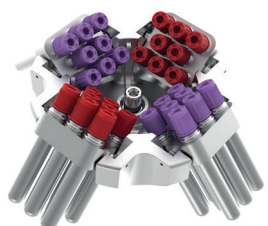
CR-15-4UC-UCR

Swing Out Rotor
4 x 50 mL,
RCF up to 3305 x g



CR-15-32UC-UCR

Swing Out Rotor
32 x 6 mL,
RCF up to 3164 x g



Important note – Each rotor has a range of optional tube adaptors.

Go to: www.ahn-bio.com/product/capp-rondo-crc-1544ucr-refrigerated-universal-centrifuge/ to see the full overview of all adaptors available.

REFRIGERATED CENTRIFUGE

The CAPP Rondo Refrigerated Centrifuge is a high-performance centrifuge for spinning samples in a controlled low-temperature environment of up to -20°C (±4°C). Using this centrifuge, molecular biology samples such as antibodies, DNA, RNA, and PCR, among others, can be processed with ease.

Features



- Comes with 4 interchangeable rotor options for flexible sample handling and easy customization
- Brushless, maintenance-free DC motor runs at high speeds of up to 15000 RPM, delivering a smooth, high-speed performance with no maintenance required
- Refrigerated benchtop centrifuge maintains a stable temperature throughout the run, even at high speeds, with its built-in refrigeration system
- Flexible run timer offers exceptional versatility - from 30 seconds to 999 minutes - suitable for many protocols
- Up to 99 user-defined programs of four lines each
- Imbalance detection feature and lid lock safety mechanism for secure operation every time
- Silent operation
- Functions - countdown timer / RPM/RCF speed setting / error display

Specifications

| | | | |
|----------------------------|---|-------------------------------|--------------------|
| Speed | 500-15000 RPM / RCF varies per rotor | Temperature Accuracy | ± 1 °C |
| Display | Yes, backlit LCD | Refrigerant | R290 |
| Speed Accuracy | ± 100 RPM | Time Setting | 30 sec. - 999 min. |
| Motor Type | Brushless DC | Temperature Range | - 20°C to 40 °C |
| Rotor Capacity | 24 x 1.5 / 2 ml micro tubes / 44 x 1.5 / 2 ml micro tubes / 8 x 5 ml / 4 PCR strips | Dimensions (W x D x H) | 325 x 720 x 305 mm |
| Imbalance Detection | Yes | Weight | 43kg |
| Noise Level | <60 dB | | |

Scope of Delivery

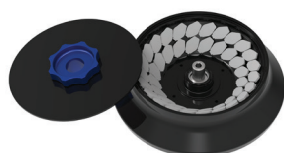
| | |
|-------------------------------|---------------------|
| 1 pc. Refrigerated Centrifuge | 1 pc. Grease Tube |
| 1 pc. Power Adapter | 1 pc. User Manual |
| Adaptors for 0.4/0.5 mL Tubes | 1 pc. Warranty Card |
| Adaptors for 0.1/0.2 mL Tubes | |

Ordering Information

| Cat. No. | Description |
|-----------------|--|
| CR-1544R | CAPP Rondo Refrigerated Centrifuge 15000 RPM, 220V |
| CR-15-44 | Fixed angle rotor for 44x 1.5 mL/ 2.0 mL MT, 22388 x g |
| CR-15-24 | Fixed angle rotor for 24x 1.5 mL/ 2.0 mL MT, 21420 x g |
| CR-15-8 | Fixed angle rotor for 8x 5.0 mL MT, 18462 x g |
| CR-15-4 | Fixed angle rotor for 4 strips of 8x 0.2 mL/ 0.5 mL PCR tubes, 15397 x g |

CR-15-44

Fixed angle rotor for
44x 1.5 mL/
2.0 mL microtubes



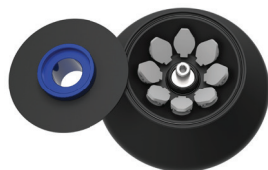
CR-15-24

Fixed angle rotor
for 24x 1.5 mL/
2.0 mL microtubes



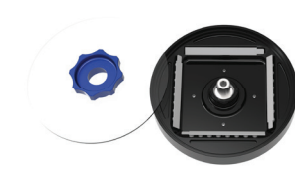
CR-15-8

Fixed angle rotor
for 8x 5.0 mL
microtubes



CR-15-4

Fixed angle rotor
for 4 strips of 8x 0.2 mL/
0.5 mL PCR tubes



LAB CENTRIFUGE

CAPP Rondo Universal Centrifuge has been developed after much research on user feedback and expectations. Occupying a minimal amount of bench space, it offers powerful and efficient centrifugation while maintaining high performance over a long time of use.

Features



- Wide range of rotor options include both swing-out and fixed-angle rotors for versatile applications
- Emergency Lid Release provides safe lid opening if power is lost
- Imbalance detection with auto cutoff feature
- Nine acceleration/deceleration modes allow a smooth start/stop to protect sensitive samples
- Intelligent airflow system that prevents sample overheating during centrifugation
- User-friendly interface with a digital display for easy monitoring of multiple parameters
- Functions – last run memory / countdown timer / quick spin / RPM/RCF speed setting / error display / customised programs



Specifications

| | | | |
|-------------------------------|--|-------------------------------|---|
| Speed | 500 - 4500 RPM / RCF varies per rotor type | Programmable | Yes, up to 99 programs |
| Speed Accuracy | ± 100 RPM | Noise Level | <65 dB |
| Motor Type | Brushless DC motor (BLDC) | Imbalance Detection | Yes |
| Rotor Capacity | 400 mL (4x100 mL) | Power Consumption | 300 W |
| Display | Yes, LED Display | Rotors (optional) | Multiple rotor options (swing-out and fixed-angle rotors) |
| Time Setting | from 1 to 99 mins and infinite mode | Dimensions (W x D x H) | 585 x 475 x 325 mm |
| Min. Acceleration Time | 30 sec. | Weight | 23kg (without rotor) |
| Min. Deceleration Time | 30 sec. | | |

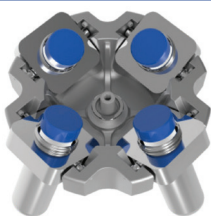
Scope of Delivery

| | |
|----------------------------|---------------------|
| 1 pc. Universal Centrifuge | 1 pc. Grease Tube |
| 1 pc. Power Adapter | 1 pc. User Manual |
| 1 pc. T-Allen Key | 1 pc. Warranty Card |

Ordering Information

| Cat. No. | Description |
|----------------------|--|
| CRC-432X | CAPP Rondo Universal Centrifuge (up to 4 x 100 mL) |
| Rotor options | |
| CR-43-50-4 | 4 x 50 mL swing out rotor, with stainless steel tubes, RCF 3485 x g |
| CR-43-100 | 4 x 100 mL swing out rotor with Bio Safety Cap, RCF 3164 x g |
| CR-43-15 | 16 x 15 mL swing out rotor with stainless steel tubes, RCF 3485 x g |
| CR-43-PL | 2 x plates swing out rotor, RCF 2355 x g |
| CR-43-06 | 32 x 6 mL swing out rotor, RCF 3164 x g |
| CR-43-50-4F | 4 x 50 mL fixed angle rotor, with stainless steel tubes, RCF 2644 x g |
| CR-43-100F | 4 x 100 mL fixed-angle rotor, RCF 2559 x g |
| CR-43-15F-16 | 16 x 15 mL fixed-angle rotor, RCF 3144 x g |
| CR-43-15F-24 | 24 x 15 mL fixed-angle rotor, RCF 2852 x g |
| CR-43-06 | 32 x 6mL swing rotor, RCF 3164 g (includes 32 x 6mL SS tubes dia.13 mm, length 100 mm) |

CR-43-50-4
4 x 50 mL
swing out rotor,
with stainless steel
tubes,
RCF 3485 x g



CR-43-50-4F
4 x 50 mL
fixed angle rotor,
with stainless steel
tubes, RCF 2644 x g



CR-43-100
4 x 100 mL
swing out rotor with
Bio Safety Cap,
RCF 3164 x g



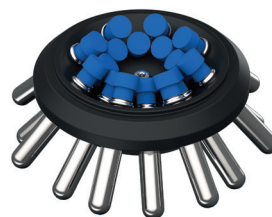
CR-43-100F
4 x 100 mL
fixed-angle rotor
RCF 2559 x g



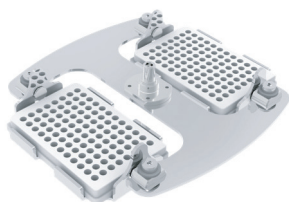
CR-43-15
16 x 15 mL swing out
rotor with stainless steel
tubes RCF 4312 x g



CR-43-15F-16
16 x 15 mL
fixed-angle rotor
RCF 3144 x g



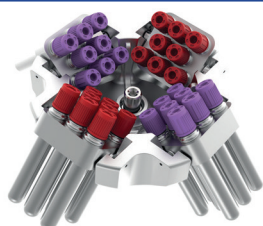
CR-43-PL
2 x plate
swing out rotor
RCF 2355 x g



CR-43-15F-24
24 x 15 mL
fixed-angle rotor
RCF 2854 x g



CR-43-06
32 x 6mL
swing out rotor
RCF 3164 x g



Important note – Each rotor has a range of optional tube adaptors.
Go to: www.ahn-bio.com/product/capp-rondo-universal-centrifuge to see the full overview of all adaptors available.

CLINICAL CENTRIFUGE

CAPP Rondo Clinical Centrifuge is a compact and reliable low-speed centrifuge, ideal for blood centrifuge applications involving volumes below 15 mL. It stands out in its category for having great features that ensure an easy-to-use, reliable, safe performance.

Features

- Rotor capacity of up to 8 x 15 mL tubes on a fixed-angle rotor
- Smart airflow design reduces noise
- Precise RPM setting with increments from 100 RPM and setting from 500-6500 RPM
- Built with a long-life brushless DC motor and a microprocessor
- Can accommodate widely used blood collection tubes due to included adaptors for 5 mL, 7mL, 1.5 mL and 2 mL tubes
- Digital display with speed and timer indicator
- Automatic imbalance detection
- Lid lock safety – lid opens automatically after the operation is completed
- Functions – countdown timer / RPM/RCF speed setting / error display



Now Portable
With Optional
Accessory



2 YEAR
Warranty



Rotor

Specifications

| | |
|-------------------------------|--------------------------------------|
| Speed | 500 - 6500 RPM / 3873 x g (max. RCF) |
| Speed Accuracy | ±100 RPM |
| Motor Type | Brushless DC Motor |
| Time Setting | 1 to 30 min and infinite mode |
| Imbalance Detection | Yes |
| Noise Level | < 60 dB |
| Acceleration Time | 43 ± 2 sec. |
| Deceleration Time | 40 ± 2 sec. |
| Display | Yes |
| Dimensions (W x D x H) | 260x 244 x 203 mm |
| Weight | 4kg (with rotor) |
| Power Consumption | 100 W |

Scope of Delivery

| |
|---|
| 1 pc. Clinical Centrifuge |
| 1 pc. 8-slots Fixed Angle Rotor (Pre-installed) |
| 1 pc. Power Adapter |
| 1 pc. T-Allen Key |
| 8 pc. Reduction Adaptors |
| 8 pc. Tube Holder and Rubber Cap |
| 1 pc. User Manual |
| 1 pc. Warranty Card |

Ordering Information

| Cat. No. | Description |
|---------------------|---|
| CRC-658 | CAPP Rondo Clinical Centrifuge 6500 RPM / 3.873 x g for 8 x 15 mL |
| CRC-658-0006 | Portable Cable |

CLINICAL CENTRIFUGE

With multiple rotor options, and maximum speed of 4000 RPM, the versatile CAPP Rondo Clinical Centrifuge accommodates a wide range of sample sizes. It is carefully designed with a compact footprint to occupy less desktop space, without losing functionality. Features such as its motorised latch, favourite mode, microprocessor-controlled motor all result in a superbly easy-to-use piece of equipment

Features

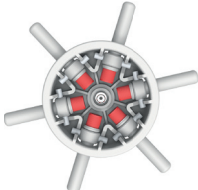


- Brushless DC motor enables maintenance-free and long-lasting operation
- Microprocessor-controlled with variable speed and time setting
- Safe operation thanks to automatic imbalance detection
- Compact design with low loading height allows an easy operation
- Precise RPM setting from 500 to 4000 RPM in steps of 10 RPM
- Safety lid brake, preventing the lid from opening until the rotor has completely stopped
- The user can program up to 99 individual protocols
- Functions – Short Spin operation / change from RPM to RCF / last run memory



Specifications

| | | | |
|----------------------------|-------------------------------------|-------------------------------|-----------------------|
| Speed | 500-4000 RPM / RCF varies per rotor | Display | Yes |
| Speed Accuracy | ± 10 RPM | Dimensions (W x D x H) | 381 x 480 x 185 mm |
| Time Setting | 1-999 minutes and infinite mode | Weight | 8.2kg (without rotor) |
| Imbalance Detection | Yes | Power Consumption | 90 W |
| Noise level | ≤65 dB (A) | | |

Rotor Types (optional)

| | | | | | |
|--|---|--|--|---|---|
| Rotor Type Swing out Capacity 6x10 mL Max RCF 2270 x g |  | Rotor Type Fixed angle Capacity 8x15 mL Max RCF 1950 x g |  | Rotor Type Fixed angle Capacity 16x10 mL Max RCF 2180 x g |  |
|--|---|--|--|---|---|

Scope of Delivery

| |
|-------------------------------------|
| 1 pc. Clinical Centrifuge |
| 1 pc. Power Adapter |
| Reduction Adaptors |
| Tube Holder (as per selected rotor) |
| 1 pc. User Manual |
| 1 pc. Warranty Card |

Ordering Information

| Cat. No. | Description |
|-----------------|--|
| CRC-416X | CAPP Rondo Clinical Centrifuge 4000 RPM |
| CRC-4-8 | Fixed angle rotor of CRC-416X for 8 x 15 mL tubes |
| CRC-4-16 | Fixed angle rotor of CRC-416X for 16 x 10 mL tubes |
| CRC-4-6S | Swing-out rotor of CRC-416X for 6 x 10 mL tubes |

UNIVERSAL CENTRIFUGE

The CAPP CRC-1544UC is a versatile centrifuge built for universal lab applications requiring high performance & precision. Ideal for research labs and clinical diagnostics, it combines ergonomic design with powerful functionality.

NEW
PRODUCT



Features

- Brushless, maintenance-free DC motor runs at high speeds of up to 15000 RPM.
- Flexible operation with adjustable speed from 500–15000 RPM and time setting from 30 seconds to 999 minutes with infinite mode
- Microprocessor controlled for superior accuracy and repeatability
- Lid-lock safety mechanism opens automatically after every run
- Smart imbalance detection with automatic cut-off ensures safety
- 9 Acceleration & 9 Deceleration modes protect delicate samples
- One-touch RPM/RCF conversion and short spin feature for ultrafast pelleting
- Intuitive large backlit digital LCD display with last-run memory
- Emergency lid release and low loading height for user convenience
- One-touch RPM/RCF conversion and short spin feature
- Smart airflow design prevents chamber overheating
- Stainless steel rotor chamber is corrosion-resistant and easy to clean

Specifications

| | | | |
|--------------------------|--|------------------------------------|---|
| Speed | 500–15000 RPM / RCF varies per rotor (up to 22388 g) | Imbalance Detection | Yes |
| Motor Type | Brushless DC | Lid Lock Safety | Yes (auto-open after run) |
| Display | Backlit Digital LCD | Noise Level | <72 dB |
| Speed Accuracy | ±100 RPM | Dimensions (W x D x H) | 475 x 585 x 325 mm |
| Time Setting | 30 sec – 999 min. and infinite mode | Weight | 24 kg (without rotor) |
| Speed steps | 100 RPM | Acceleration / Deceleration | 9 modes each |
| Temperature Range | 5 - 40 °C | Rotors | Fixed angle and swing-out options available |

Scope of Delivery

| | |
|---------------------------------------|---------------------|
| 1 pc. CRC-1544UC Universal Centrifuge | 1 pc. User Manual |
| 1 pc. Power Adapter | 1 pc. Warranty Card |

Ordering Information

| Cat. No. | Description |
|-------------------|---|
| CRC-1544UC | CAPP Rondo Universal Centrifuge 15000 RPM |

Rotor options

| | |
|-----------------------|---|
| CR-15-44UC-UCR | Fixed Angle Rotor 44 x 2 mL, max. RPM 15000 / RCF up to 22388 x g |
| CR-15-6UC-UCR | Fixed Angle Rotor 6 x 50 mL, max. RPM 6000 / RCF up to 2834 x g |
| CR-15-24UC-UCR | Fixed Angle Rotor 24 x 15 mL, max. RPM 6000 / RCF up to 2961 x g |
| CR-15-4UC-UCR | Swing Out Rotor 4 x 50 mL, max. RPM 4500 / RCF up to 3305 x g |
| CR-15-32UC-UCR | Swing Out Rotor 32 x 6 mL, max. RPM 4500 / RCF up to 3164 x g |

CR-15-44UC-UCR

Fixed Angle Rotor
44 x 2 mL,
RCF up to 22388 x g



CR-15-6UC-UCR

Fixed Angle Rotor
6 x 50 mL,
RCF up to 2834 x g



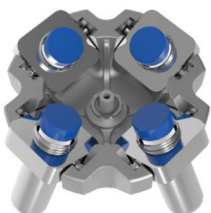
CR-15-24UC-UCR

Fixed Angle Rotor
24 x 15 mL,
RCF up to 2961 x g



CR-15-4UC-UCR

Swing Out Rotor
4 x 50 mL,
RCF up to 3305 x g



CR-15-32UC-UCR

Swing Out Rotor
32 x 6 mL,
RCF up to 3164 x g



Important note – Each rotor has a range of optional tube adaptors.

Go to: www.ahn-bio.com/product/capp-rondo-crc-1544uc-universal-centrifuge/ to see the full overview of all adaptors available.

GEL CARD CENTRIFUGE

The CAPP Rondo Gel Card Centrifuge is designed for universal compatibility, making it suitable for use with all standard gel cards. It is an very good choice for hospitals, blood banks and laboratories.

**NEW
PRODUCT**



Features

- This excellent centrifuge is capable of holding up to 12 gel cards simultaneously and is compatible with a wide variety of Gel Cards
- Favourite Mode allows users to set up and store up to 99 user-defined programs
- For enhanced safety, the CAPP Rondo Gel Card Centrifuge features a lid lock mechanism that secures the lid during operation
- Safe operation thanks to automatic imbalance detection
- Microprocessor-controlled centrifuge with variable speed and time setting
- The brushless DC motor enables maintenance-free and long-lasting operation
- Compact design with low loading height for easy operation
- Precise RPM setting from 500 to 2200 RPM in steps of 10 RPM
- Safety lid brake, preventing the lid from opening until the rotor has completely stopped
- Functions - last run memory / RPM/RCF speed setting / short spin



**2 YEAR
Warranty**

Specifications

| | | | |
|--------------------------|---------------------------|------------------------------|---------------------------------|
| Speed | 500-2200 RPM / RCF varies | Noise Level | < 65 dB (A) |
| Speed Accuracy | ± 100 RPM | Time Setting | 1 to 999 mins and Infinite mode |
| RCF | 470g | Display | Yes |
| Motor Type | Brushless DC Motor | Dimension (W x D x H) | 381 x 480 x 185 mm |
| Rotor Capacity | 12 Gel cards | Weight | 8.3kg |
| Acceleration Time | 35 ± 5 seconds | Power Consumption | 48 W |
| Deceleration Time | 50 ± 5 seconds | | |

Ordering Information

| Cat. No. | Description |
|------------------|--|
| CRC-212GC | CAPP Rondo Gel Card Centrifuge 2200 RPM |

Scope of Delivery

| | |
|---------------------------|---------------------|
| 1 pc. Gel Card Centrifuge | Gel Card Holder |
| 1 pc. Power Adapter | 1 pc. User Manual |
| 1 pc. T-Allen Key | 1 pc. Warranty Card |
| Reduction Gel Card Plate | |

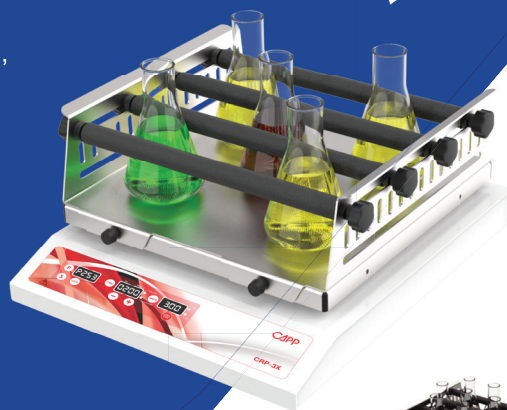
PLATFORM SHAKER

The CAPP Rondo Platform Shaker offers efficient mixing with a durable, maintenance-free design for extended use.

**NEW
PRODUCT**

Features

- Offers multiple programmable modes, such as motion direction, speed, time, dwell time, sequence and loop operation
- Different optional attachment platforms and clamps make it possible to use almost all shapes and sizes of vessels
- The Auto Power On option ensures operation continues for the remaining time after a power failure

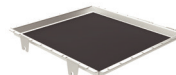


Specifications

| | | | |
|------------------------------|-------------------------------|-------------------------------|--|
| Speed | 50-300 RPM | Platform Size | 330 x 330 mm |
| Orbital Diameter | 20 mm | Orbital Diameter | IP 21 |
| Motion | Orbital/Linear | Programmable Features | Up to 6 programs, each with 9 sub-programs |
| Motor Type | Brushless DC motor | | |
| Max. Loading Capacity | 7.5kg (with attachment) | Programmable Looping | Yes |
| Time Setting | 1 min to 99 hours and 59 mins | Dimensions (L x W x H) | 420 x 355 x 110 mm |
| Noise Level | < 60 dB | Weight | 10 kg |
| Digital Display | Yes | Power Consumption | 24 W |



CRP-U



CRP-D



CRP-C9-250



CRP-C9-500



CRP-F



CRP-CS9-250



CRP-CS9-500



CRP-CS-250

Ordering Information

| Cat. No. | Description |
|--------------------|---|
| CRP-3X | CAPP Rondo Platform Shaker ø 20 mm |
| CRP-U | Universal Platform with Adjustable Bars (Flask capacity 9 x 250 mL, 6 x 500 mL) |
| CRP-D | Disk Attachment Base Plate with Slip-resistant Tray |
| CRP-C9-250 | Base Plate with 9 Plastic Clamps: 9 x 250 mL |
| CRP-C9-500 | Base Plate with 9 Plastic Clamps: 9 x 500 mL |
| CRP-F | Funnel Attachment |
| CRP-CS9-250 | Base Plate with 9 Stainless Steel Clamps: 9 x 250 mL |
| CRP-CS9-500 | Base Plate with 9 Stainless Steel Clamps: 9 x 500 mL |
| CRP-CS-100 | Stainless Steel Clamp for 100 mL Flask |
| CRP-CS-150 | Stainless Steel Clamp for 150 mL Flask |
| CRP-CS-250 | Stainless Steel Clamp for 250 mL Flask |
| CRP-CS-500 | Stainless Steel Clamp for 500 mL Flask |
| CRP-CS-1000 | Stainless Steel Clamp for 1000 mL Flask |

Scope of Delivery

| |
|-----------------------|
| 1 pc. Platform Shaker |
| 1 pc. Power Adapter |
| 1 pc. Spanner |
| 1 pc. User Manual |
| 1 pc. Warranty Card |

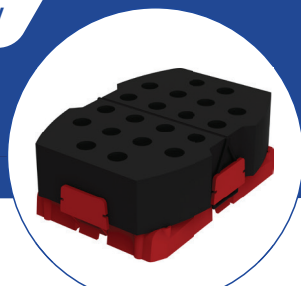
SINGLE PLATE SHAKER

The CAPP Rondo Plate Shaker is an ideal choice of microplate shaker for any test environment. It combines high performance and exceptional user-friendliness in a compact format. It saves valuable space and is ideal for use in cold rooms or incubators.

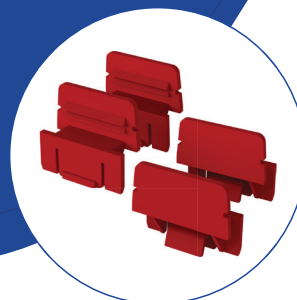


Features

- Comes with interchangeable clamps that provide universal fitting for different microplates
- Microprocessor-controlled for higher accuracy
- The in-built counterbalance ensures a stable, quiet and long-life operation
- Easy and spill-free loading and removal of plates
- Provided with an accessory tube foam adaptor to accommodate 20 microtubes of 1.5/2 mL
- Compact footprint saves valuable space, ideal for use in cold rooms or incubators (5 to 40°C)
- Variable Speed and Timer Setting
- Rubber suction cups for stable operation



Tube foam adaptor



Clamp set

Specifications

| | |
|-------------------------|-------------------------------|
| Speed | 300 - 1800 RPM |
| Orbital Diameter | 2 mm (orbital motion) |
| Motor Type | Brushless DC |
| Time Setting | 1 to 99 min and infinite mode |
| In-built Counterbalance | Yes |
| Noise Level | <60 dB |
| Digital Display | Yes |
| Dimensions (W x D x H) | 127 x 86 x 85 mm |
| Weight | 1.4kg |
| Power Consumption | 9 W |

Scope of Delivery

| |
|---------------------------|
| 1 pc. Single Plate Shaker |
| 1 pc. Power Adapter |
| Clamp Sets |
| O-Rings |
| 1 pc. MCT Foam Attachment |
| 1 pc. User Manual |
| 1 pc. Warranty Card |

Ordering Information

| Cat. No. | Description |
|----------|--|
| CRP-18X | CAPP Rondo Single plate shaker, 300 to 800 RPM |

4-PLACE PLATE SHAKER

CAPP Rondo 4-Place Plate Shaker is the perfect solution for efficiently and thoroughly mixing up to four individual microplates of various types at once. Its precise 3 mm orbital motion delivers exceptional mixing performance, ensuring consistent results with every use.

Features

- Shaker is compatible with all commonly used skirted microplates
- Pulse mode for continuous mixing in both clockwise and counterclockwise directions
- Microprocessor controlled for efficient performance even under high load
- Last run feature
- Rubber O-rings ensure an ultimate grip for all four plates
- Digital display gives the user an overview of the speed and time settings
- Easy access to all 4 plates for easy loading and unloading



Specifications

| | | | |
|-------------------------|--------------------------------------|-------------------------------|--------------------|
| Speed | 200 - 1200 RPM | Digital Display | Yes |
| Orbital Diameter | 3 mm | Platform Size | 274 x 188 mm |
| Motion | Orbital | Protection Class | IP 21 |
| Motor Type | BLDC motor | Noise Level | <60 dB |
| Time Setting | 1 to 99 mins and infinity mode | Dimensions (W x D x H) | 267 x 393 x 105 mm |
| Pulse Mode | Yes, clockwise and counter clockwise | Weight | 4.91kg |
| Capacity | Up to 4 microplates | Power Consumption | 36 W |

Scope of Delivery

| |
|----------------------------|
| 1 pc. 4-Place Plate Shaker |
| 1 pc. Power Adapter |
| 1 pc. O-Ring |
| 1 pc. User Manual |
| 1 pc. Warranty Card |

Ordering Information

| Cat. No. | Description |
|-----------------|--|
| CRP-412X | CAPP Rondo 4-Place Plate Shaker 1200 RPM |

4-PLACE INCUBATING SHAKER

The CAPP Rondo 4-Place Incubation Shaker provides thorough mixing and even heating for 96/384-well microplates. This innovative microprocessor-controlled incubating shaker can be used in a wide spectrum of life science applications including immunochemistry protocols, biochemical analyses, cell culture protocols, microarrays, and more.

Features



- High-performance maintenance-free BLDC motor with extended run times (from 1 to 99 minutes and beyond)
- Large capacity for 4 x 96/384 microplates
- Pulse mode for continuous clockwise and counterclockwise mixing of samples in microplates
- Incubation shaker with a simple design for easy access to all 4 plates and effortless cleaning and maintenance
- Temperature control from ambient 3°C to 70 °C
- Last run feature
- Rubber O-rings ensure the ultimate grip for all four plates



Specifications

| | | | |
|---------------------------------------|---------------------|-------------------------------|---|
| Speed | 200-1200 RPM | Time Setting | 1 to 99 hours 59 min and infinite |
| Motion | 3mm, Orbital | Pulse Mode | Programmable (clockwise and counterclockwise) |
| Motor Type | Brushless DC | Display | Yes |
| Capacity | 4 Microplates | Dimensions (W x D x H) | 267 x 361 x 155 mm |
| Temperature Range | Ambient 3°C to 70°C | Weight | 8.45kg |
| Temperature Stability/Accuracy | ±0.5°C | Power Consumption | 264 W |

Scope of Delivery

| |
|---------------------------------|
| 1 pc. 4-Place Incubating Shaker |
| 1 pc. Power Adapter |
| 1 pc. O-Ring |
| 1 pc. User Manual |
| 1 pc. Warranty Card |

Ordering Information

| Cat. No. | Description |
|------------------|--------------------------------------|
| CRPI-412X | CAPP Rondo 4-Place Incubating Shaker |

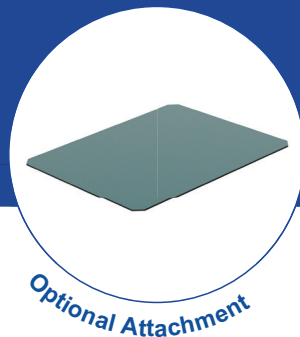
CAPP[®] Rondo

3D SHAKER

CAPP Rondo 3D Shaker operates at a variable speed range from 10 to 120 RPM. Driven by a brushless DC motor it ensures stable, quiet and maintenance-free operation, making it the right choice for applications requiring extended run sessions.

Features

- With an operational capacity of 5kg, the three-dimensional rocking and tumbling motion provides thorough homogenous mixing
- The user can save up to 9 individual protocols
- To assure total stability on the bench the shaker is equipped with non-slip rubber feet and comes with a spiked rubber mat
- Accessories - Spiked rubber mat (included), Sticky mat (optional : Cat. No. CR3-08X-0001)



Specifications

| | | | |
|-------------------------|---------------------------------------|-------------------------------|---------------------------|
| Speed | 10-120 RPM in steps of 1 RPM | Time Setting | 1-999 minutes or infinite |
| Load Capacity | 5 kg incl. attachment | Protection Class | IP 21 |
| Motor | BLDC (Brushless DC motor) | Display | Yes |
| Movement | Tumbling in fixed angle $\pm 7^\circ$ | Dimensions (W x D x H) | 392 x 268 x 197 mm |
| Plate Dimensions | 350 x 350 mm | Weight | 7kg |
| Pulse Mode | Yes, programmable | Power Consumption | 17 W |

Scope of Delivery

| |
|-------------------------|
| 1 pc. 3D Shaker |
| 1 pc. Power Adaptor |
| 1 pc. Spiked Rubber Mat |
| 1 pc. User Manual |
| 1 pc. Warranty Card |

Ordering Information

| Cat. No. | Description |
|---------------------|---------------------------------------|
| CR3-08X | CAPP Rondo 3D Shaker |
| CR3-08X-0001 | Sticky mat (to be ordered separately) |

CAPP® Rondo

MAGNETIC STIRRER

The CAPP Rondo Magnetic Stirrer is a compact, high-performance device. It features a durable stainless steel top surface that resists moderate contamination of harsh chemicals, making it suitable for a variety of lab environments.



Features

- Adjustable speed and timer
- Last run memory feature
- Pulse mode works for 30 seconds in each direction, for improved mixing
- Wear-free driven without any moving parts
- Innovative, water spill resistant design is IP 65 compliant
- Slim profile of just 16.5 mm thick
- Easy-to-use control pad with user-friendly interface
- Flat surface for ease of cleaning



Specifications

| | | | |
|------------------------------------|---------------------------|-------------------------------|---|
| Speed | 15 to 1500 RPM | Time Setting | 1 to 99 hours 59 min and infinite |
| Load Capacity | 800 mL (H ₂ O) | Pulse Function | Yes, auto direction change, with time interval of 30 sec. |
| Plate Material | Stainless Steel | Dimensions (W x D x H) | 124 x 191 x 16.5 mm |
| Plate Diameter | 94 mm | Weight | 500g |
| Recommended Stir Bar Length | 25 mm | Power Consumption | 5 W |
| Digital Display | Yes | | |

Scope of Delivery

| |
|-----------------------------|
| 1 pc. Magnetic Stirrer |
| 1 pc. Inbuilt Power Adapter |
| 1 pc. Stirring Bar |
| 1 pc. User Manual |
| 1 pc. Warranty Card |

Ordering Information

| Cat. No. | Description |
|----------------|--|
| CRS-15X | CAPP Rondo Magnetic Stirrer 1500 RPM w/ 1 stirring bar |

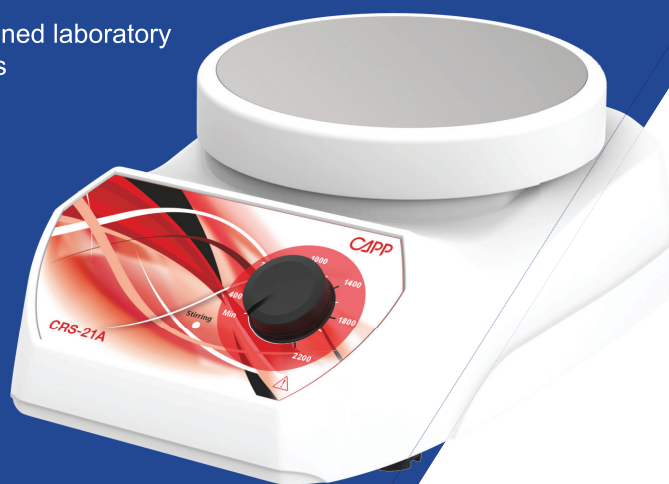
Important note – To maximise the performance of your CAPP Rondo Magnetic Stirrer, we recommend that you use our original Teflon coated, 25 mm high strength stirring bar. One unit is supplied with each instrument.

ANALOGUE MAGNETIC STIRRER

The CAPP Rondo Magnetic Stirrer a compact liquid mixing device designed for excellent stirring of liquids of various viscosities. The space efficient design allows for a broad scope of usage environments ranging from normal workbenches to laminar-flow cabinets, hoods, and cold rooms.

Features

- Compact magnetic stirrer with a large volume capacity (up to 10L)
- Portable mixer that can be easily moved around the laboratory
- Intuitive single-knob operation provides plug-and-play setup for maximum efficiency and minimum set up
- Space-efficient dimensions are tailored for confined laboratory spaces such as hoods, cabinets and cold rooms



Specifications

| | | | |
|-----------------------|---------------------------------|-------------------------------|----------------------|
| Speed | 400 – 2200 RPM | Protection class | IP 42 |
| Load Capacity | 10L (H ₂ O) | Time Setting | Continuous operation |
| Motor Type | DC Motor | Dimensions (W x D x H) | 248 x 156 x 92 mm |
| Plate Material | Plastic Integrated SS Top Plate | Weight | 1.5kg |
| Plate Diameter | 135 mm | Power Consumption | 15W |

Scope of Delivery

| |
|---------------------------------|
| 1 pc. Analogue Magnetic Stirrer |
| 1 pc. Stirring Bar |
| 1 pc. User Manual |
| 1 pc. Warranty Card |

Ordering Information

| Cat. No. | Description |
|----------------|--------------------------------------|
| CRS-21A | CAPP Rondo Analogue Magnetic Stirrer |

MAGNETIC HOTPLATE STIRRER

The CAPP Rondo Magnetic Hotplate Stirrer has a load capacity of 10 litres and comes with a ceramic-coated stainless steel plate and a powerful motor, enabling it to deliver constant speed even under varying load conditions.

Features

- Microprocessor-controlled, ensuring precise, stable and reliable operation for consistent performance
- To increase user comfort, the CAPP Rondo Magnetic Hotplate Stirrer is equipped with a large display that clearly presents all critical parameters, ensuring easy visibility and seamless operation
- This stirrer has an ultra-compact design, making it an excellent space-saving solution for your laboratory bench without compromising functionality
- Keypad lock to prevent accidental changes of parameters
- Accessories included - CRS-21H-P (temperature probe) and CRS-21H-S (stand)



Specifications

| | | | |
|--------------------------|--|-------------------------------|---------------------------|
| Speed | 200 - 2200 RPM, in steps of 10 RPM | Time Setting | 1-999 mins and continuous |
| Load Capacity | 10L (H ₂ O) | Pulse Mode | Yes |
| Motor Type | DC | Digital Display | Yes |
| Plate Material | Stainless steel top with ceramic coating | Dimensions (W x D x H) | 156 x 248 x 104 mm |
| Plate Diameter | 140 mm | Weight | 2.0kg |
| Temperature Range | from Ambient to 320°C | Power Consumption | 620 W |
| Protection Class | IP 21 | | |

Scope of Delivery

| |
|---------------------------------|
| 1 pc. Magnetic Hotplate Stirrer |
| 1 pc. Temperature Probe |
| 1 pc. Probe Attachment Stand |
| 1 pc. Power Cord |
| 1 pc. Stirring Bar |
| 1 pc. User Manual |
| 1 pc. Warranty Card |

Ordering Information

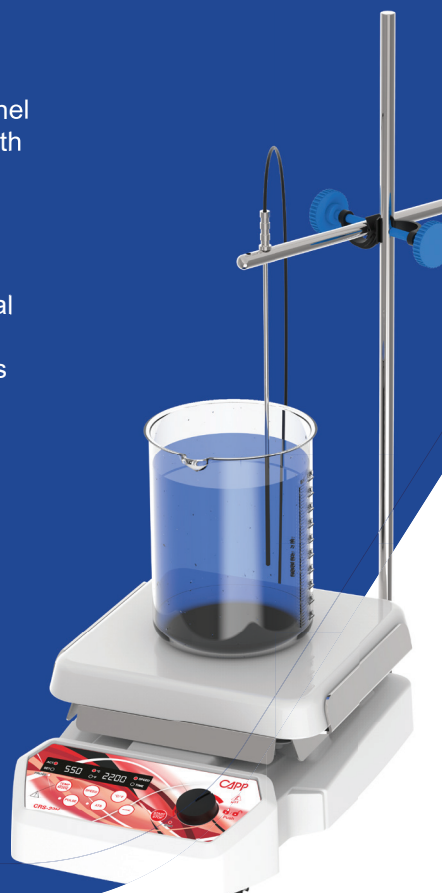
| Cat. No. | Description |
|----------------|--|
| CRS-21H | CAPP Rondo Magnetic Hotplate Stirrer 2200 RPM, 320°C ceramic, 220V |

HOTPLATE STIRRER

The CAPP Rondo Hotplate Stirrer is packed with a ton of useful improvements designed to make scientists more productive and efficient in their liquid handling protocols.

Features

- Equipped with an intuitive microprocessor-driven control panel consisting of a large digital display, touch buttons and smooth rotational dial
- Heating plate with long-lasting and chemical-resistant nano-crystalline glass ceramic coating provides a constant heat transfer
- 3 intelligent heating modes facilitate regulation of the thermal conditions of each run
- Powerful motor ensures constant speed with changing loads
- Highly resistant and solid body, can even withstand strong chemicals
- Functions - last run memory / programmable puls mode
- Small footprint to save valuable bench space
- Keypad lock to prevent accidental changes of parameters
- Accessories included - CRS-21H-P(temperature probe) and CRS-21H-S(stand)



Specifications

| | | | |
|------------------------------------|------------------------------|------------------------------------|---|
| Speed | 200-2200 RPM in 10 RPM steps | Pulse Mode | Yes, programmable with run-pause-run function |
| Load Capacity | 20L | Recommended Stir Bar Length | 25 mm |
| Heating Temperature Range | Ambient to 550°C (±1°C) | Protection Class | IP 21 |
| Safety Temperature Limit | 575°C | Dimensions (W x D x H) | 330 x 225 x 113 mm |
| Plate Material | Ceramic | Weight | 4.9kg |
| Plate Dimensions | 180 x 180 mm | Power Consumption | 1000 W |
| Over-temperature Protection | Yes | | |
| Time Setting | 1 to 999 min and infinite | | |

Scope of Delivery

| |
|------------------------------|
| 1 pc. Hotplate Stirrer |
| 1 pc. Temperature Probe |
| 1 pc. Probe Attachment Stand |
| 1 pc. Power Cord |
| 1 pc. Stirring Bar |
| 1 pc. User Manual |
| 1 pc. Warranty Card |

Ordering Information

| Cat. No. | Description |
|----------------|---|
| CRS-22H | CAPP Rondo Hotplate Stirrer 2200 RPM, 550°C ceramic, 220V |

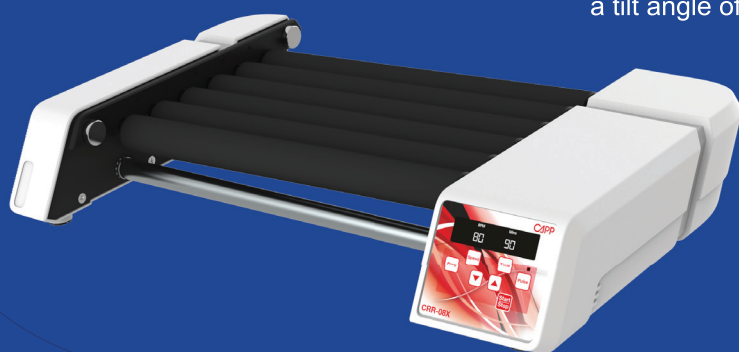
TUBE ROLLER

CAPP Rondo Tube Roller ensures efficient mixing of blood samples, viscous substances and liquid-solid suspensions. The programmable pulse mode feature with Run-Pause-Run motion and variable time setting from 30 to 99 seconds, gives the user additional flexibility and improves the mixing process.

Features



- With a focus on increased user comfort and minimising the risk of contamination, CAPP Rondo Tube Roller has easily removable and autoclavable rollers
- Compact footprint will optimise your bench space
- CAPP Rondo Tube Roller is also suitable for use in incubators in temperatures up to 40°C and humidity up to 80%
- Adjustable roller spacing to accommodate different tube diameters
- Allows the user to set up to 9 user-defined programs for optimised user comfort
- Circular movement for gentle mixing with a tilt angle of 3 degrees



Specifications

| | | | |
|------------------------|---------------------------------|-------------------------------|---|
| Speed | 10 to 80 RPM, in steps of 1 RPM | Removable Rollers | Yes |
| Speed Accuracy | ± 5 RPM | Tilt Angle | +/-3° |
| Motor | Brushless DC motor | Protection Class | IP21 |
| Motion | Rocking and rolling | Pulse Mode | Yes, programmable with run-pause-run function |
| Load Capacity | 2kg | Dimensions (W x D x H) | 505 x 293 x 90 mm |
| Number Of Tubes | Up to 15 x 7mL blood tubes | Weight | 5.5kg |
| Time Setting | 1 to 99 mins and infinite | Power Consumption | 6 W |
| Operation Type | Continuous and timed operation | | |

Scope of Delivery

| |
|---------------------|
| 1 pc. Tube Roller |
| 1 pc. Power Adaptor |
| 1 pc. User Manual |
| 1 pc. Warranty Card |

Ordering Information

| Cat. No. | Description |
|----------------|-------------------------------|
| CRR-08X | CAPP Rondo Tube Roller 80 RPM |

DISC TUBE ROTATOR

The advanced CAPP Rondo Disc Tube Rotator is designed for optimal performance, drawing on extensive research and valuable user feedback. Equipped with a maintenance-free BLDC motor, this rotator delivers quiet, efficient, and reliable operation.



Features

- Microprocessor-controlled, offering intelligent performance that includes a convenient last run memory feature for added ease of use
- Allows up to 9 user-defined programs for optimised user comfort
- A digital display is included for convenient and easy-to read monitoring of all operational parameters, enhancing usability
- The rotator's angle can be adjusted from 0° to 90°, to accommodate a wide range of experimental preferences



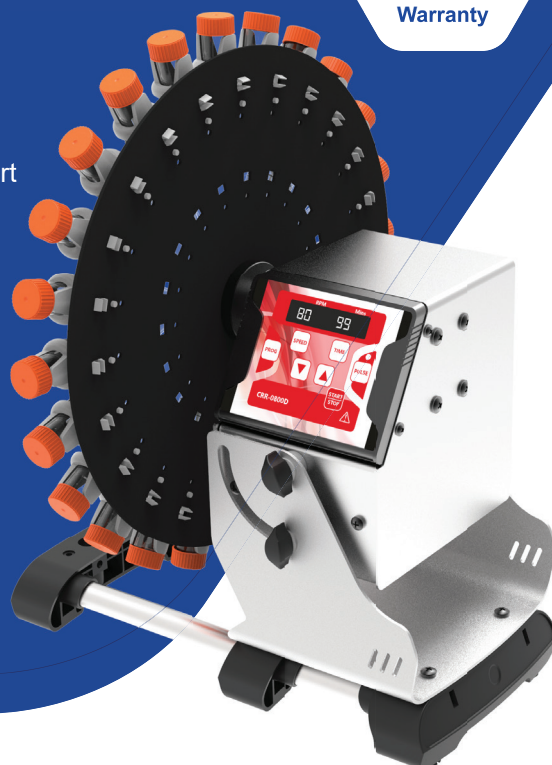
2 mL



15 mL



50 mL



Specifications

| | | | |
|---|---|-------------------------------|--|
| Speed | 10-80 RPM, in steps of 1 RPM | Protection class | IP 21 |
| Speed Accuracy | ± 1 RPM | Digital Display | Yes |
| Motor | BLDC motor | Dimensions (W x D x H) | 395 x 336 x 326 mm |
| Load Capacity | Up to 2kg | Weight | 4.5 kg |
| Capacity (supplied with one chosen disc plate) | 12 tubes x 50 mL 24 tubes x 15 mL 44 tubes x 2 mL | Pulse Mode | Yes, clockwise and anticlockwise motion with 2 sec stops |
| Time Setting | 1-99 mins and infinite | Power Consumption | 4.5 W |

Scope of Delivery

| |
|-------------------------|
| 1 pc. Disc Tube Rotator |
| 1 pc. Power Adaptor |
| 1 pc. User Manual |
| 1 pc. Warranty Card |

Ordering Information

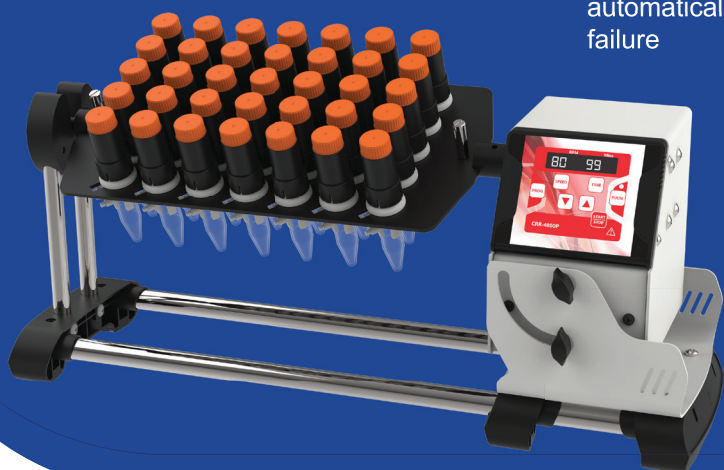
| Cat. No. | Description |
|-----------------------|---|
| CRR-0800D | CAPP Rondo Disc Tube Rotator (Order plate rotator separately) |
| CRR-0800D-D50 | 50 mL disc plate with tube holder |
| CRR-0800D-D15 | 15 mL disc plate with tube holder |
| CRR-0800D-D05 | 2 mL / 5 mL disc plate with tube holder |
| CRR-0800D-TH50 | 50 mL tube holder |
| CRR-0800D-TH15 | 15 mL tube holder |
| CRR-0800D-TH05 | 2 mL / 5 mL tube holder |
| CRR-0800D-FN | Front Nut |
| CRR-0800D-PA | Power Adaptor |

PLATE TUBE ROTATOR

The CAPP Rondo Plate Tube Rotator delivers exceptional performance, ensuring both convenience and reliability. Equipped with a brushless DC motor that operates quietly, it requires no maintenance, and is really built to last.

Features

- With its microprocessor control, the CAPP Rondo Plate Tube Rotator allows for variable speed settings
- Users can programme and save up to 9 customised programs for efficient operation
- Supports three plate options, accommodating 16 tubes of 50 mL, 35 tubes of 15 mL, or 55 tubes of 2 mL, providing versatility for various applications
- The auto power-on feature which ensures that the rotator automatically resumes and completes the run after a power failure



Specifications

| | | | |
|---|---|-------------------------------|--|
| Speed | 10-80 RPM, in steps of 1 RPM | Angle of Disc Plate | Adjustable from 0-90 degrees |
| Speed Accuracy | ± 1 RPM | Digital Display | Yes |
| Motor | BLDC motor | Dimensions (W x D x H) | 540 x 274 x 186 mm |
| Load Capacity | 1.5kg | Weight | 4.5 kg |
| Capacity (supplied with any one chosen disc plate) | 16 tubes x 50 mL 35 tubes x 15 mL 55 tubes x 2 mL | Pulse Mode | Yes, clockwise and anticlockwise motion with 2 sec stops |
| Time Setting | 1-99 mins and infinite | Power Consumption | 4.5 W |
| Protection class | IP 21 | | |

Scope of Delivery

| |
|--------------------------|
| 1 pc. Plate Tube Rotator |
| 1 pc. Power Adaptor |
| 1 pc. User Manual |
| 1 pc. Warranty Card |

Ordering Information

| Cat. No. | Description |
|----------------------|---|
| CRR-0800P | CAPP Rondo Plate Tube Rotator 80 RPM (plate rotator must be ordered separately) |
| CRR-0800P-P50 | 50 mL plate rotator (with clamps) |
| CRR-0800P-P15 | 15 mL plate rotator (with clamps) |
| CRR-0800P-P02 | 2 mL plate rotator (with clamps) |
| CRR-0800P-C50 | 50 mL clamp |
| CRR-0800P-C15 | 15 mL clamp |
| CRR-0800P-C02 | 2 mL clamp |
| CRR-0800P-FN | Front nut |
| CRR-0800P-PA | Power adaptor |

MICROPLATE WASHER

Whether you work in a research or clinical laboratory, the compact CAPPWash Microplate Washer is the ideal washing tool for small scale immuno assays. Fitting into even the tightest budget, it is the perfect alternative to dependence on department washers for washing microplates and strips.

Features

- Performs uniformly and efficiently every time
- Washing is simple – lower the tubes into the well, push the knob to fill and release the knob to empty. Repeat for desired number of washings and move on to the next row
- Matches all well types – the washer can be set to the desired depth by simply adjusting the two finger screws found on either side of the tubes
- CAPP Wash is available in 8-channel, 12-channel and 16-channel models
- Produced from high-grade stainless steel and polypropylene, the washer is fully autoclavable as well as highly resistant to aggressive chemicals
- Unique two-in-one design whereby each tube consists of an inner tube that releases the distilled water washing solution into the wells for rinsing, while the outer tube vacuums away the liquid upon completion of the washing procedure
- The vacuum pump is available for 115V and 230V connections
- No programming required
- No electrical wiring connection



Ordering Information

| Cat. No. | Description |
|----------|---|
| W-8 | CAPP Wash 8-channel |
| W-12 | CAPP Wash 12-channel |
| W-16 | CAPP Wash 16-channel |
| WP-115V | Vacuum pump 115V |
| WP-230V | Vacuum pump 230V |
| WB-1 | Bottle for washing solution |
| WB-3 | Waste collection bottle |
| WB-4 | Vacuum trap |
| WB-1000 | Silicon Tubing (1 metre). Recommended to order 3 metres |

COMPATIBILITY CHART

| Description | Cat. No. | CAPP | | Gilson | | Eppendorf | | Brand | | Thermo | | | |
|--|----------|----------------|---------------|----------------|---------------|--|-----------------------------------|--------------------------------|-----------------------------------|-----------------------|----------------------|---------------------------|--------------------------|
| | | single channel | multi channel | single channel | multi channel | Research Plus/ Reference Z/ Xplorer / X Plus | single and multi channel pipettes | Transferpette, Transferpette S | single and multi channel pipettes | manual single channel | manual multi channel | electronic single channel | electronic multi channel |
| CAPP EXPellPlus Low Retention Pipette Tips | | | | | | | | | | | | | |
| EXPellPlus 10 µL, clear | 5030010C | ■ | ■ | ■ | ■ | ■ | ■ | ■ | ■ | ■ | ■ | ■ | ■ |
| EXPellPlus 10/20 µL, extra narrow, clear | 5030041C | ■ | ■ | ■ | ■ | ■ | ■ | ■ | ■ | ■ | ■ | ■ | ■ |
| EXPellPlus 200 µL, clear | 5030070C | ■ | ■ | ■ | ■ | ■ | ■ | ■ | ■ | ■ | ■ | ■ | ■ |
| EXPellPlus 1000 µL, clear | 5030130C | ■ | ■ | ■ | ■ | ■ | ■ | ■ | ■ | ■ | ■ | ■ | ■ |
| CAPP EXPellPlus Low Retention Filter-Tips | | | | | | | | | | | | | |
| EXPellPlus 10 µL, w/ filter, clear, sterile | 5030030C | ■ | ■ | ■ | ■ | ■ | ■ | ■ | ■ | ■ | ■ | ■ | ■ |
| EXPell 10/20 µL, w/ filter, extra narrow, clear, sterile | 5030061C | ■ | ■ | ■ | ■ | ■ | ■ | ■ | ■ | ■ | ■ | ■ | ■ |
| EXPellPlus 20 µL, w/ filter, clear, sterile | 5030062C | ■ | ■ | ■ | ■ | ■ | ■ | ■ | ■ | ■ | ■ | ■ | ■ |
| EXPellPlus 100 µL, w/ filter, clear, sterile | 5030066C | ■ | ■ | ■ | ■ | ■ | ■ | ■ | ■ | ■ | ■ | ■ | ■ |
| EXPellPlus 200 µL, w/ filter, clear, sterile | 5030090C | ■ | ■ | ■ | ■ | ■ | ■ | ■ | ■ | ■ | ■ | ■ | ■ |
| EXPellPlus 300 µL, w/ filter, clear, sterile | 5030115C | ■ | ■ | ■ | ■ | ■ | ■ | ■ | ■ | ■ | ■ | ■ | ■ |
| EXPellPlus 1000 µL, w/ filter, clear, sterile | 5030150C | ■ | ■ | ■ | ■ | ■ | ■ | ■ | ■ | ■ | ■ | ■ | ■ |
| EXPellPlus 1250 µL, w/ filter, clear, sterile | 5030123C | ■ | ■ | ■ | ■ | ■ | ■ | ■ | ■ | ■ | ■ | ■ | ■ |
| CAPP EXPell Pipette Tips | | | | | | | | | | | | | |
| EXPell 10 µL, clear | 5030015C | ■ | ■ | ■ | ■ | ■ | ■ | ■ | ■ | ■ | ■ | ■ | ■ |
| EXPell 10 µL, clear, sterile | 5030016C | ■ | ■ | ■ | ■ | ■ | ■ | ■ | ■ | ■ | ■ | ■ | ■ |
| EXPell 10 µL, clear | 5130010C | ■ | ■ | ■ | ■ | ■ | ■ | ■ | ■ | ■ | ■ | ■ | ■ |
| EXPell 10/20 µL, extra narrow, clear | 5030046C | ■ | ■ | ■ | ■ | ■ | ■ | ■ | ■ | ■ | ■ | ■ | ■ |
| EXPell 10/20 µL, extra narrow, sterile | 5030047C | ■ | ■ | ■ | ■ | ■ | ■ | ■ | ■ | ■ | ■ | ■ | ■ |
| EXPell 10/20 µL, extra narrow, clear | 5130041C | ■ | ■ | ■ | ■ | ■ | ■ | ■ | ■ | ■ | ■ | ■ | ■ |
| EXPell 200 µL, clear | 5030075C | ■ | ■ | ■ | ■ | ■ | ■ | ■ | ■ | ■ | ■ | ■ | ■ |
| EXPell 200 µL, clear | 5130070C | ■ | ■ | ■ | ■ | ■ | ■ | ■ | ■ | ■ | ■ | ■ | ■ |
| EXPell 200 µL, clear, sterile | 5030076C | ■ | ■ | ■ | ■ | ■ | ■ | ■ | ■ | ■ | ■ | ■ | ■ |
| EXPell 200 µL, yellow | 4130075C | ■ | ■ | ■ | ■ | ■ | ■ | ■ | ■ | ■ | ■ | ■ | ■ |
| EXPell 300 µL, clear | 5130105C | ■ | ■ | ■ | ■ | ■ | ■ | ■ | ■ | ■ | ■ | ■ | ■ |
| EXPell 300 µL, clear | 5130100C | ■ | ■ | ■ | ■ | ■ | ■ | ■ | ■ | ■ | ■ | ■ | ■ |
| EXPell 1000 µL, clear | 5130135C | ■ | ■ | ■ | ■ | ■ | ■ | ■ | ■ | ■ | ■ | ■ | ■ |
| EXPell 1000 µL, clear | 5130130C | ■ | ■ | ■ | ■ | ■ | ■ | ■ | ■ | ■ | ■ | ■ | ■ |
| EXPell 1000 µL, blue | 4130135C | ■ | ■ | ■ | ■ | ■ | ■ | ■ | ■ | ■ | ■ | ■ | ■ |
| EXPell 1000 µL, clear, sterile | 5130140C | ■ | ■ | ■ | ■ | ■ | ■ | ■ | ■ | ■ | ■ | ■ | ■ |
| EXPell 1250 µL, clear | 5130121C | ■ | ■ | ■ | ■ | ■ | ■ | ■ | ■ | ■ | ■ | ■ | ■ |
| EXPell 1250 µL, clear | 5130120C | ■ | ■ | ■ | ■ | ■ | ■ | ■ | ■ | ■ | ■ | ■ | ■ |
| EXPell 1250 µL, clear, sterile | 5130122C | ■ | ■ | ■ | ■ | ■ | ■ | ■ | ■ | ■ | ■ | ■ | ■ |
| EXPell 5000 µL, clear | 5130160C | ■ | ■ | ■ | ■ | ■ | ■ | ■ | ■ | ■ | ■ | ■ | ■ |
| EXPell 5000 µL, clear | 5130161C | ■ | ■ | ■ | ■ | ■ | ■ | ■ | ■ | ■ | ■ | ■ | ■ |
| EXPell 10000 µL, clear | 5130190C | ■ | ■ | ■ | ■ | ■ | ■ | ■ | ■ | ■ | ■ | ■ | ■ |
| EXPell 10000 µL, clear | 5130191C | ■ | ■ | ■ | ■ | ■ | ■ | ■ | ■ | ■ | ■ | ■ | ■ |

■ compatible
 X not compatible

The compatibility chart above is for your reference. We are not responsible for technical modifications or changes made to the mentioned pipettes. Specifications like inaccuracy and imprecision values have not been checked.

Updated as on Oct 2025. For latest compatibility chart scan here



CAPP[®]

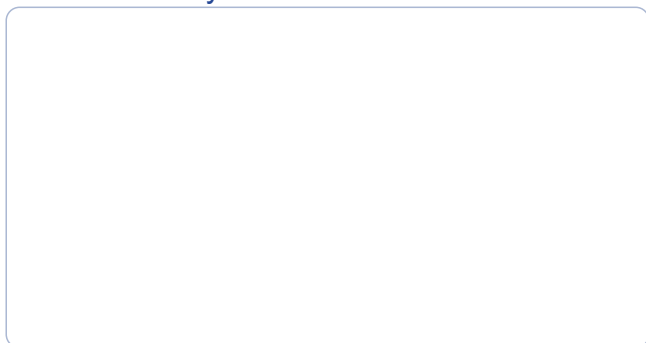
AHN Biotechnologie GmbH

Uthleber Weg 14
99734 Nordhausen
GERMANY

P: +49 (0) 3631 65242-0
F: +49 (0) 3631 65242-90
E: contact@ahn-bio.com

www.ahn-bio.com

Distributed by



www.ahn-bio.com

2602